

STYLISH ONE-DOUBLE BEDROOM TOP (SECOND) FLOOR CONVERTED APARTMENT in an Edwardian conversion located just a few minutes walk to Alexandra Palace National Rail and Wood Green tube stations(20/25 Mins City/West End) with local shops and parks nearby. The bright and secure double-glazed accommodation comprises entry-phone access, stairs leading up to the top floor, own front door, internal hallway, large 20' approx. open-plan fitted kitchen/living area, double bedroom with en-suite shower room/WC. walking distance from the attractive green surroundings of Alexandra Park & Palace.

**** SHARE OF FREEHOLD & CHAIN FREE ****

Park Avenue, Alexandra Park, London, N22 7HA

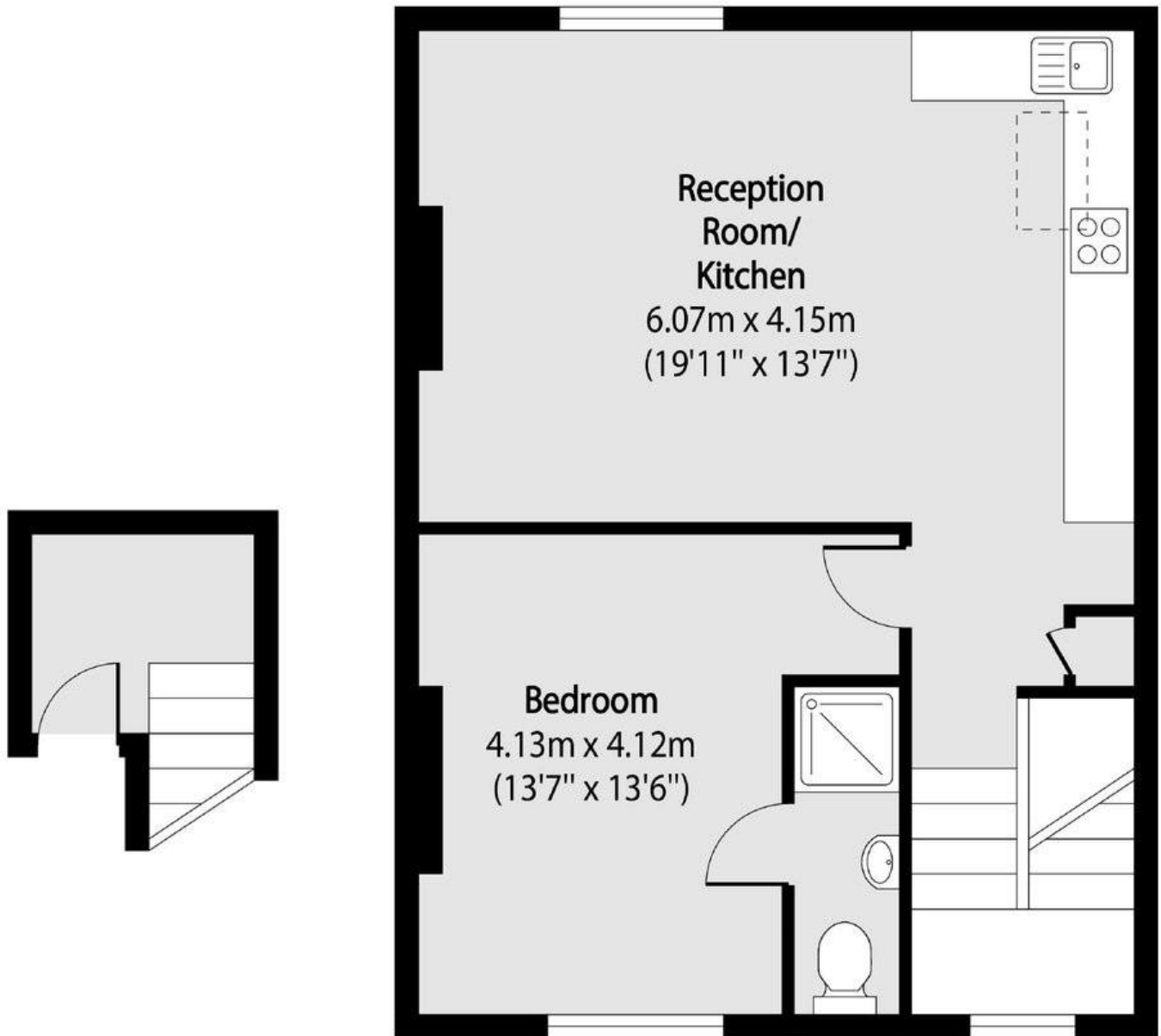
Reduced to sell £350,000 | Share of Freehold

HOBARTS ESTATE AGENTS - LONDON (North)
8 CRESCENT ROAD
Alexandra Park
LONDON N22 7RS

sales@hobartsproperty.co.uk
www.hobartsproperty.co.uk
0208 348 3333



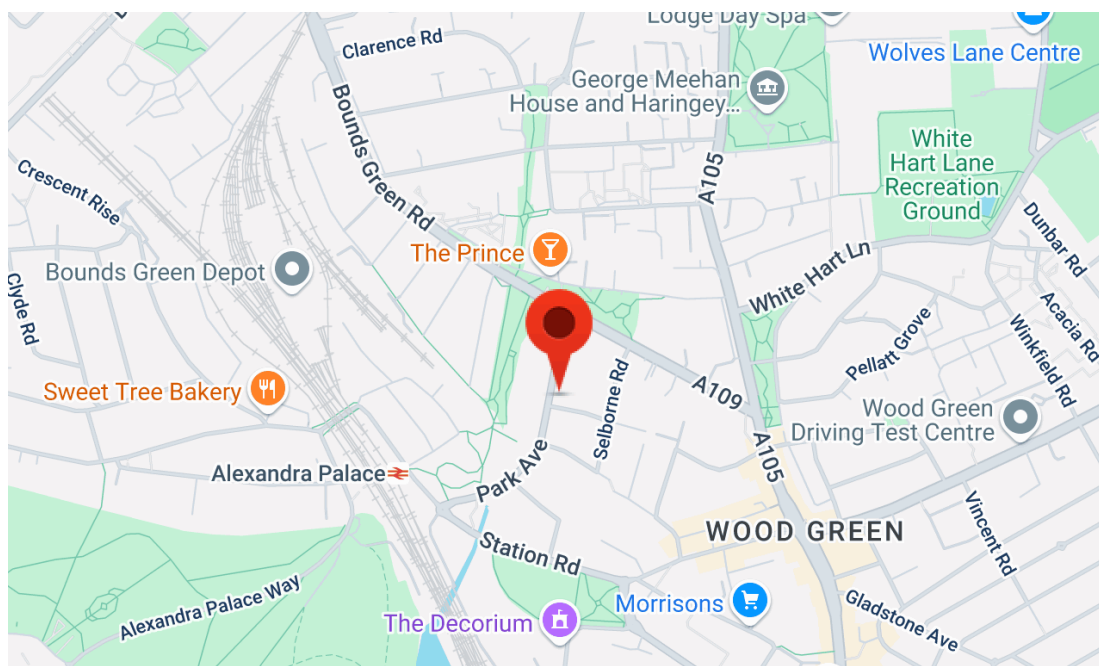
- Entry-Phone Access
- Close to Tube/National Rail
- Stylish 20' Open-Plan Kitchen/Living Area
- En-Suite Shower Room/WC
- Close to All Amenities
- One-Double Bedroom
- Upper Floor security
- 20/25 Mins City/West End
- Close to Alexandra Park & Palace



Second Floor
Entrance

Third Floor

Total area (approx): 55.10 sq m (593 sq. ft)



Energy Efficiency Rating		Current	Potential
Very energy efficient - lower running costs			
(92+)	A		
(81-91)	B		
(69-80)	C		
(55-68)	D		
(39-54)	E	45	50
(21-38)	F		
(1-20)	G		
Not energy efficient - higher running costs			
England, Scotland & Wales			
EU Directive 2002/91/EC			

Address: Park Avenue, Alexandra Park, N22 7HA

Tenure:
Share of Freehold

Viewings:
Strictly by appointment via
HOBARTS ESTATE AGENTS
0208 348 3333

Contact:
8 CRESCENT ROAD, Alexandra
Park, LONDON N22 7RS

sales@hobartsproperty.co.uk
www.hobartsproperty.co.uk

rightmove

PrimeLocation.com

homes24.co.uk

Zoopla.co.uk

propertyfinder.com



These property details, including measurements, floor plans and items depicted in photographs etc. are intended only as a brief guide to prospective purchasers and are not intended to be relied upon for any purpose whatsoever. Any interested party should satisfy themselves by inspection or otherwise as to the correctness of each statement contained in these details.