



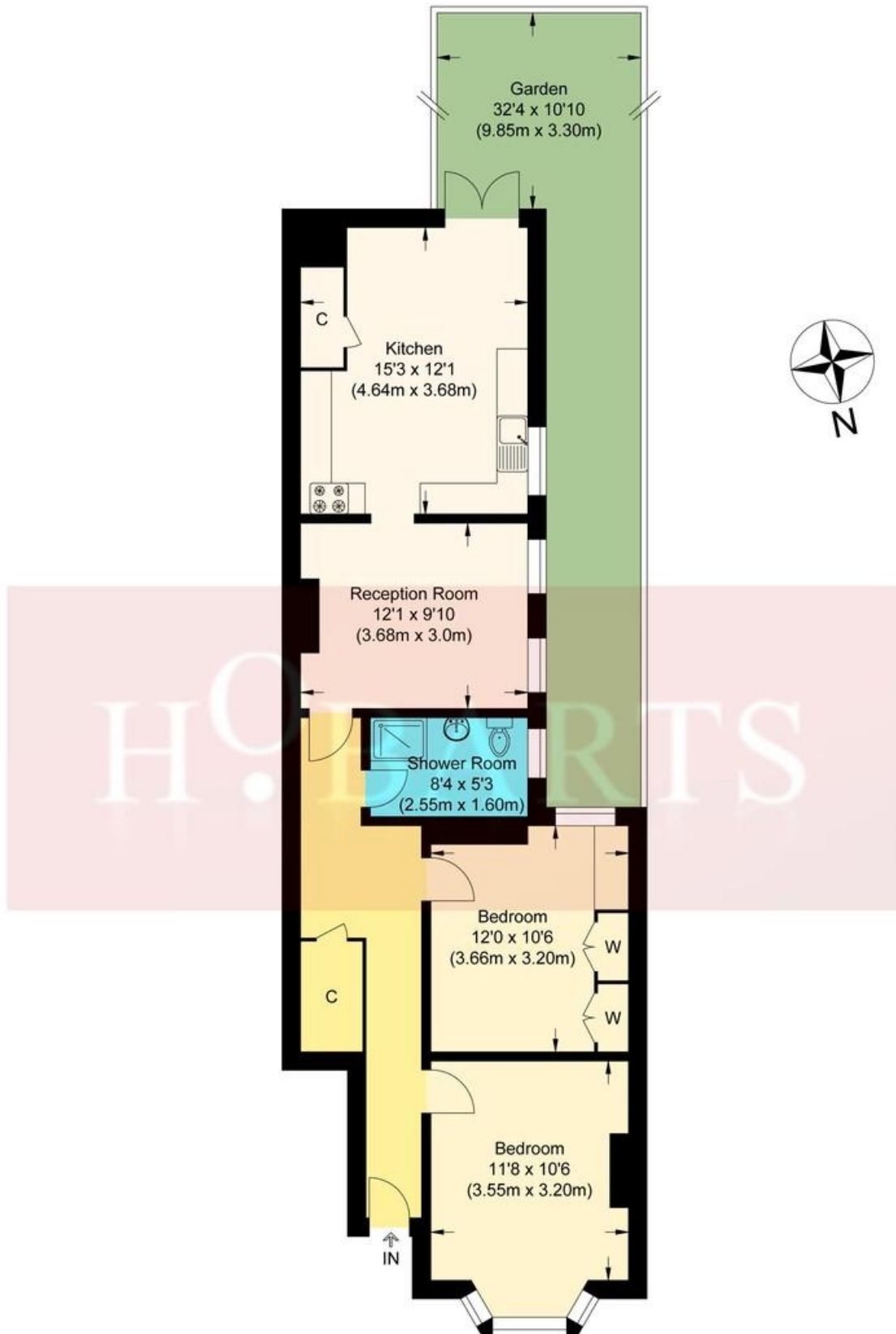
- Ground Floor Maisonette
- Two Double Bedroom
- Private Rear Garden
- Spacious Modern Kitchen
- Gas Central Heating

Two double bedroom ground floor maisonette with private rear garden, the property benefits from a spacious fitted kitchen, modern bathroom with a walk in shower, wooden flooring, gas central heating, and situated close to green lanes and its array of shops and restaurants.

**Lyndhurst Road, London, N22 5AT**

**£1,900 pcm**

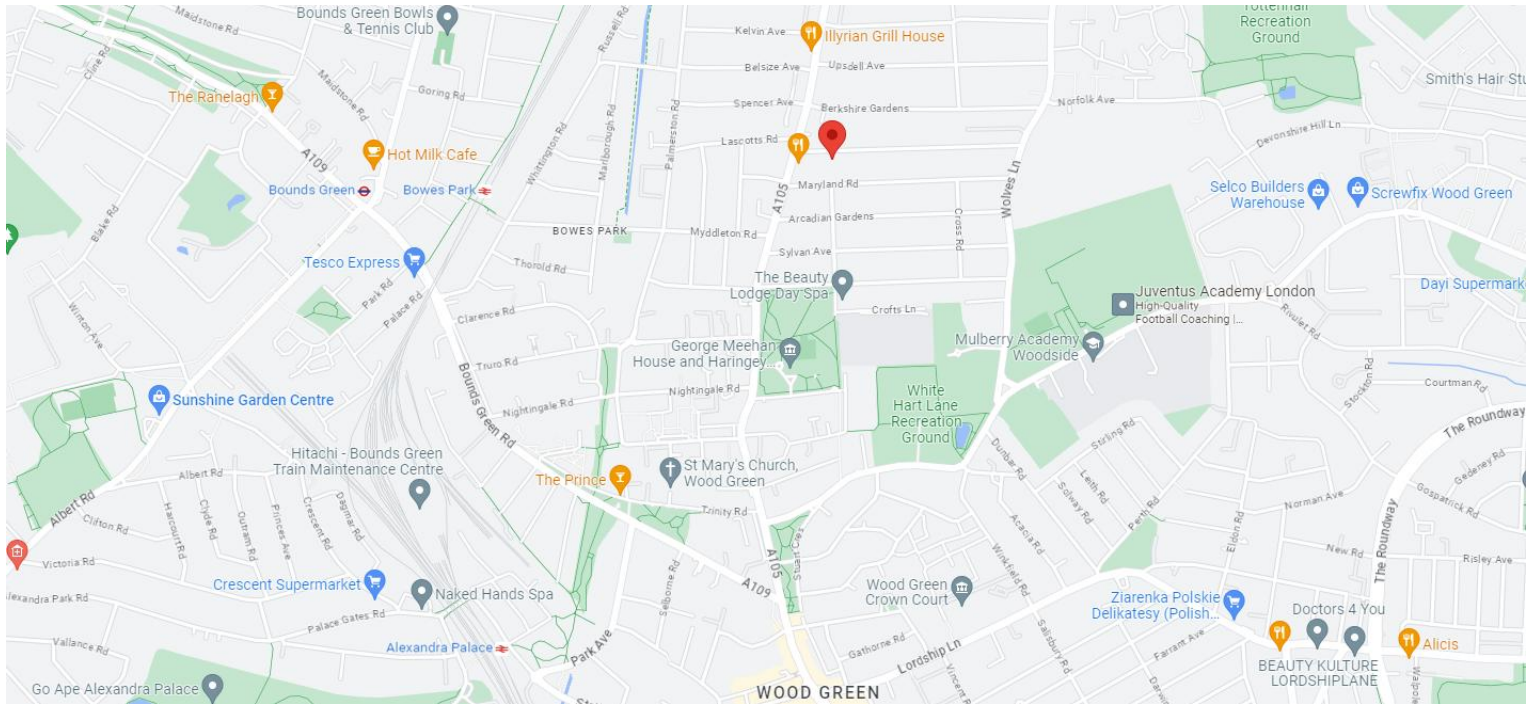
HOBARTS ESTATE AGENTS  
3 Crescent Road, Alexandra Park, London, N22 7RP  
rent@hobartsproperty.co.uk  
www.hobarts.co.uk  
0208 889 4322



## Lyndhurst Road, N22

Approximate Gross Internal Floor Area : 70.70 sq m / 761.0 sq ft

Illustration for identification purposes only, measurements are approximate, not to scale.



Score	Energy rating	Current	Potential
92+	<b>A</b>		
81-91	<b>B</b>		
69-80	<b>C</b>		<b>80 C</b>
55-68	<b>D</b>	<b>67 D</b>	
39-54	<b>E</b>		
21-38	<b>F</b>		
1-20	<b>G</b>		

**Local Authority:**  
Haringey London Borough Council

**Council Tax Band:**  
Band C

**Viewings:**  
Strictly by appointment via  
HOBARTS ESTATE AGENTS

**Contact:**  
3 Crescent Road  
Alexandra Park  
N22 7RP

0208 889 4322  
rent@hobartsproperty.co.uk  
www.hobarts.co.uk



These property details, including measurements, floor plans and items depicted in photographs etc. are intended only as a brief guide to prospective purchasers and are not intended to be relied upon for any purpose whatsoever. Any interested party should satisfy themselves by inspection or otherwise as to the correctness of each statement contained in these details.