



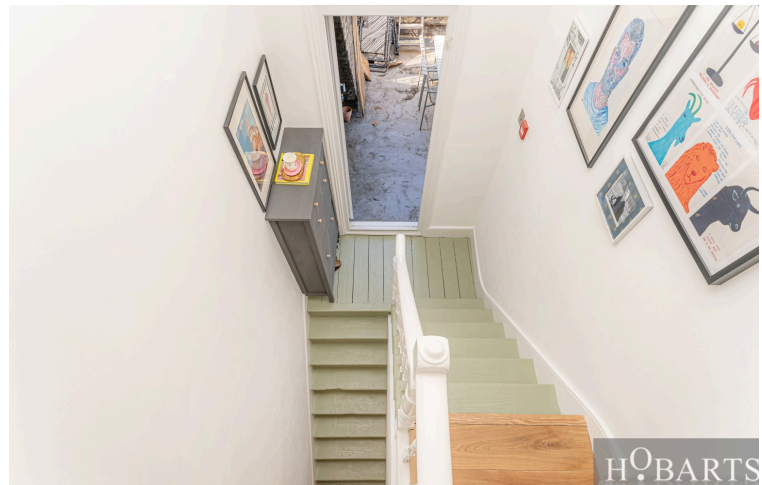
Huddleston Road, London, N7

Asking Price £550,000

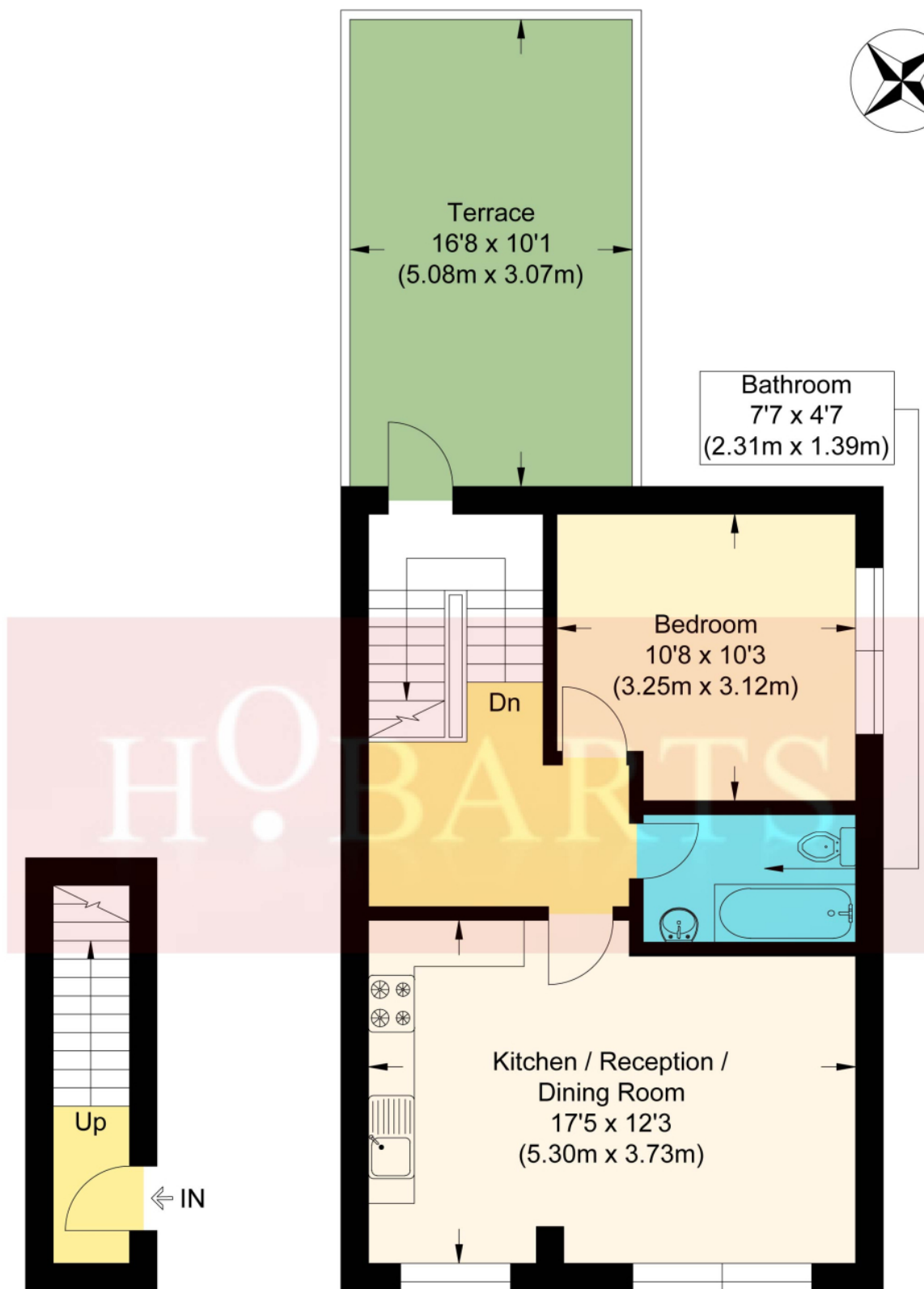
This charming second/top-floor apartment is situated on a sought-after, tree-lined road in the vibrant area of Tufnell Park. Ideally located within walking distance of Tufnell Park Underground Station (Northern Line) and the diverse range of restaurants, cafés, and bars on Fortress Road, it combines convenience with a vibrant local environment.

The property features a spacious double bedroom, an open-plan reception and kitchen area, and a contemporary bathroom. Additional highlights include a share of freehold and a generous roof terrace.

Hobarts Estate Agents
23 Ferme Park Road, Stroud Green, London, N4 4DS
stroudgreen@hobarts.co.uk
www.hobartsproperty.co.uk
442083429000



- Spacious Roof Terrace
- Modern Bathroom
- Near Tufnell Park underground station
- Share of freehold
- Open plan reception/kitchen



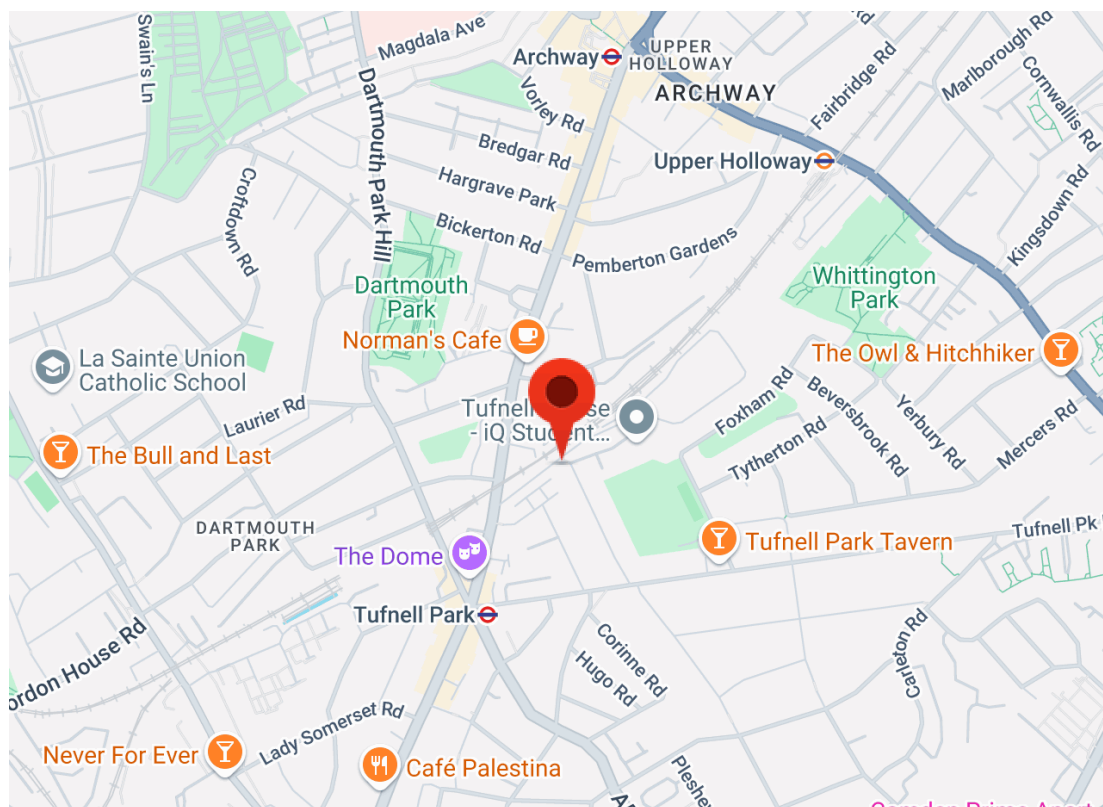
First Floor

Second Floor

Huddleston Road

Approximate Gross Internal Floor Area : 46.60 sq m / 501.59 sq ft

Illustration for identification purposes only, measurements are approximate, not to scale.



Score	Energy rating	Current	Potential
92+	A		
81-91	B		
69-80	C		76 C
55-68	D	67 D	
39-54	E		
21-38	F		
1-20	G		

Tenure:
Share of Freehold

Ground rent:

Service Charges:

Local Authority:

Viewings:

Strictly by appointment via
HOBARTS ESTATE AGENTS
442083429000

Contact:

23 Ferme Park Road, Stroud
Green, London, N4 4DS

stroudgreen@hobarts.co.uk
www.hobartsproperty.co.uk

rightmove

PrimeLocation.com

homes24.co.uk

Zoopla.co.uk

propertyfinder.com



These property details, including measurements, floor plans and items depicted in photographs etc. are intended only as a brief guide to prospective purchasers and are not intended to be relied upon for any purpose whatsoever. Any interested party should satisfy themselves by inspection or otherwise as to the correctness of each statement contained in these details.