



Ashmount Road, Whitehall Park, London, N19

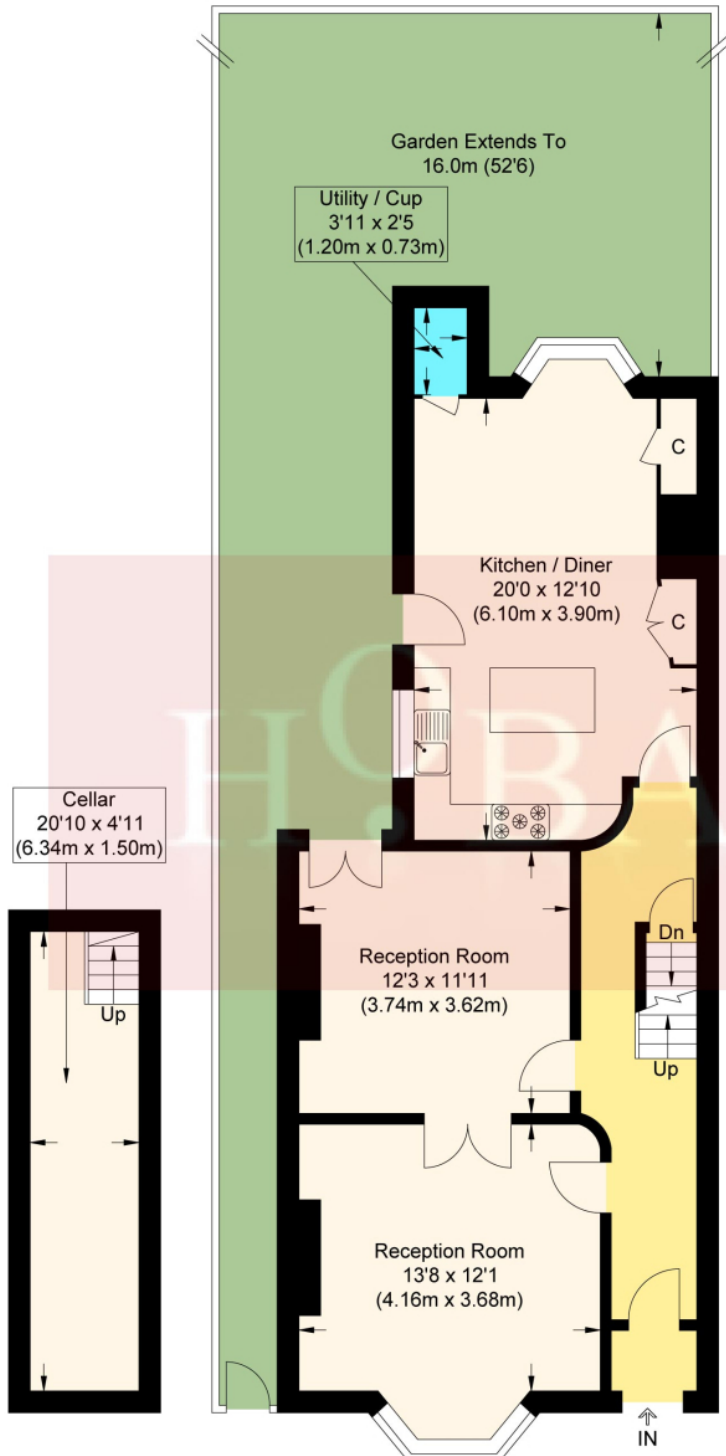
Asking Price £1,400,000

Charming five bedroom end of terrace Victorian family house in the highly sought after Whitehall Park conservation area, presenting stunning double reception rooms with original interconnecting doors, spacious kitchen diner and large family bathroom. This house offers four double bedrooms, study/fifth bedroom, two bathrooms (one ensuite) and a wealth of period features including fireplaces, ornate cornicing and exposed wood floors. Additional features making this property special are it's elevated position providing views of the city, large garden, secluded patio and scope to extend. Rarely do properties such as these appear on the open market and early viewing is imperative to avoid disappointment. Ashmount Road forms part of this popular enclave, located close to Whitehall Park primary school and is a designated 'school street'. This impressive home is well located for local transport links to the City via the Northern Line and the amenities of both Highgate Village and Crouch End Broadway. Superbly located to access the many local green spaces including Waterlow Park, The Heath and The Parkland Walk.

Hobarts Estate Agents
23 Ferme Park Road, Stroud Green, London, N4 4DS
stroudgreen@hobarts.co.uk
www.hobarts.co.uk
442083429000

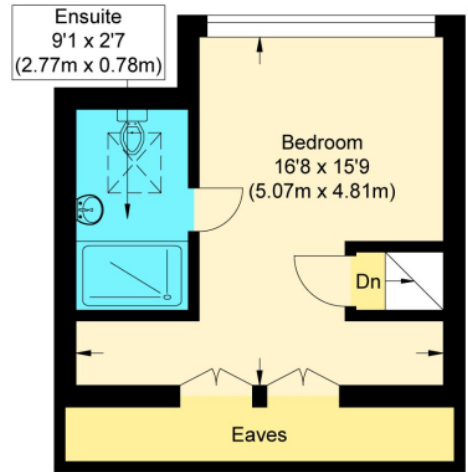


- Four double bedrooms plus study/fifth bedroom
- Large kitchen/diner
- Wealth of period features
- Large garden
- Archway Northern line 10 minutes walk
- Double reception rooms with interconnecting doors
- Family bathroom and ensuite
- End of terrace with side access
- Highgate Village and Crouch End Broadway close by
- The Parkland Walk on your doorstep

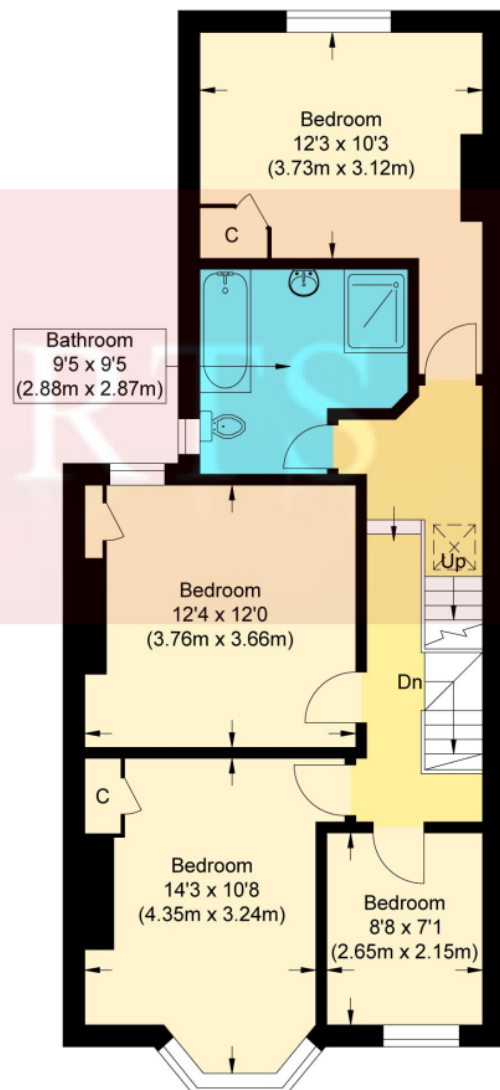


Lower Ground Floor

Ground Floor



Second Floor



First Floor

Ashmount Road

Approximate Gross Internal Floor Area With Eaves : 166.31 sq m / 1770.38 sq ft
 Approximate Gross Internal Floor Area Without Eaves : 169.67 sq m / 1809.63 sq ft
 Illustration for identification purposes only, measurements are approximate, not to scale.

**Tenure:**

Freehold

Ground rent:**Service Charges:****Local Authority:****Viewings:**

Strictly by appointment via
HOBARTS ESTATE AGENTS
442083429000

Contact:

23 Ferme Park Road, Stroud
Green, London, N4 4DS

stroudgreen@hobarts.co.uk
www.hobarts.co.uk

rightmove

PrimeLocation.com

homes24.co.uk

Zoopla.co.uk

propertyfinder.com



These property details, including measurements, floor plans and items depicted in photographs etc. are intended only as a brief guide to prospective purchasers and are not intended to be relied upon for any purpose whatsoever. Any interested party should satisfy themselves by inspection or otherwise as to the correctness of each statement contained in these details.