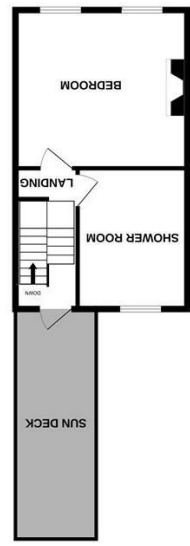
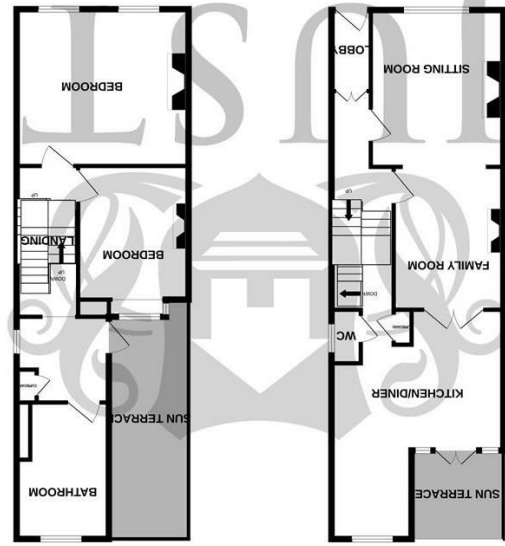


England & Wales	
EU Directive 2002/91/EC	
Very energy efficient - lower running costs	A (92 plus)
	B (81-91)
	C (69-80)
	D (55-68)
	E (39-54)
	F (21-38)
Not energy efficient - higher running costs	G (1-20)
Current	63
Potential	83



2ND FLOOR



1ST FLOOR



BASEMENT LEVEL

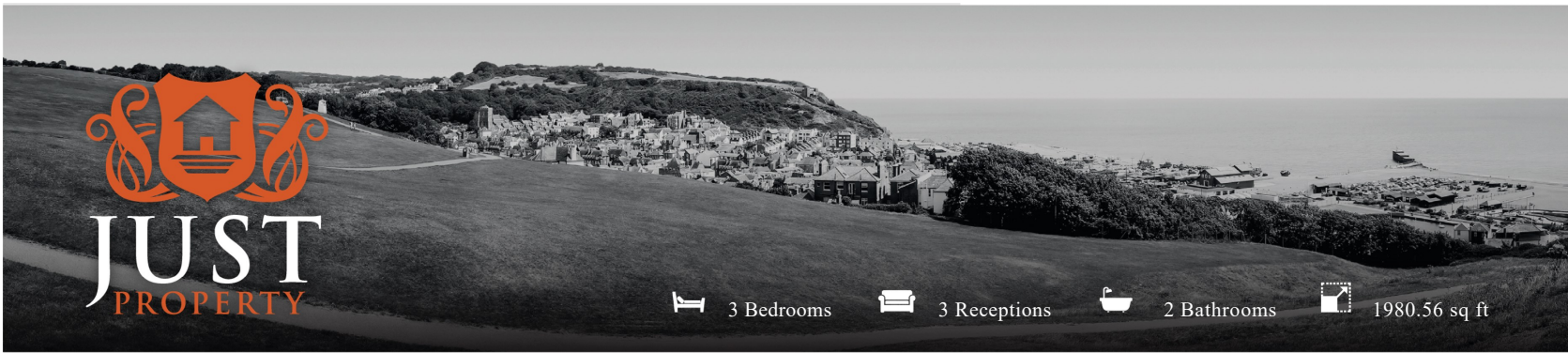
While every attempt has been made to ensure the accuracy of the floorplans contained here, measurements of doors, windows, rooms and any other items are approximate and no responsibility is taken for any errors. The service, quality and appearance shown here are taken as best as possible and no guarantee is given as to their accuracy or efficiency. This plan is for illustrative purposes only and should be used as such by any prospective purchaser. The service, quality and appearance shown here are taken as best as possible and no guarantee is given as to their accuracy or efficiency. This plan is for illustrative purposes only and should be used as such by any prospective purchaser.



FLOORPLANS

8 Stanhope Place, St. Leonards-On-Sea, TN38 0ED

www.justproperty.net



3 Bedrooms 3 Receptions 2 Bathrooms 1980.56 sq ft

8 Stanhope Place, St. Leonards-On-Sea, TN38 0ED

Freehold

£880,000





3 Bedrooms 3 Receptions 2 Bathrooms 1980.56 sq ft

PROPERTY DETAILS

This stunning 3-bedroom Georgian terraced property located in the heart of St Leonards-on-Sea, boasting an array of original period features and modern comforts. This charming home combines historical elegance with contemporary living, making it a truly unique find.

As you step through the front door, you are greeted by an inviting entrance hall that sets the tone for the rest of the house. To the left, the welcoming living room is bathed in natural light from the beautiful sash-style window, creating a warm and inviting atmosphere. This space seamlessly flows into the family room, perfect for entertaining or relaxing with loved ones.

Ascending a few steps, you enter the kitchen/diner, a bright and airy space ideal for family meals and social gatherings. The ground floor also features a convenient W/C and a small sun terrace that overlooks the rear garden.

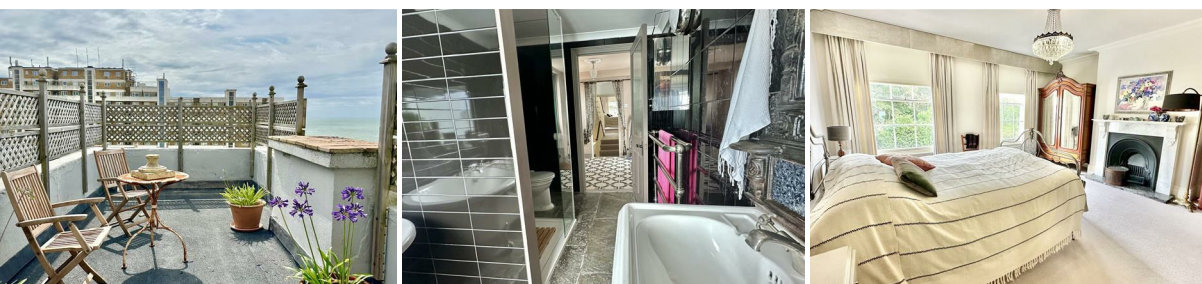
Descending the stairs, you'll find the practical and versatile lower ground floor, which includes a store room, workshop utility area, and direct access to the garden.

On the first floor, a lobby area leads you to a beautifully decorated bathroom, complete with a walk-in shower, roll-top bath, toilet, and wash hand basin. From the lobby, you can step out onto the first of two roof terrace.

Continuing down the hallway, you'll find two double bedrooms. The smaller bedroom features built-in wardrobes, a feature fireplace, and a sash-style window. The spacious second bedroom boasts two sash-style windows and another elegant feature fireplace.

The top floor offers a shower room with a walk-in shower, wash hand basin, and toilet. Additionally, this floor houses another spacious bedroom, complete with two sash-style windows and a feature fireplace. The highlight of the top floor is the second roof terrace, offering panoramic sea views.

This exceptional property is a must-see for anyone looking for a beautiful home with historical charm.



ROOM DIMENSIONS

Front Door	Bathroom
Entrance Hall	11'7" x 7'5" (3.55m x 2.27m)
Sitting Room	Sun Terrace
11'6" x 13'9" (3.52m x 4.20m)	Stairs Leading To
Family Room	Second Floor Landing
9'10" x 12'4" (3.02m x 3.77m)	Shower Room
Dining Room	9'8" x 12'4" (2.96m x 3.78m)
71" x 12'8" (2.16m x 3.87m)	Bedroom
Kitchen	14'5" x 15'8" (4.40m x 4.78m)
19'8" x 7'10" (6.01m x 2.40m)	Sun Deck
W/C	Stairs Down From Ground Floor
Sun Terrace	Leading To
Stairs Leading To	Store Room
First Floor Landing	Workshop
Bedroom	13'3" x 11'8" (4.05m x 3.57m)
14'5" x 15'8" (4.40m x 4.78m)	Utility Area
Bedroom	18'1" x 13'5" (5.53m x 4.09m)
9'8" x 12'4" (2.96m x 3.78m)	Garden Room
Lobby	Garden
7'6" x 7'5" (2.30m x 2.27m)	

FEATURES

- Highly Sought After Georgian House
- Three Double Bedroom
- Original Period Features
- Two Sun Terraces
- Courtyard Garden
- Spectacular Panoramic Sea Views
- Two Bathrooms
- In the Heart of St Leonards
- Utility Area
- Internal Viewing Highly Recommended

