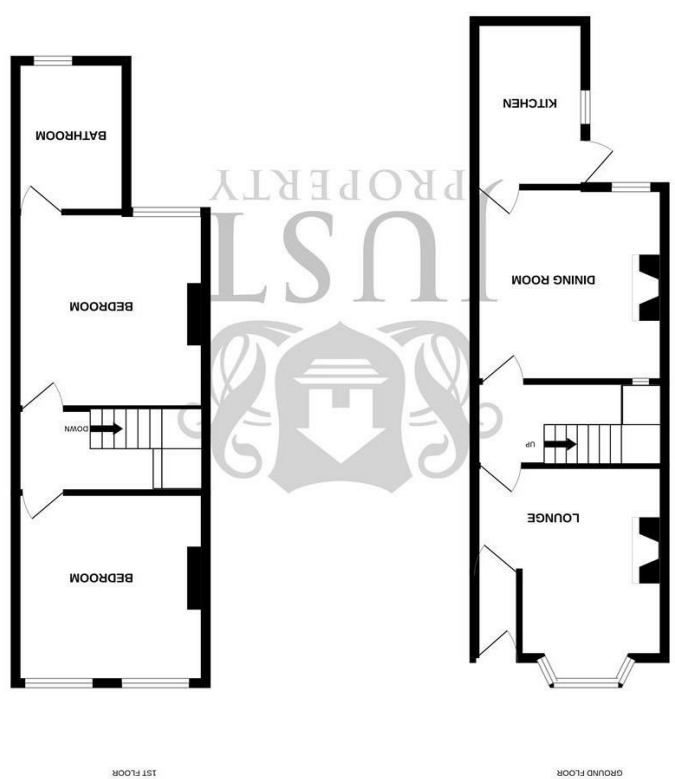


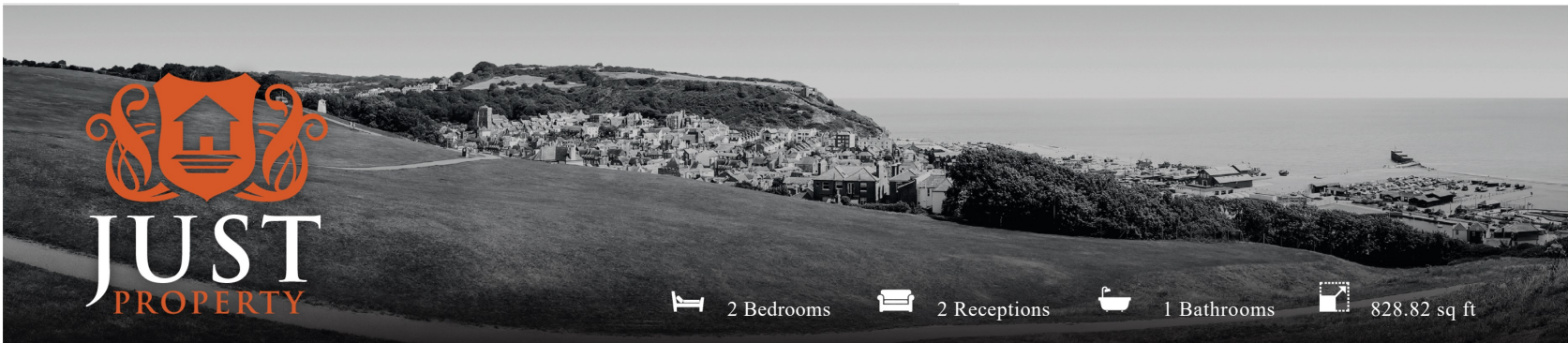
England & Wales	
EU Directive 2002/91/EC	
Very energy efficient - lower running costs	A (92 plus)
	B (81-91)
	C (69-80)
	D (55-68)
	E (39-54)
	F (21-38)
Not energy efficient - higher running costs	G (1-20)
Potential	100
Current	67



FLOORPLANS

4 Croft Terrace, Old Town, Hastings, TN34 3HG

www.justproperty.net



2 Bedrooms 2 Receptions 1 Bathrooms 828.82 sq ft

Freehold

£369,950

4 Croft Terrace, Old Town, Hastings, TN34 3HG





Freehold

£369,950

2 Bedrooms 2 Receptions 1 Bathrooms 828.82 sq ft

PROPERTY DETAILS

GUIDE PRICE £380-£400,000

Croft Terrace in Hastings Old Town - a charming period house nestled in a quiet residential terrace in the historic old town, just a stone's throw away from the seafront. This delightful property boasts original features that add character and warmth to its 876 sq ft living space.

As you step inside, you are greeted by two inviting reception rooms that offer versatile spaces for entertaining guests or simply unwinding after a long day. With two double bedrooms to the first floor, there is ample room for a small family or guests to stay over. The bathroom provides convenience and completes the homely feel of this lovely terraced house.

The allure of this property lies not only in its quaint charm but also in its highly desirable location. Living in the historic old town means you are surrounded by the rich tapestry of Hastings' past, with its interesting streets with wonderful independent shops and picturesque historic architecture. Being close to the seafront allows for leisurely strolls along the promenade and enjoying the fresh sea air whenever you please.

If you appreciate homes with a story to tell and a sense of community, then this period house on Croft Terrace is the perfect place to call home. Don't miss out on the opportunity to own a piece of history in this sought-after location, please call Just Property on 01424 444100 to find out more.



ROOM DIMENSIONS

Front Door

Entrance Hallway

Family Lounge
14'2" x 10'2" (4.34 x 3.12)

Dining Room
11'5" x 11'5" (3.48 x 3.48)

Kitchen
8'11" x 6'0" (2.74 x 1.83)

Stairs To First Floor Landing

Bedroom
12'0" x 11'6" (3.66 x 3.51)

Bedroom
11'5" x 8'5" (3.48 x 2.57)

Bathroom
9'1" x 6'7" (2.77 x 2.01)

Front Seating Area

Rear Courtyard

FEATURES

- Terraced Period Property
- Two Double Bedrooms
- Many Original Features
- Communal Outside Space
- Heart Of Hastings Old Town
- Rear Courtyard Garden
- Walking Distance To Beach & Promande
- Two Reception Rooms
- Solar Panels
- GUIDE PRICE £380,000-£400,000

