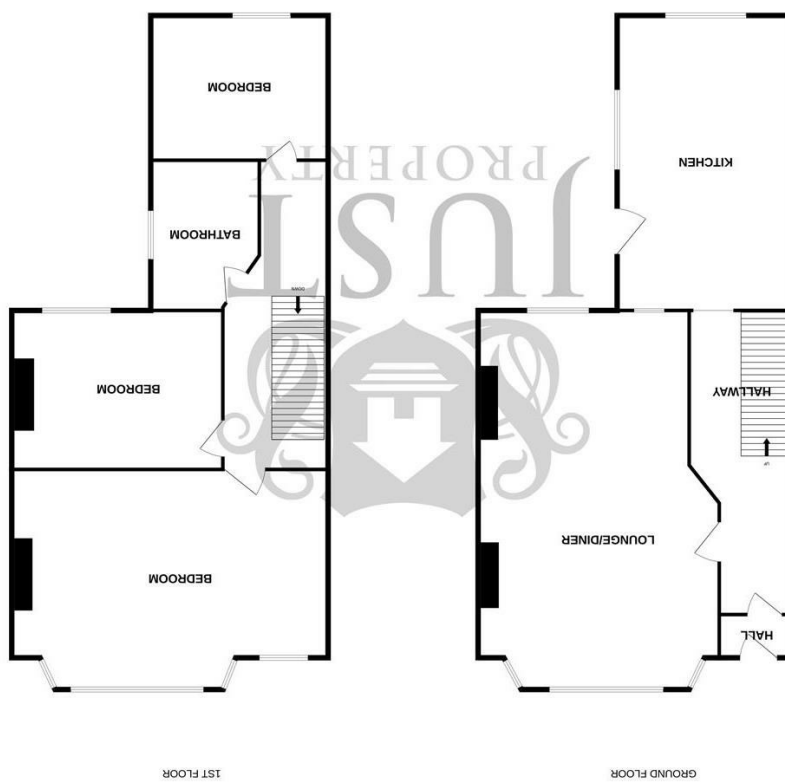
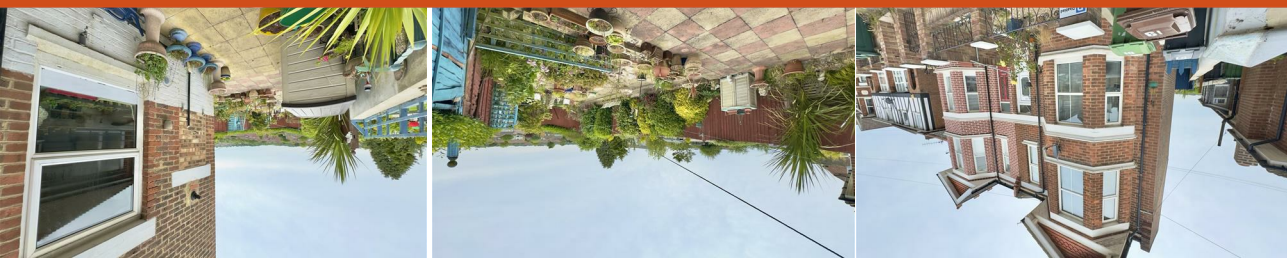


England & Wales	
EU Directive 2002/91/EC	
Current	Potential
81	57
Very energy efficient - lower running costs	
A (92 plus)	
B (81-91)	
C (69-80)	
D (55-68)	
E (39-54)	
F (21-38)	
G (1-20)	
Not energy efficient - higher running costs	

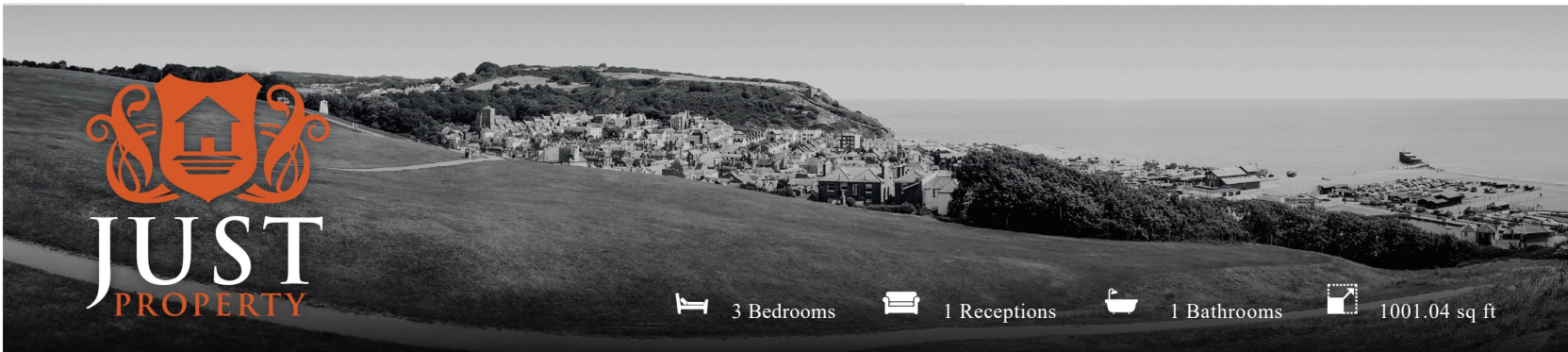


FLOORPLANS

61 Burry Road, St. Leonards-On-Sea, TN37 6QZ



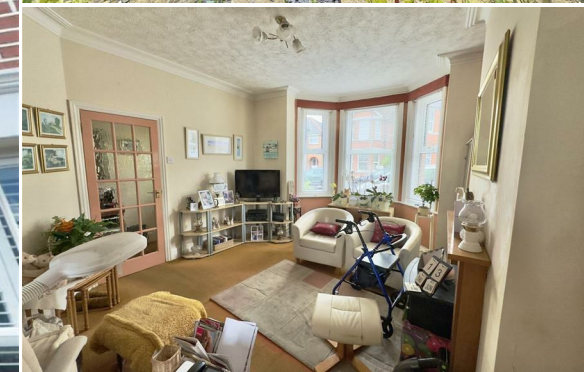
www.justproperty.net



61 Burry Road, St. Leonards-On-Sea, TN37 6QZ

Freehold

£310,000





Freehold

£310,000

3 Bedrooms 1 Receptions 1 Bathrooms 1001.04 sq ft

PROPERTY DETAILS

This charming Edwardian semi-detached house presents a unique opportunity for those looking to modernise and create their dream home. With three spacious bedrooms and classic period features, this property exudes potential and character.

Upon entering, you are welcomed by a hallway that leads to an expansive open-plan living/dining room, featuring a large bay front that floods the room with natural light, enhancing the sense of space and brightness. The kitchen, located at the rear of the house, offers ample potential for redesign and modernisation to suit contemporary tastes.

Upstairs, the property boasts three well-proportioned bedrooms. The master bedroom is particularly impressive with its own bay front, providing a bright and airy . The additional two bedrooms offer ample space for family members or guests. The bathroom, while functional, offers another opportunity for modernisation to create a luxurious and contemporary space.

Externally, the property features a beautifully landscaped garden, offering a private outdoor space perfect for relaxation and entertaining. The garden has mature plants and thoughtful layout. The house is equipped with central heating and is double-glazed throughout.

Located in a desirable area of St Leonard's, this Edwardian semi-detached house offers the perfect blend of period charm and potential for modern living.



ROOM DIMENSIONS

Front Door

Entrance Hall

Living/Dining Room
23'5" x 12'7" (7.16m x 3.86m)

Kitchen
14'10" x 10'0" (4.54m x 3.05m)

Stairs Leading Up Too

First Floor Landing

Bedroom
13'5" x 16'1" (4.11m x 4.92m)

Bedroom
11'1" x 10'7" (3.38m x 3.25m)

Bathroom

Bedroom
11'1" x 10'7" (3.38m x 3.25m)

Rear Garden

FEATURES

- Edwardian Property
- Semi Detached House
- Three Bedrooms
- In Need Of Modernising
- Open Plan Living/Dining Room
- Bay Fronted Living Room
- Landscaped Rear Garden
- Sought After Location
- Double Glazed Throughout
- Internal Viewing Highly Recommended

