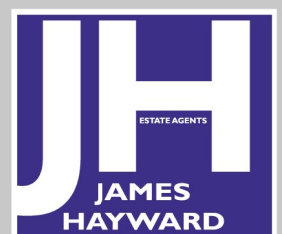




Holtwhite Avenue | | Enfield | EN2 0RS

Asking Price £550,000





## Key features

- CHARACTER MID TERRACE HOUSE IN SOUGHT AFTER LOCATION - CHAIN FREE
- THREE GOOD SIZED BEDROOMS
- TWO RECEPTION ROOMS WITH SOME ORIGINAL FEATURES
- KITCHEN-DINING ROOM WITH DIRECT ACCESS TO GARDEN
- FIRST FLOOR FAMILY BATHROOM
- GROUND FLOOR GUEST CLOAKROOM
- GOOD SIZED PAVED GARDEN WITH MATURE SHRUBS
- WITHIN EASY REACH OF LOCAL AMENITIES, SCHOOLS & TRANSPORT LINKS
- WALKING DISTANCE FROM ENFIELD TOWN CENTRE
- CLOSE TO GREEN SPACES, SPORTS & LEISURE FACILITIES

## Description

Nestled in the desirable area of Holtwhite Avenue, Enfield, this charming terraced house offers character and an opportunity, to create something to your own taste. Spanning an impressive 1,110 square feet, the property boasts three well-proportioned bedrooms, making it an ideal home for families or those seeking extra space. CHAIN FREE

Upon entering, you will be greeted by two spacious reception rooms that showcase some delightful original features, adding a touch of charm and warmth to this attractive home. These versatile living areas provide ample space for relaxation and entertaining guests. The heart of the home is the kitchen-dining room, which benefits from direct access to the mature rear garden, perfect for al fresco dining or enjoying a quiet moment outdoors.

The first-floor family bathroom is conveniently located, serving the three bedrooms with ease and there is a ground floor cloakroom, ensuring convenience all round. As mentioned earlier, the property also features a good sized rear garden, complete with a storage shed, offering a private oasis for gardening enthusiasts or a safe play area for children.

This characterful home is situated in a sought-after location, providing easy access to local amenities, schools, and transport links. Whether you are looking to settle down or invest, this property presents a wonderful opportunity to enjoy comfortable living in a vibrant community. Do not miss the chance to make this delightful house your new home.

## Directions



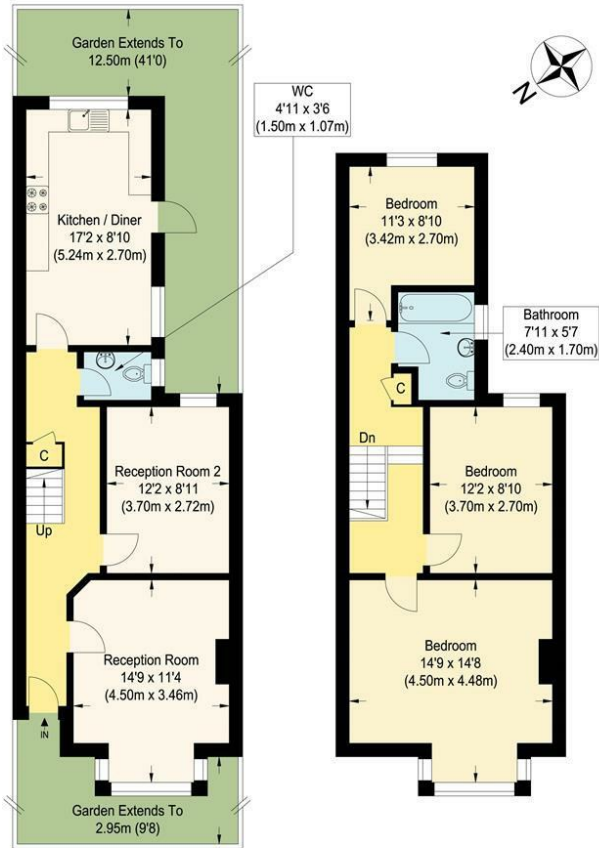


A delightful, three bedroom home, that provides the opportunity to create something to your own taste whilst retaining the charm of its character. This very attractive house offers good sized living space, including two reception rooms, a kitchen-dining room, first floor bathroom and ground floor cloakroom. The property is complemented by a good sized, mature garden, currently paved and has a storage shed too; it offers a great opportunity to nurture your inner gardener.



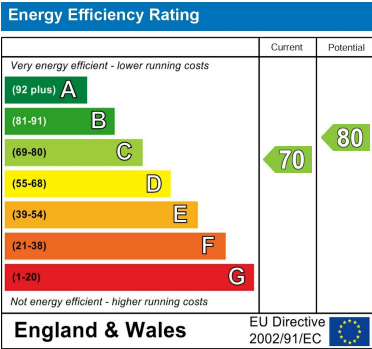


Floor plans



Holtwhite Avenue, EN2

Approximate Gross Internal Floor Area : 103.10 sq m / 1109.75 sq ft  
Illustration for identification purposes only, measurements are approximate, not to scale.



181 Chase Side  
Enfield  
Greater London  
EN2 0PT  
020 8367 4000  
sales@james-hayward.com  
James-Hayward.com