



Woodfield Close | | Enfield | EN1 2AZ

Asking Price £345,000



Key features

- TOP FLOOR FLAT OFFERED CHAIN FREE
- TWO DOUBLE BEDROOMS
- BRIGHT & SPACIOUS RECEPTION-DINING ROOM
- MODERN FITTED KITCHEN
- THREE PIECE BATHROOM SUITE
- COMMUNAL PARKING
- LONG LEASE
- WITHIN EASY REACH OF ENFIELD TOWN & STATION
- VIEWS OVER ENFIELD CRICKET GROUND
- WELL MAINTAINED THROUGHOUT

Description

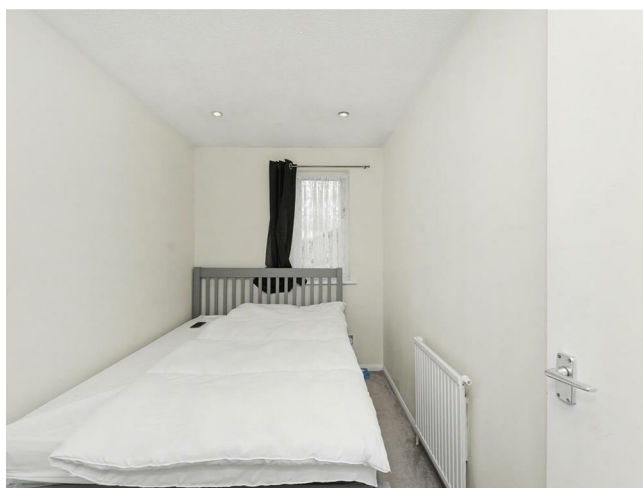
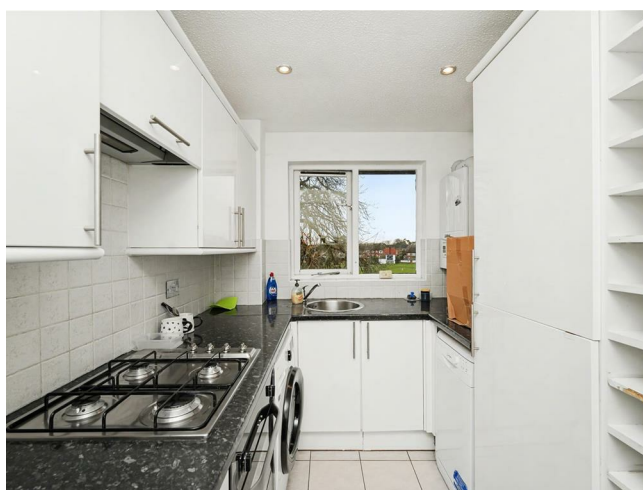
Established in the desirable area of Woodfield Close, Enfield, this charming top-floor apartment offers a perfect blend of comfort and modern living. Spanning an impressive 577 square feet, the property features a spacious reception-dining room, ideal for both relaxation and entertaining guests. The modern kitchen is well-equipped, making it a delightful space for culinary enthusiasts.

This two-bedroom flat is designed to cater to a variety of lifestyles, whether you are a first-time buyer, a small family, or looking to downsize and it also benefits from views over Enfield Cricket ground. The bedrooms are generously sized, providing ample space for rest and personalisation. The bathroom is well-appointed, ensuring convenience for daily routines.

Residents will appreciate the communal parking available for one vehicle, adding to the practicality of this lovely home. With a long lease in place, this property presents a fantastic opportunity for those seeking a secure and comfortable living environment.

Woodfield Close is conveniently located, offering easy access to local amenities, transport links including Enfield Town main line station and sports and leisure facilities, making it an ideal choice for anyone looking to enjoy the vibrant community of Enfield. This apartment is not just a place to live; it is a place to call home. OFFERED CHAIN FREE

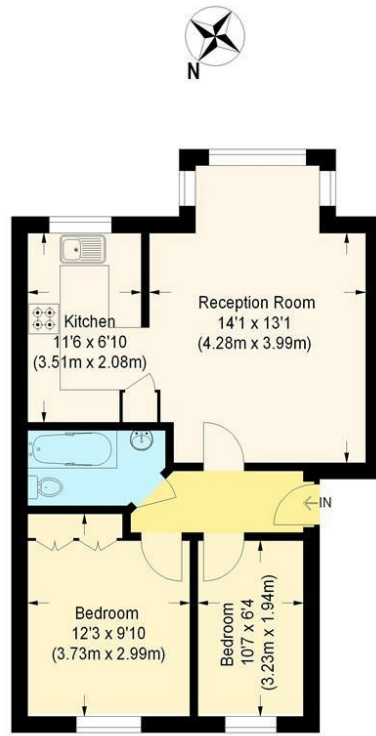
Directions



A well presented, bright & spacious two bedroom, top floor apartment. This very appealing flat provides good sized living accommodation including reception-dining room, modern fitted kitchen, three piece bathroom suite and offers views over Enfield Cricket Ground. In addition, the property benefits from communal parking and has a long lease. Enfield Town centre and main line station are within easy reach, as are an abundance of other everyday amenities. An ideal first time purchase, downsizer or a lovely home for a small family - A lot to offer and chain free



Floor plans



Woodfield Close

Approximate Gross Internal Area = 53.6 sq m / 577 sq ft
 Illustration for identification purposes only.
 measurements are approximate, not to scale. (ID330413)

Energy Efficiency Rating		
	Current	Potential
<i>Very energy efficient - lower running costs</i>		
(92 plus) A		
(81-91) B		
(69-80) C	75	76
(55-68) D		
(39-54) E		
(21-38) F		
(1-20) G		
<i>Not energy efficient - higher running costs</i>		
England & Wales	EU Directive 2002/91/EC	



181 Chase Side
 Enfield
 Greater London
 EN2 0PT
 020 8367 4000
sales@james-hayward.com
James-Hayward.com