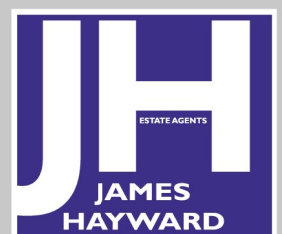




Bury Street | | London | N9 9LH

Asking Price £220,000



Key features

- 10TH FLOOR FLAT WITH OWN BALCONY - INVESTORS ONLY
- THREE GOOD SIZED BEDROOMS
- BRIGHT & AIRY RECEPTION-DINING ROOM
- FITTED KITCHEN
- THREE PIECE BATHROOM SUITE
- PLENTY OF HALLWAY STORAGE
- COMMUNAL PARKING
- WITHIN EASY REACH OF SHOPS, TRANSPORT & MOTORWAY LINKS
- CLOSE TO SOME HIGHLY REGARDED SCHOOLS
- PLENTY OF RECREATIONAL GREEN SPACES

Description

INVESTORS ONLY - , James Hayward are pleased to present a 10th floor apartment, located on Bury Street in the heart of London. This delightful flat boasts a spacious reception-dining room with its own balcony, With three good-sized bedrooms. The property also offers a well-appointed bathroom and ample storage in the hallway, ensuring that you can keep your living space tidy and organised.

Situated on the 10th floor, this flat provides panoramic views of the surrounding area, additionally, there is communal parking available for your convenience.

Location wise, the property is situated within easy reach of local shops, green spaces , some highly regarded schools, motorway and transport links

Don't miss out on this great investment opportunity, there is a tenant currently in situ who is happy to remain . Contact us today to arrange a viewing.

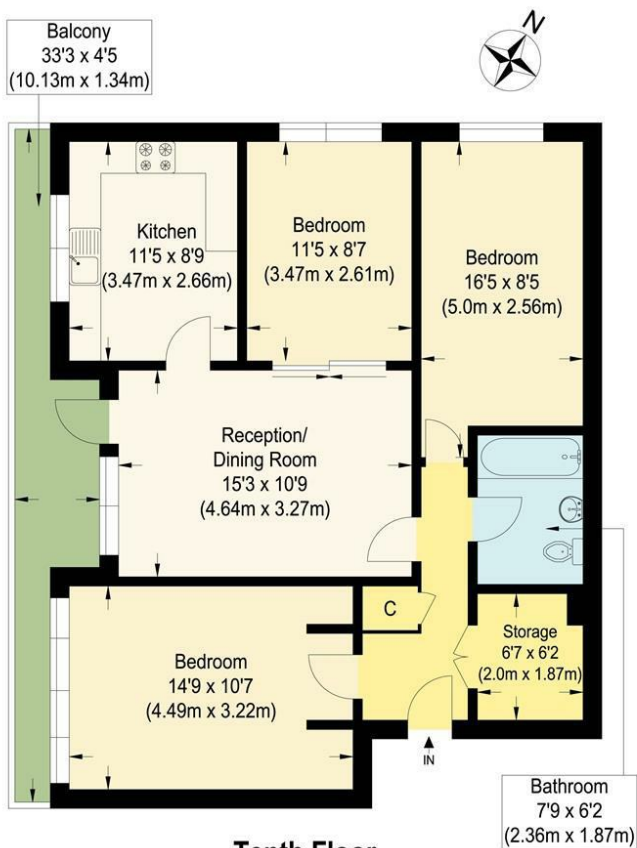
Directions



A great opportunity to acquire a 10th floor flat with own balcony and panoramic views across the surrounding area. The property provides good sized living space including three bedrooms, reception-dining area, kitchen and bathroom. Location wise, the property is near transport & motorway links, green spaces, local shops and some highly regarded schools.

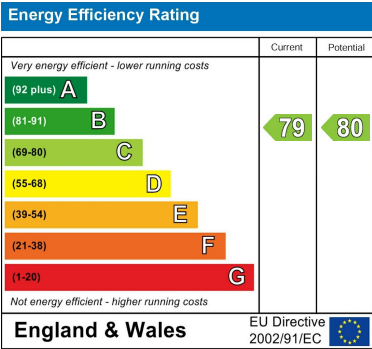


Floor plans



Bury Street

Approximate Gross Internal Floor Area : 76.60 sq m / 824.51 sq ft
Illustration for identification purposes only, measurements are approximate, not to scale.



181 Chase Side
Enfield
Greater London
EN2 0PT
020 8367 4000
sales@james-hayward.com
James-Hayward.com