



1, Newsholme Drive | London | N21 1SQ

Asking Price £300,000



## Key features

- MID FLOOR RETIREMENT FLAT - OFFERED CHAIN FREE
- TWO DOUBLE BEDROOMS
- BRIGHT & SPACIOUS RECEPTION WITH FEATURE FIREPLACE
- FITTED KITCHEN-DINING ROOM
- SHOWER/WC ROOM WITH WALK IN SHOWER
- ONE NON EXCLUSIVE PARKINGSPACE PER PROPERTY & VISITORS' CAR PARK
- WITHIN EASY REACH OF LOCAL AMENITIES AND BUS ROUTES
- GATED DEVELOPMENT & BEAUTIFULLY MAINTAINED GROUNDS
- COMMUNAL LOUNGE & GUEST SUITE
- SEE ADDITIONAL INFORMATION FOR CHARGES AND SERVICES

## Description

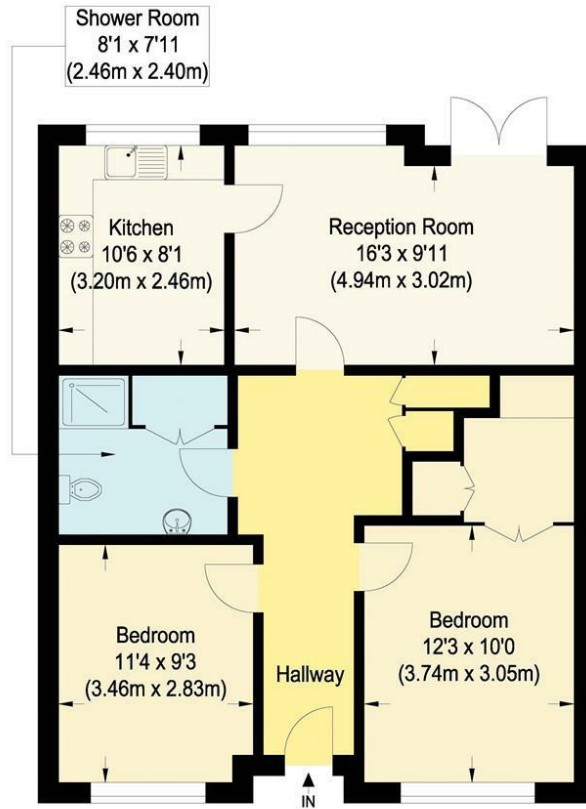
James Hayward are delighted to offer a chain free, two double bedroom mid floor retirement flat, located within beautifully maintained grounds, in a gated complex in Winchmore Hill. The property offers bright & airy living space and is ideally situated within easy reach of local amenities including Sainsburys Supermarked, the GP surgery, pharmacy and local bus service. This is a property to relax in and enjoy the benefits and extensive services and support.

## Directions





# Floor plans



## Blake Court

Approximate Gross Internal Floor Area : 68.10 sq m / 733.02 sq ft  
Illustration for identification purposes only, measurements are approximate, not to scale.

| Energy Efficiency Rating                    |                            |           |
|---------------------------------------------|----------------------------|-----------|
|                                             | Current                    | Potential |
| Very energy efficient - lower running costs |                            |           |
| (92 plus) <b>A</b>                          |                            |           |
| (81-91) <b>B</b>                            | <b>81</b>                  | <b>82</b> |
| (69-80) <b>C</b>                            |                            |           |
| (55-68) <b>D</b>                            |                            |           |
| (39-54) <b>E</b>                            |                            |           |
| (21-38) <b>F</b>                            |                            |           |
| (1-20) <b>G</b>                             |                            |           |
| Not energy efficient - higher running costs |                            |           |
| <b>England &amp; Wales</b>                  | EU Directive<br>2002/91/EC |           |



181 Chase Side  
Enfield  
Greater London  
EN2 0PT  
020 8367 4000  
sales@james-hayward.com  
James-Hayward.com