



Canonbury Road | | Enfield | EN1 3LW

Asking Price £475,000



Key features

- THREE BEDROOM MID-TERRACE
- CHARACTER VICTORIAN HOME
- THROUGH LOUNGE
- MODERN FITTED KITCHEN
- CHAIN FREE
- EASY ACCESS TO ENFIELD TOWN AND STATION
- SCHOOLS FOR ALL AGES ARE NEAR BY
- HILLY FIELDS, WHITEWEBBS AND TUCKERS PARK ARE WITHIN EASY WALKING DISTANCE

Description

James Hayward are delighted to offer this charming Victorian mid-terrace house located on Canonbury Road in Enfield. This delightful property boasts character and style, perfect for those seeking a cozy yet spacious home.

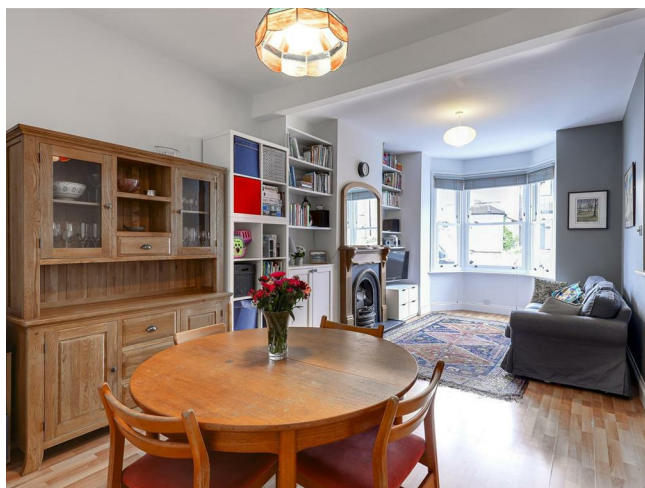
As you step inside, you are greeted by a warm and inviting through lounge, ideal for entertaining guests or simply relaxing with your loved ones. With one reception room, three bedrooms, and a well-appointed bathroom, this house offers ample space for comfortable living.

One of the standout features of this property is its Victorian bay front, adding a touch of elegance to the exterior. The chain-free status of this house means you can move in hassle-free and make it your own.

Conveniently situated, this home provides easy access to Enfield Town and Station, making commuting a breeze. Additionally, its proximity to local schools and amenities ensures that everything you need is within reach.

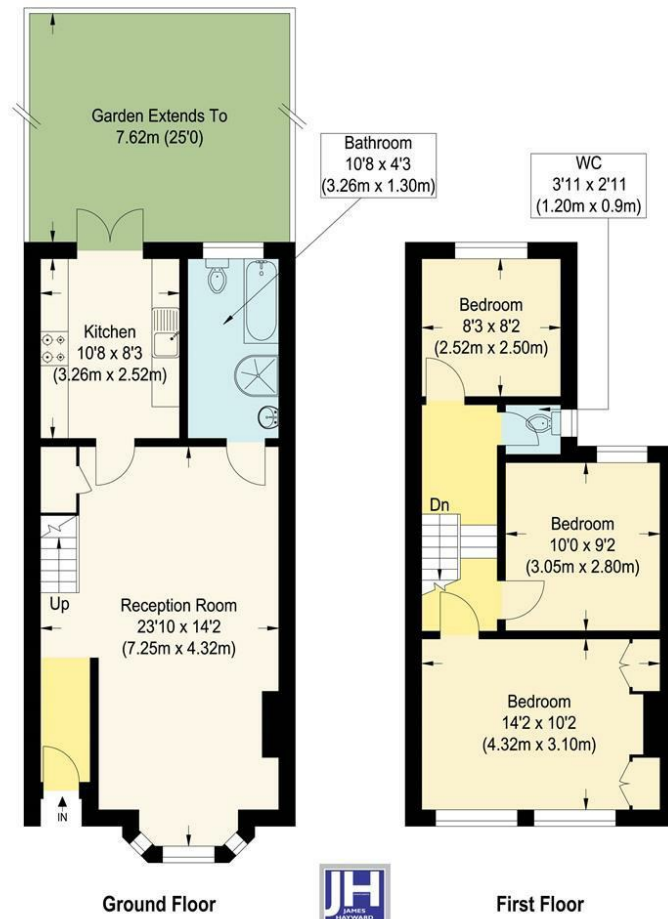
Don't miss out on the opportunity to own this lovely Victorian house on Canonbury Road. Book a viewing today and envision the potential this property holds for you and your family.

Directions



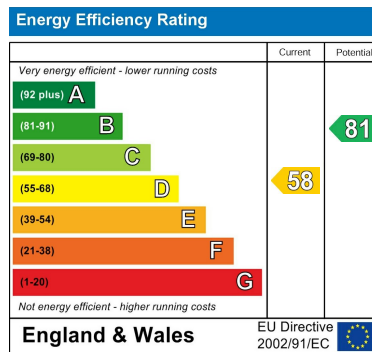


Floor plans



Canonbury Road

Approximate Gross Internal Floor Area : 80.30 sq m / 864.34 sq ft
 Illustration for identification purposes only, measurements are approximate, not to scale.



181 Chase Side
 Enfield
 Greater London
 EN2 0PT
 020 8367 4000
 sales@james-hayward.com
 James-Hayward.com