



The Birches | | London | N21 1NJ
Asking Price £1,100,000



Key features

- EXTENDED FOUR BEDROOM SEMI DETACHED HOME
- BRIGHT & SPACIOUS FRONT RECEPTION WITH FEATURE FIREPLACE
- MODERN KITCHEN-LIVING ROOM WITH DIRECT ACCESS TO GARDEN
- GUEST CLOAKROOM & FIRST FLOOR BATHROOM
- EN-SUITE SHOWER ROOM & WALK IN WARDROBE TO PRIMARY LOFT BEDROOM
- GARAGE TO REAR OF PROPERTY
- GOOD SIZED, WELL MAINTAINED REAR GARDEN WITH PATIO & STORAGE
- CLOSE TO OAKWOOD UNDERGROUND & GRANGE PARK MAIN LINE STATIONS
- WITHIN EASY REACH OF SCHOOLS FOR ALL AGES
- TRENT PARK, LOCAL SHOPS,, SPORTS & LEISURE FACILITIES ALL NEAR BY

Description

Welcome to The Birches, a charming property situated in a sought after location close to Oakwood Park. This delightful house boasts bright & airy living accommodation, complemented by a good sized garden and parking, offering ample space for a growing family or those who love to entertain guests.

Built in 1930, this property exudes character and charm whilst also offering modern amenities. The highlight of the house is the modern kitchen-living room, perfect for hosting gatherings or simply enjoying a cozy night in. With direct access to the garden, you can easily extend your living space outdoors during the warmer months.

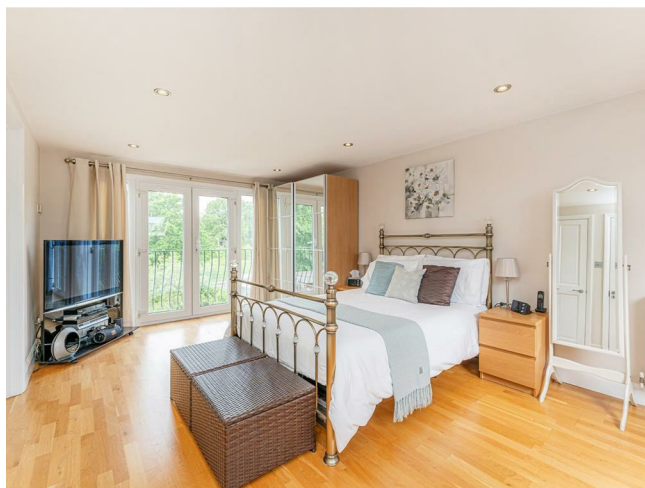
The primary bedroom features an en-suite bathroom and a walk-in wardrobe, providing a luxurious retreat within your own home. The entire property, creates a welcoming atmosphere throughout.

Additionally, The Birches comes with a brick-built garage and out-building, offering plenty of space for storage or potential conversion into a home office or gym.

The property is well served by transport links including Oakwood Underground, and Grange Park main line station; there are some highly-regarded schools for all ages close by and shops, Trent Park, sports & leisure facilities, are all within easy reach

Don't miss out on the opportunity to own this beautiful property in a prime location. Contact us today to arrange a viewing and make The Birches your new home in London.

Directions



Beautifully presented, extended four bedroom home boasting en-suite & walk in wardrobe to the primary loft bedroom. A stunning kitchen-living room offers great family and entertaining space and there is a lovely front reception with feature fireplace, all complemented by a good sized garden, parking and storage

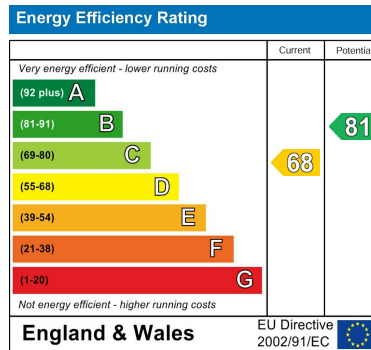


Floor plans



The Birches

Approximate Gross Internal Floor Area : 165.30 sq m / 1779.27 sq ft (Excluding Garage / Storage)
 Garage Area : 12.0 sq m / 129.16 sq ft
 Storage Area : 7.30 sq m / 78.57 sq ft
 Illustration for identification purposes only, measurements are approximate, not to scale.



181 Chase Side
 Enfield
 Greater London
 EN2 0PT
 020 8367 4000
sales@james-hayward.com
James-Hayward.com