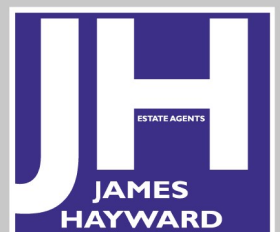




Linwood Crescent | | Enfield | EN1 4US

£289,995



Key features

- MODERN GROUND FLOOR APARTMENT
- SPACIOUS LOUNGE
- TWO BEDROOMS
- MODERN BATHROOM SUITE
- CHAIN FREE
- IDEAL FIRST TIME BUY
- EASY ACCESS TO ENFIELD TOWN
- SHORT WALK TO DAVID LLOYD FITNESS

Description

James Hayward have pleasure in offering this modern ground floor apartment located in the desirable Linwood Crescent. The property offers 1 reception room, 2 bedrooms, and a well-maintained bathroom, offering a comfortable living space.

Built in 1995, this flat exudes a contemporary feel with its sleek design and practical layout. With a generous 731 sq ft of living space, there is ample room to relax and entertain. The property is chain-free, making it an ideal choice for those looking for a hassle-free purchase.

Conveniently situated close to transport links, this apartment offers easy access to the surrounding areas, making commuting a breeze. Whether you're heading to work or exploring the vibrant city, this location is sure to cater to your needs.

This property is an excellent opportunity for first-time buyers looking to step onto the property ladder. With a new lease being currently applied for, you can enjoy peace of mind and a fresh start in your new home.

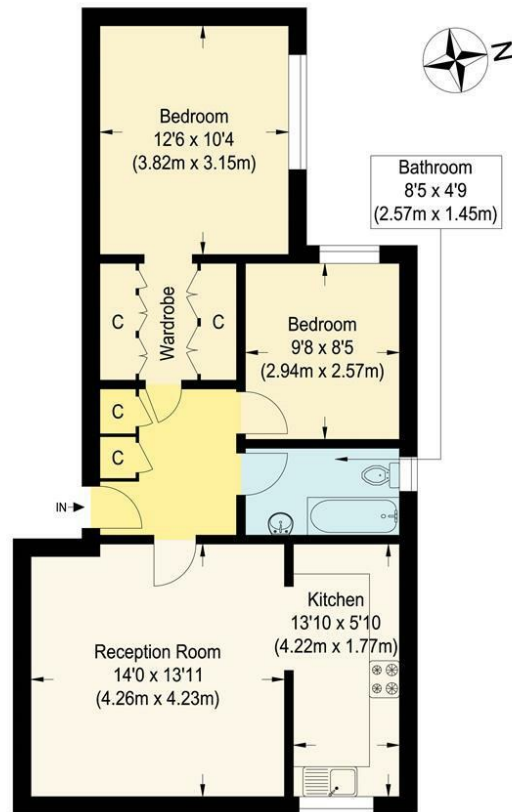
Don't miss out on the chance to own this lovely flat in a sought-after location. Contact us today to arrange a viewing and make this property your own!

Directions





Floor plans



Ground Floor

Linwood Crescent

Approximate Gross Internal Floor Area : 61.20 sq m / 658.75 sq ft
Illustration for identification purposes only, measurements are approximate, not to scale.

Energy Efficiency Rating		
	Current	Potential
<i>Very energy efficient - lower running costs</i>		
(92 plus) A		
(81-91) B		
(69-80) C		
(55-68) D	63	76
(39-54) E		
(21-38) F		
(1-20) G		
<i>Not energy efficient - higher running costs</i>		
England & Wales	EU Directive 2002/91/EC	



181 Chase Side
Enfield
Greater London
EN2 0PT
020 8367 4000
sales@james-hayward.com
James-Hayward.com