



Siward Road | | London | N17 7PJ

Asking Price £399,995



Key features

- TWO DOUBLE BEDROOM TERRACED HOUSE
- BRIGHT & AIRY RECEPTION ROOM
- GOOD SIZED KITCHEN
- DOWNSTAIRS THREE PIECE SUITE BATHROOM
- REAR GARDEN WITH PATIO
- CLOSE TO UNDERGROUND & MAIN LINE STATIONS
- WITHIN EASY REACH OF BOTH WOOD GREEN & TOTTENHAM HIGH ROADS
- AMENITIES TO SUIT ALL REQUIREMENTS WITHIN EASY REACH
- ABUNDANCE OF GREEN SPACES CLOSE BY

Description

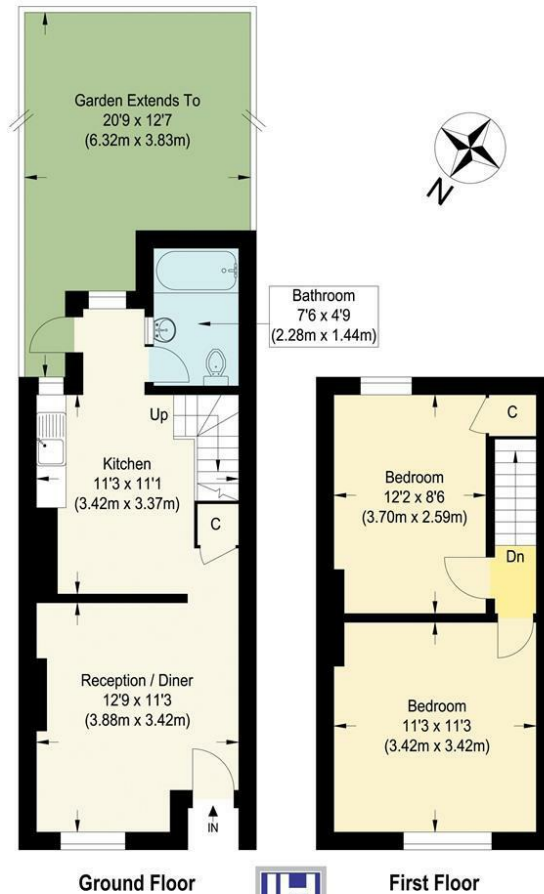
James Hayward have pleasure in offering a two double bedroom, terraced home, situated in a quiet residential street, within easy reach of both Wood Green and Tottenham High Roads. The property provides bright and airy living space and is complemented by a good sized garden, transport links including Wood Green, Turnpike Lane Underground (Piccadilly Line) and Bruce Grove main line stations.

Directions



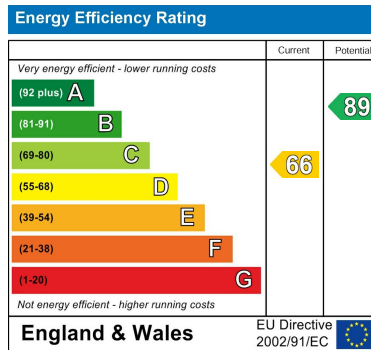


Floor plans



Siward Road

Approximate Gross Internal Floor Area : 55.1 sq m / 593.09 sq ft
 Illustration for identification purposes only, measurements are approximate, not to scale.



181 Chase Side
 Enfield
 Greater London
 EN2 0PT
 020 8367 4000
 sales@james-hayward.com
 James-Hayward.com