



Drake Street | | Enfield | EN2 0LQ

Guide Price £355,000

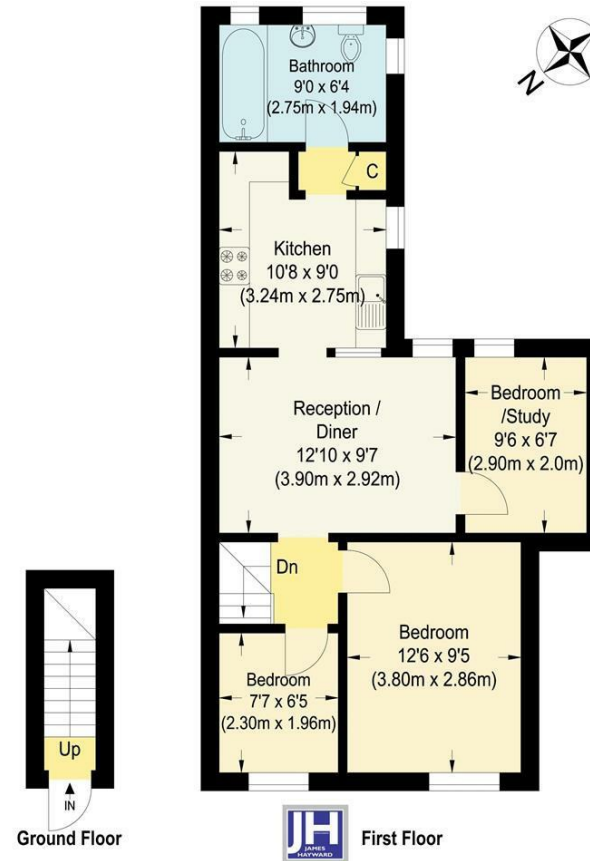




Drake Street |  
 Enfield | EN2 0LQ  
 Guide Price £355,000

James Hayward are delighted to present, a stylish and beautifully presented, three bedroom, first floor maisonette. The property is ideally situated for an abundance of shops, restaurants, cafes and other amenities along both Lancaster Road and Chase Side; Gordon Hill main line station is within easy reach, as is Enfield Town, schools for all ages, sports & leisure facilities and green spaces. If you are a first time purchaser, looking to downsize or invest, this is a perfect flat to view.

- IMMACULATE FIRST FLOOR MAISONETTE
- WELL APPOINTED KITCHEN-BREAKFAST ROOM
- THREE PIECE BATHROOM SUITE
- SHORT WALK FROM GORDON HILL STATION
- EXCELLENT TRANSPORT & MOTORWAY LINKS CLOSE BY
- THREE BEDROOMS
- SPACIOUS RECEPTION-DINING ROOM
- CLOSE TO LOCAL SHOPS, GREEN SPACES & SCHOOLS
- WITHIN EASY REACH OF ENFIELD TOWN
- LONG LEASE IN EXCESS OF 900 YEARS



Energy Efficiency Rating		Current	Potential
<i>Very energy efficient - lower running costs</i>			
(92 plus)	A		
(81-91)	B		
(69-80)	C		
(55-68)	D		
(39-54)	E		
(21-38)	F		
(1-20)	G		
<i>Not energy efficient - higher running costs</i>			
<b>England &amp; Wales</b>		EU Directive 2002/91/EC	

181 Chase Side  
 Enfield  
 Greater London  
 EN2 0PT  
 020 8367 4000  
 sales@james-hayward.com

**Drake Street, EN1**

Approximate Gross Internal Floor Area : 54.80 sq m / 589.86 sq ft  
 Illustration for identification purposes only, measurements are approximate, not to scale.