



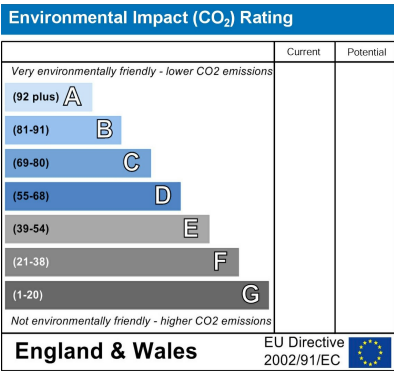
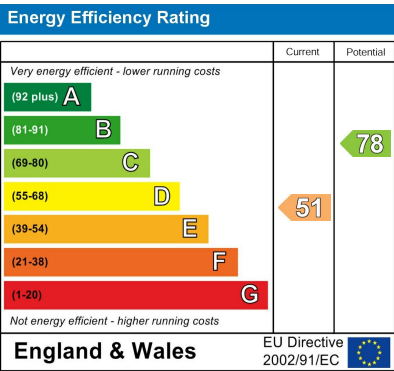
**Colesdale
Cuffley**



**£864,950
Freehold**

Stunning 5-Bedroom Detached Home with Breathtaking Country Views! Discover this beautifully presented home featuring a spacious open-plan kitchen diner with a center island and bi-fold doors leading to a landscaped south-facing garden. Enjoy the comfort of a luxury fitted bathroom, a generous living room, and gas heating with double glazing throughout. Located near Cuffley School & King George V Playing fields, this property also offers driveway parking and sits in a highly sought-after location. Viewing highly recommended – don't miss out on this perfect blend of rural charm and modern living!

- **Stunning Rolling Country Views**
- **Detached Five Bedroom House**
- **Spacious Luxury Fitted Bathroom**
- **Open Planned Kitchen Diner with Centre Island & bi-fold doors**
 - **Spacious Living Room**
 - **Own Driveway Parking**
- **Gas Heating & Double Glazing**
- **Popular Location Close to Cuffley School & Park**
 - **Landscaped South Facing Garden**
 - **Viewing Highly Recommended**



Entrance

Composite opaque leaded light entrance door into:-

Living Room

Double glazed window to the front. Double radiator. Inset spotlights to ceiling.

Inner Hallway

Built in storage cupboard with shoe storage racks. Walk in built in storage cupboard with inset spotlight. Stairs with oak balustrade and glass panels to the first floor. Door into:-

Cloakroom

Low flush W.C. Wall hung wash hand basin with mixer tap. Porcelain tiled floor. Extractor fan.

Open Plan Kitchen/Dining Room

Aluminum bi-folding double glazed doors to the rear. Double radiator. Range of wall and base fitted units in gloss white with Oak strip wood worktops over. Matching center island breakfast bar with wine storage. Stainless steel sink with mixer tap. Tiled effect splash backs. Space for range style cooker with stainless steel splash back and extractor fan over. Space and plumbing for American Fridge Freezer. Space and plumbing for washing machine and tumble dryer. Integrated dishwasher. Porcelain tiled floor. Inset spotlights to ceiling. Doors to Large Built in Walk in Larder Cupboard with space for second fridge.

First Floor Split Level Landing

Built in storage cupboards. Access to loft space. Inset spotlights. Doors to:-

Main Bedroom

Double glazed window to the rear views. Inset lighting. Double radiator. Range of fitted wardrobes and cupboards with a television recess. Coving to ceiling.

Bedroom 2

Double glazed window to the front. Double radiator.

Bedroom 3

Double glazed window to the front. Double radiator. Coving to ceiling.

Bedroom 4

Double glazed French doors to the front. Inset spotlights to the ceiling. Feature column radiator. Laminate wooden floor. Built in storage cupboard.

Bedroom 5

Double glazed window to the side. Radiator. Laminate wooden floor.

Family Bathroom

Luxury fitted bathroom. Double glazed window to the rear with views over the fields. Suite comprising of panel jacuzzi bath with mixer tap and shower attachment. Walk in glass shower enclosure with mixer valve, hand attachment and rain head. Vanity wash hand basin with mixer tap and cupboards under. Low flush W.C. with push button flush. Extractor fan. Inset spotlights. Two black towel radiators. Built in airing cupboard housing the Valliant Boiler. LED mirror with heating element. Extensively tiled walls and floors in porcelain tiles.

Garden

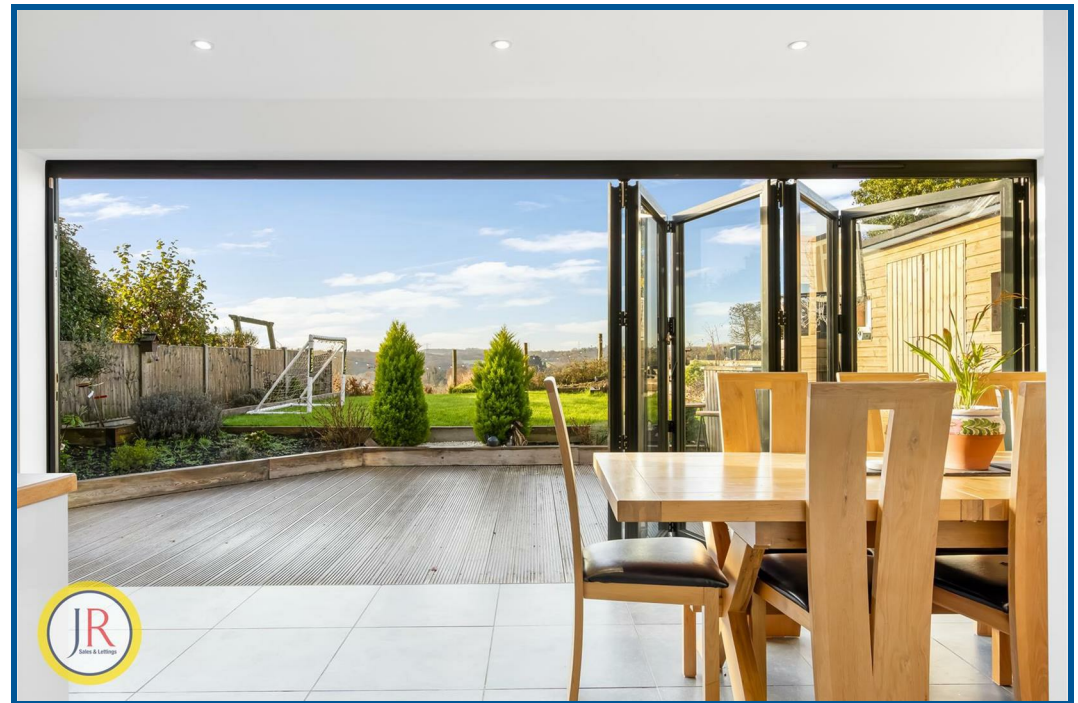
South West facing garden. Side pedestrian access. Water tap. Large decking area with raised shrub and flower borders. Patio paved pathway. Landscaped. Laid lawn. Fabulous views. Timber Outbuilding/Summer House with power and lighting.

Lean too/Storage Shed

To the side of the property and runs the length of the house.

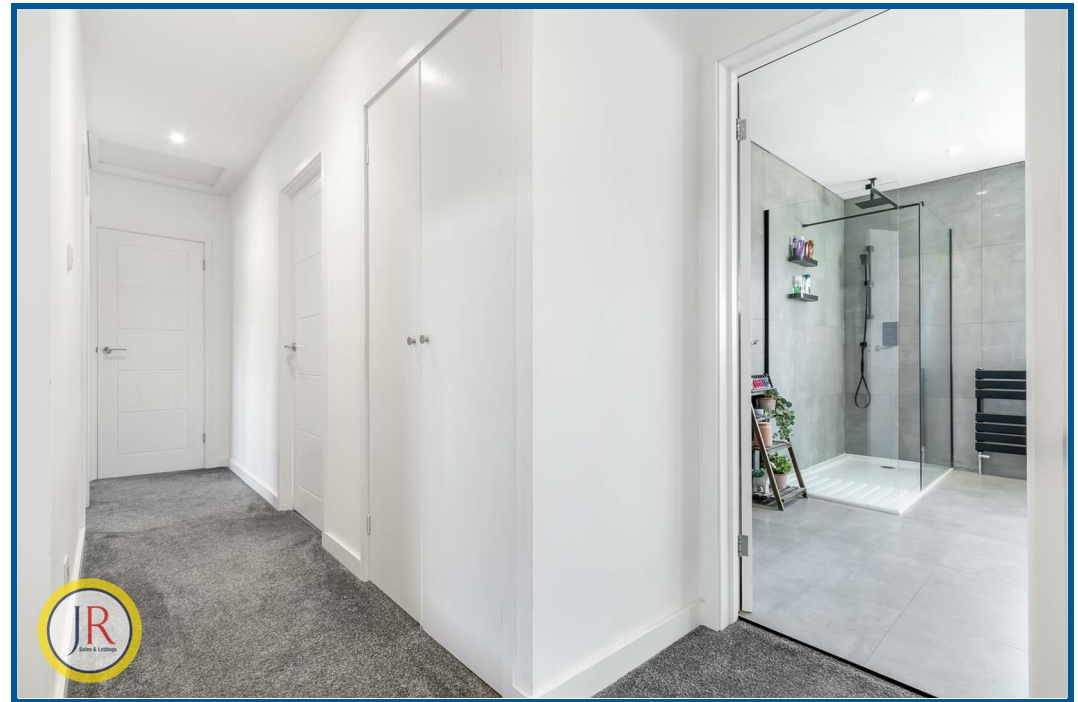
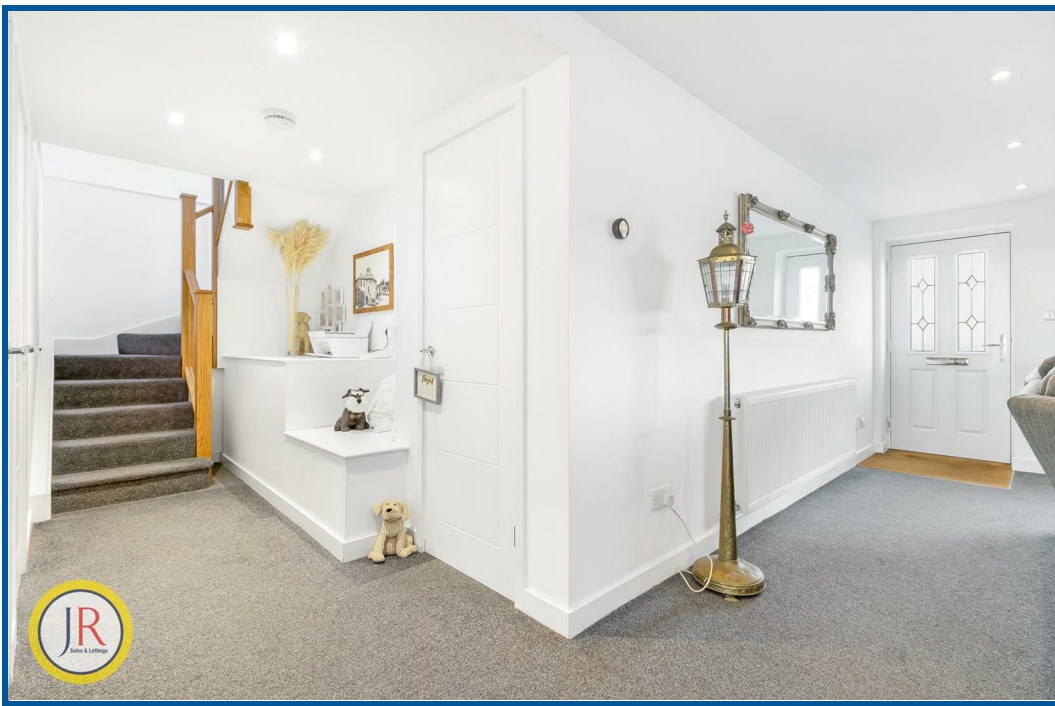
Front

Pink granite decorative gravel driveway. Landscaped garden with raised sleeper shrub and flower borders.

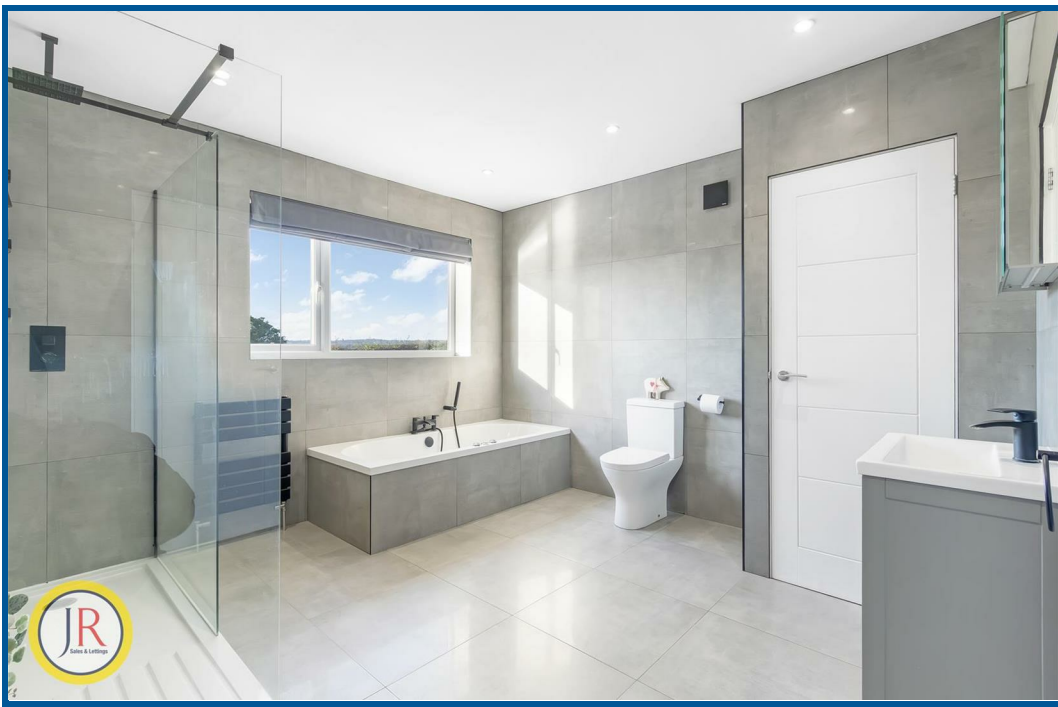








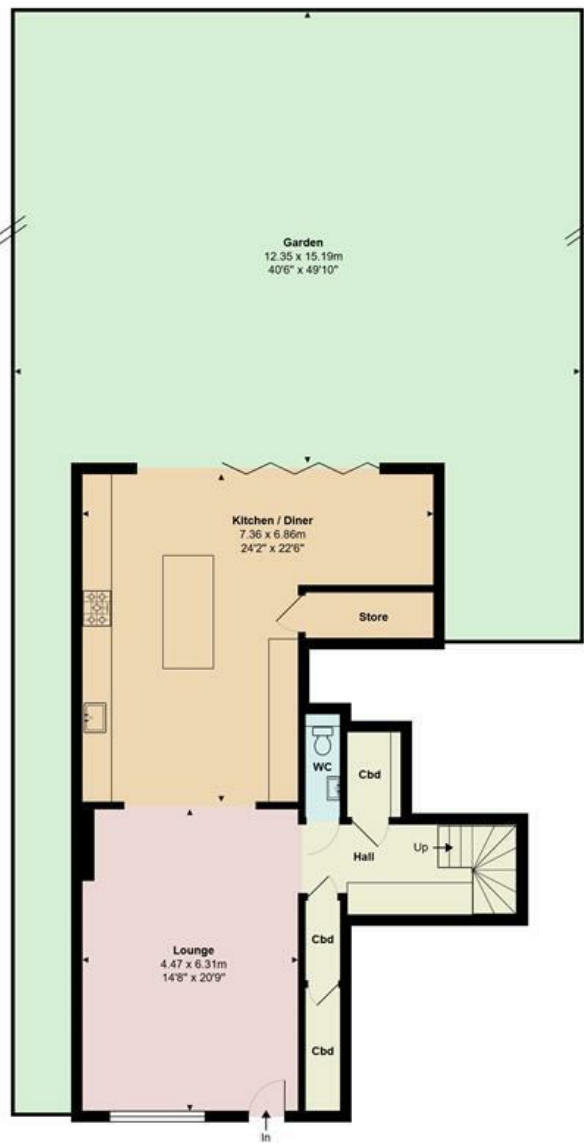












Ground Floor
Area: 86.7 m² ... 933 ft²



First Floor
Area: 84.7 m² ... 912 ft²



Colesdale, Cuffley, Potters Bar, EN6 4LQ

Total Area: 171.4 m² ... 1845 ft² (excluding void, garden)

All measurements are approximate and for display purposes only