



JR Sales & Letting

**Tilekiln Close  
West Cheshunt**



**£749,995  
Freehold**

Discover luxury in this immaculate five-bedroom, three-bathroom detached family home. Features include a Nolte Kitchen Design, Master En-Suite, off-road parking, fitted blinds, large loft room extension, and a spacious kitchen diner. Enjoy entertainment with wired speakers throughout, while bedrooms boast fitted wardrobes and premium carpets. Experience comfort with underfloor heating, air conditioning, and USB charging ports. Situated in Tilekiln Close, enjoy proximity to local amenities, transportation links, and Goffs School. A sophisticated family haven with modern conveniences.

Step into luxury with this impeccably presented five-bedroom, three-bathroom detached family home which is offered Chain Free.

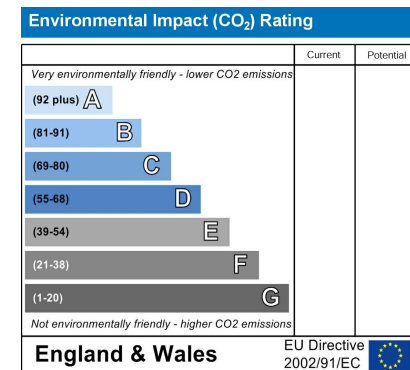
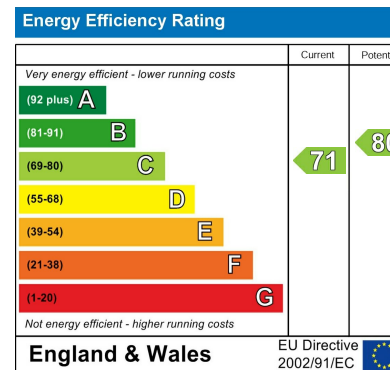
Boasting a range of features, including a stylish Nolte Kitchen Design, a lavish Master En-Suite, and convenient off-road parking, this property is a blend of sophistication and functionality. Fitted blinds adorn every window, complementing the solid oak flooring, while the large loft room extension offers versatile living space.

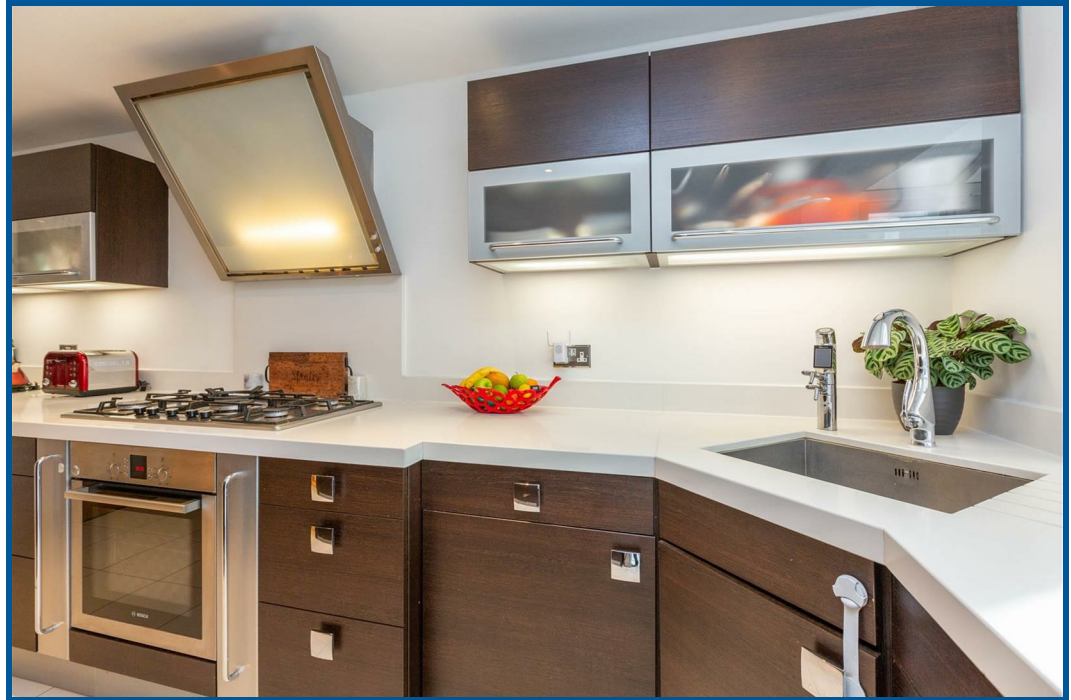
The heart of the home is the spacious kitchen diner, perfect for gatherings, complemented by a games room for entertainment. Enjoy the ambiance with wired speakers throughout the house and garden. The bedrooms feature fitted wardrobes, 100% wool carpets, and high-end porcelain tiling in the bathrooms.

Experience comfort with underfloor heating in the kitchen and bathrooms, part triple glazing, and wired ethernet in every room. The megaflo boiler system ensures pressurized unlimited hot water, while air conditioning in the conservatory and loft room adds a touch of luxury.

Outdoors, an electric garden heater enhances the experience. Located in the pleasant Tilekiln Close cul-de-sac, this home is within easy reach of local amenities, including the Brookfield Centre, shops, restaurants, and cafes in Goffs Oak or Cuffley Village. Transportation is a breeze with Cuffley overground station and various bus links, and Goffs School is nearby, making this property a truly exceptional family haven.

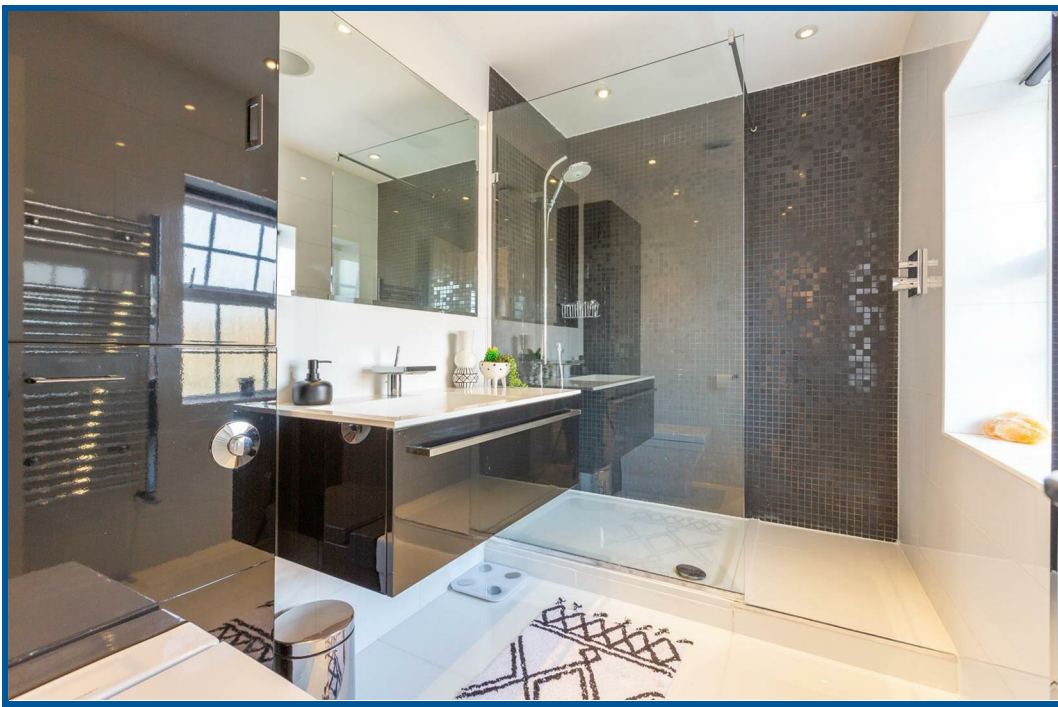
- **Chain Free**
- **Five Bedroom/Three Bathroom Detached Family Home**
  - **Master En-Suite Room**
  - **Walking Distance To GOFFS ACADEMY**
- **Underfloor Heating In Kitchen & Bathrooms**
  - **Close To Local Amenities**
  - **Large Loft Room Conversion**
- **Air Conditioning In Conservatory & Loft Room**
- **Wired Speakers Around The House**
  - **Megaflo Boiler System**











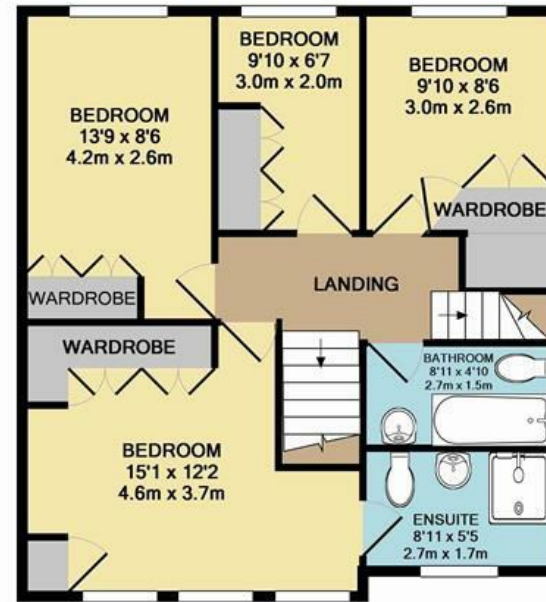




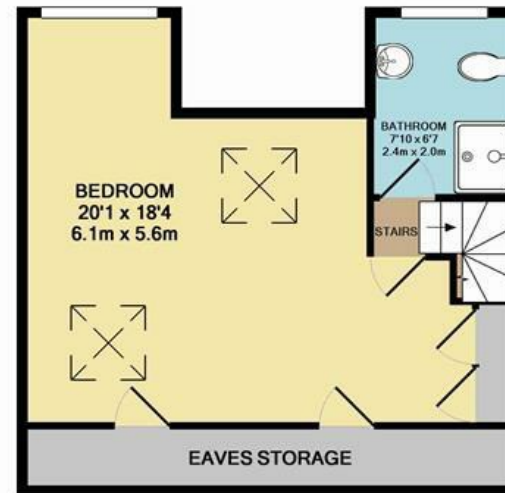




GROUND FLOOR  
APPROX. FLOOR  
AREA 782 SQ.FT.  
(72.7 SQ.M.)



1ST FLOOR  
APPROX. FLOOR  
AREA 603 SQ.FT.  
(56.0 SQ.M.)



2ND FLOOR  
APPROX. FLOOR  
AREA 428 SQ.FT.  
(39.7 SQ.M.)

TOTAL APPROX. FLOOR AREA 1813 SQ.FT. (168.4 SQ.M.)

Whilst every attempt has been made to ensure the accuracy of the floor plan contained here, measurements of doors, windows, rooms and any other items are approximate and no responsibility is taken for any error, omission, or mis-statement. This plan is for illustrative purposes only and should be used as such by any prospective purchaser. The services, systems and appliances shown have not been tested and no guarantee as to their operability or efficiency can be given  
Made with Metropix ©2016

