



JR Sales & Lettings

**Lordship Road  
Cheshunt**

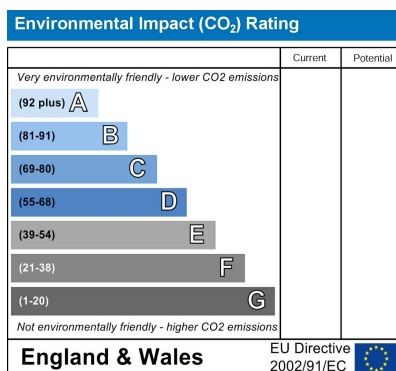
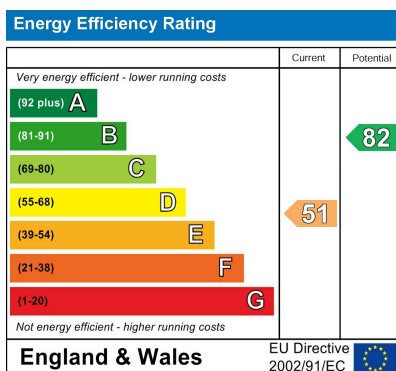


**£399,995  
Freehold**



Offered Chain Free is most attractive Victorian Three Bedroom End Of Terrace House. This spacious property is situation in this popular tree lined street in West Cheshunt & Features a Log Cabin Outbuilding. The property is in need of modernisation & has potential for a loft conversion (STPP). Close to local shops, Schools and 1.3Miles away from Cheshunt Train Station with fast trains to Tottenham Hale/Liverpool Street.

- Gas Heating
- Double Glazing
- Rear Garden
- Pine Log Cabin
- Three Bedrooms
- First Floor Bathroom
- Two Reception Rooms (could be open planned)
- Good Sized Kitchen/Dining Room
- Potential For Loft Conversion
- Chain Free



### Front Garden

Retaining wall. Path to:-

### Entrance

Opaque double glazed composite entrance door with side window to:-

### Porch

Ceramic tiled floor. Glazed hardwood sliding door to:-

### Reception 1

13'7 x 12'8 into the bay  
Double glazed bay window to front. Double radiator. Coal effect fire (Untested) with wooden surround and tiled hearth. Wooden flooring. Moulded coving to ceiling. Moulded ceiling rose. Wall lights.

### Inner Hallway

Stairs to first floor with timber balastrade. Meters under stairs. Doors to:-

### Reception 2

10'2 x 8'  
Double glazed window to the rear. Double radiator. Moulded coving to ceiling. Moulded ceiling rose.

### W.C.

Double glazed opaque window to the side. Plumbing for toilet (untested). Part tiled.

### Kitchen

15'11 x 8'  
Double glazed windows to the side and rear. Opaque double glazed door to the garden. Radiator.

### Split Level Landing

Wooden floor. Access to loft space. Storage cupboard housing immersion cylinder and Gas Boiler (untested). Doors to:-

### Main Bedroom

13'8 x 10'2  
Two double glazed windows to the front. Radiator. Wooden flooring.

### Bedroom 2

10'2 x 7'11  
Double glazed window to the rear. Double radiator. Laminate wooden flooring.

### Bedroom 3

10'4 x 6'3  
Double glazed window to the side. Wooden flooring.

### Bathroom

8'8 x 5'5  
Opaque double glazed window to the rear. Double radiator. Suite comprising W.C. with push button flush. Panel bath with shower over. Wash hand basin. Part tiled.

### Garden

Laid to lawn with shrub and flower borders. Side access. Patio area. Brick built shed.

### Summer House/Pine Log Cabin

12'2 x 8'11  
Window and double doors facing garden.

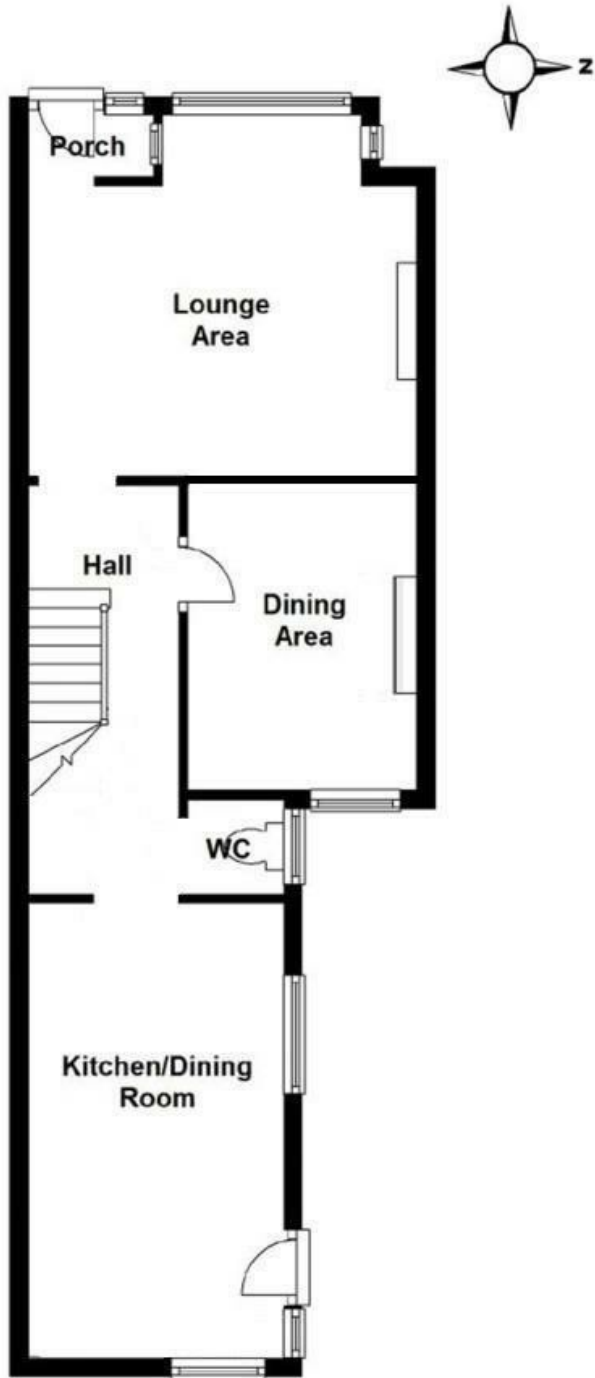








Ground Floor



First Floor

