



Clarkes

Estate Agents & Lettings Agents

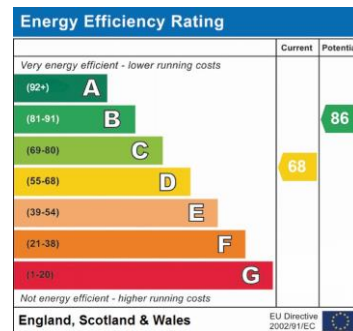
Asking Price
£600,000
Freehold

59 King Street, Arundel, BN18 9BN



Book a Viewing

01243 861344
Sales@ClarkesEstates.co.uk
27 Sudley Road, Bognor Regis, PO21 1EW
<http://www.clarkesestates.co.uk>



Follow us on  

IMPORTANT NOTICE
1: These particulars do not constitute part or all of an offer or contract. You should not rely on statements by Clarkes in the particulars as being factually accurate. Clarkes do not have authority to make representations about the property. 2: The measurements shown are approximate only. Potential buyers are advised to recheck the measurements before committing to travel or any expense. 3: Clarkes have not tested any apparatus, equipment, fixtures, fittings or services and buyers should check the working condition of any appliances. 4: Clarkes have not sought to verify the legal title of the property and the buyers must obtain verification from their solicitor. Any reference to alterations or use of any part of the property does not mean that any necessary planning, building regulations or other consent has been obtained.

Service you deserve. People you trust.

01243 861344



- Character End of Terrace Cottage
- Two Bedrooms
- Modern Kitchen
- Lounge & Dining Room
- Enclosed Courtyard Garden
- Outbuilding/Potential Home Office
- Views of Arundel Cathedral



Accommodation

- Lounge - 3.33m x 3.11m (10'11" x 10'2")
- Diner - 3.33m x 2.71m (10'11" x 8'10")
- Kitchen - 3.76m x 3.3m (12'4" x 10'9")
- Bedroom 2 - 3.71m x 2.47m (12'2" x 8'1")
- Courtyard - 8.5m x 5.19m (27'10" x 17'0")
- Studio - 3.03m x 2.14m (9'11" x 7'0")
- Utility - 2.14m x 1.86m (7'0" x 6'1")
- Bedroom 1 - 2.99m x 3.19m (9'9" x 10'5")
- Bathroom - 2.63m x 2.76m (8'7" x 9'0")

What the agent says... “ ”

Dating from somewhere around 1850 is this delightful, extended two-bedroom end of terrace cottage just a few meters from the Cathedral in the historic town of Arundel. Locally the cottage is affectionately known as 'The Stonemasons Cottage'.

Accessed via a short twitten off King Street, the accommodation comprises lounge with feature fireplace and log burner, diner, kitchen and bedroom 2 on the ground floor. Upstairs is the main bedroom and bathroom. The rear is a courtyard approximately 5m x 8m and leads on to a studio and utility building which has the potential to make a home office.

The main bedroom has views of the cathedral from its window, the bathroom is fitted with a traditional free-standing bath and matching suite. Hard floors create a clean ground floor space augmented by the extra room created in the extension which forms the kitchen and second bedroom. Of course, the property includes double glazing and gas central heating.

Outside the courtyard is laid to block paving, is fully enclosed and leads on to a slate tiled

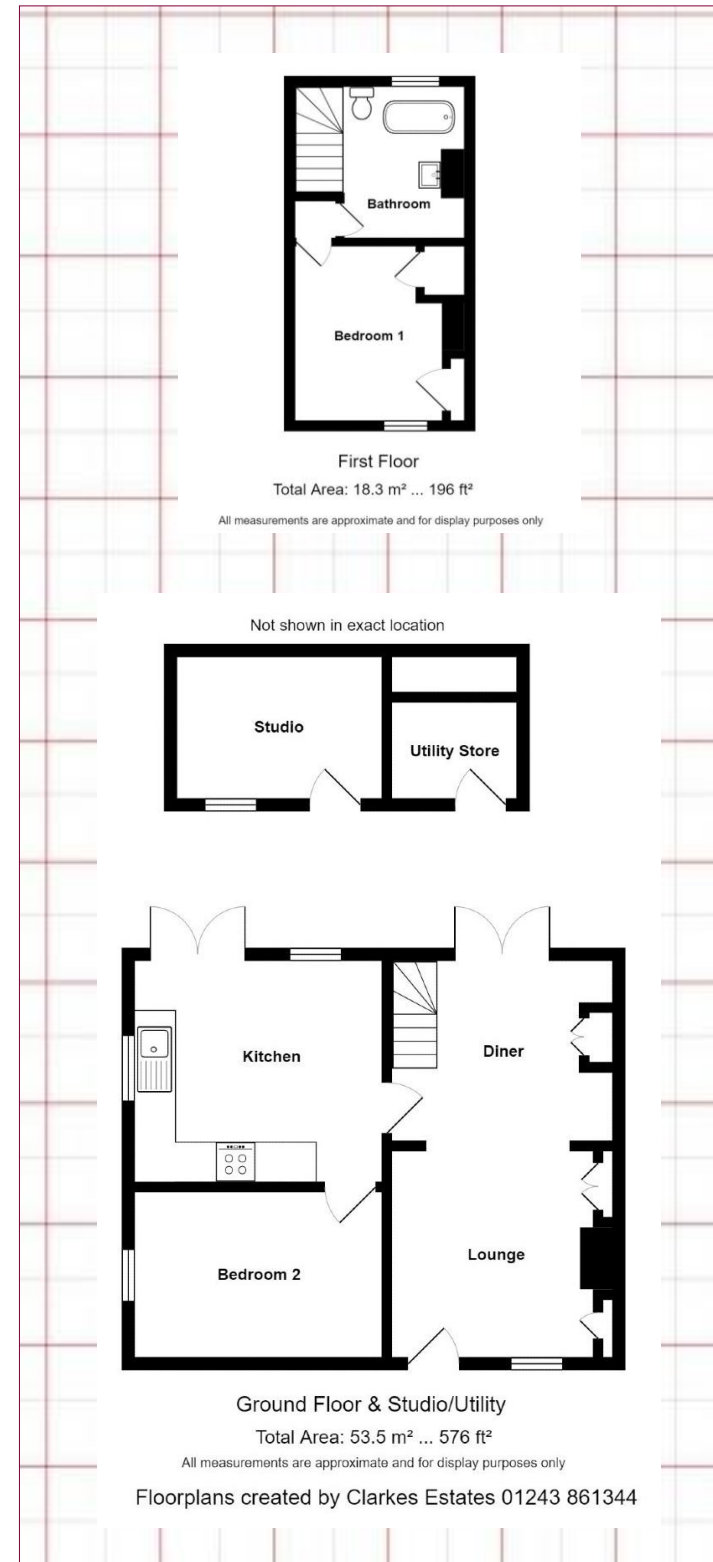
building that would suit use as a studio/office on one side, the other side is a utility with power, and water and drainage is already installed.

In our view this is the quintessential and quirky cottage that will delight those who love them. Viewings are highly recommended. There is no forward chain.

Material Information:

Council Tax: Arun District Council Band D
 Property Type: Purpose Built Cottage
 Property Construction: Standard
 Electricity, Water, Drainage Supply: Mains
 Heating: Gas Fired Central Heating
 Parking: On Road
 Restrictions: Conservation Area

Broadband Type: On 08/08/2024 the Ofcom Website <https://checker.ofcom.org.uk/en-gb/broadband-coverage> shows the area has Standard and Superfast available.
 Mobile Signal/Coverage: On 08/08/2024 the Ofcom Website <https://checker.ofcom.org.uk/> shows EE, Three, O2 and Vodafone Indoor as LIMITED and EE, Three, O2 and Vodafone Outdoor as LIKELY.



Access / How to find the Property: The entrance to the twitten is located directly opposite the Cathedral and adjacent to No 53 King Street. Pass through the gate and follow the twitten passage. The property is the house in the terrace at the rear.

