



## BROOKFIELD FARM WAY, WOODLANDS MEADOW

GUIDE PRICE – £899,950

- DISCOUNT OF £15,000 AVAILABLE
- NHBC AWARD WINNING DEVELOPMENT
- 3 STOREY 5 BEDROOM EXECUTIVE HOME
- TRADITIONALLY BUILT HOUSE
- VAST FAMILY ACCOMMODATION
- PAULA ROSA KITCHEN WITH FITTED APPLIANCES
- ROCA SANITARYWARE THROUGHOUT
- FITTED CARPETS AND WINDOW DRESSINGS
- PATIO AND TURFED GARDENS
- DETACHED DOUBLE GARAGE WITH DRIVEWAY

\*\*\*DISCOUNT OF £15,000 AVAILABLE\*\*\* The Balmoral house type at Woodlands Meadow has exceptional finishes and quality throughout. This impressive four double bedroom home benefits from three ensuites and a family bathroom. The Kitchen and breakfast room leads into the separate vaulted family room that in turn leads to the south facing garden. The remaining ground floor accommodation comprises of a large living room that boasts a bay window and stone fireplace, a formal dining room and a utility room from the kitchen with rear garden access, whilst the first floor offers a home office/ bedroom 5. Externally, plot 119 there is block paved parking for the whole family along with double garage. A large turfed rear garden with paved entertaining patio that is ideal to pass a summers evening with friends and family.







## Ground Floor

### Dining Room 3.64m x 3.31m (11'11" x 10'10")

A window to front with window dressings, fitted carpet, power points.

### Living Room 6.14m x 3.98m (20'2" x 13'1")

A large room featuring a window to front and twin doors to Vaulted Family Room. The focal point within the room is a quality stone fireplace with open gas flame fire. The room also benefits from TV and CAT 5 cabling points, fitted carpet and window dressings.

### Vaulted Family Room 3.89m x 3.60m (12'9" x 11'10")

Glazed to side aspects and with bi-folding doors leading to rear entertaining patio and garden beyond. Vaulted ceiling with ceiling lighting and Velux windows. Tiled flooring and hallway to:

### Kitchen Breakfast Room 6.75m x 3.64m (22'2" x 11'11")

A spacious Paula Rosa Manhattan fitted kitchen benefiting from quality integrated appliances and a range cooker. Matching island unit with breakfast bar. Stainless steel sink with mixer tap. Windows to side and rear aspects. Tiled flooring and door to:

### Utility Room 2.34m x 2.12m (7'8" x 6'11")

With matching fitted cupboards and worksurface keeping all the laundry appliances in one place. Under sunk sink unit with mixer tap, tiled flooring, door to rear garden.

### Cloakroom 2.14m x 1.36m (7'0" x 4'6")

Comprising Roca sanitaryware and built-in wash basin storage unit. Half tiled surround, window to side and tiled floor.

## 1st Floor

### Bedroom 1 - 4.33m x 3.98m (14'2" x 13'1")

With windows to front aspects, ceiling lighting, fitted carpet, opening to dressing area and door to:

### En-suite 3.98m x 1.73m (13'1" x 5'8")

Comprising a four-piece suite of an enclosed shower cubicle with an Aqualisa thermostatic control unit. Wash hand basin with storage cupboard under and touch lit mirror above. Panel enclosed bath with mixer tap and shower attachment. Close coupled WC. Chromium heated towel rail. Full tiled surround. Obscure window to rear.

### Bedroom 1 Dressing Area – 3.25m x 2.34m (10'8" x 7'8")

With window to front, fitted carpet and inset ceiling lighting.

### Bedroom 4 – 4.42m x 3.40m (14'6" x 11'2")

With windows to side and rear aspects, ceiling lighting and fitted carpet.

### Bathroom 2.54m x 2.26m (8'4" x 7'5")

A generously proportioned three-piece suite with Roca sanitaryware comprising a panel enclosed bath with mixer tap and shower attachment. Wash hand basin with integrated storage cupboard under. Close coupled WC. Chromium heated towel rail. Full tiled surround. Obscure window to side.

### Home Office / Bedroom 5 - 3.77m x 2.54m (12'4" x 8'4")

With window to front aspect, ceiling lighting and fitted carpet.

## 2nd Floor

### Bedroom 2 - 3.55m x 3.04m (11'8" x 10'0")

With dormer window to front. Ceiling lighting and fitted carpet. Door to:

### En-suite 3.94m x 1.76m (12'11" x 5'9")

Comprising an enclosed shower cubicle with an Aqualisa thermostatic control unit. Wash hand basin with integrated storage cupboard under. Panel enclosed bath with mixer tap and shower attachment. Close coupled WC. Chromium heated towel rail. Half tiled surround. Velux windows to rear.

### Bedroom 2 Dressing Area – 2.65m x 1.99m (8'8" x 6'6")

With dormer window to front, inset ceiling lighting and fitted carpet.

### Bedroom 3 - 3.55m x 3.04m (11'8" x 9'12")

With dormer window to front. Ceiling lighting and fitted carpet. Door to:

### En-suite 3.69m x 3.04m (12'1" x 10'0")

Comprising an enclosed shower cubicle with an Aqualisa thermostatic control unit. Panel enclosed bath with mixer tap and shower attachment. Wash hand basin with integrated storage cupboard under. Close coupled WC. Chromium heated towel rail. Half tiled surround. Velux window to rear.



# OUTSIDE

## Garden, Garage and Parking

The large south facing rear garden is fully turfed with an entertaining patio area. Path and personnel gate leading to driveway and further personnel door into the double garage that enjoys having power. The brindle block driveway is large enough for 4 average sized motor vehicles.



# DETAILS

EPC

TO FOLLOW...

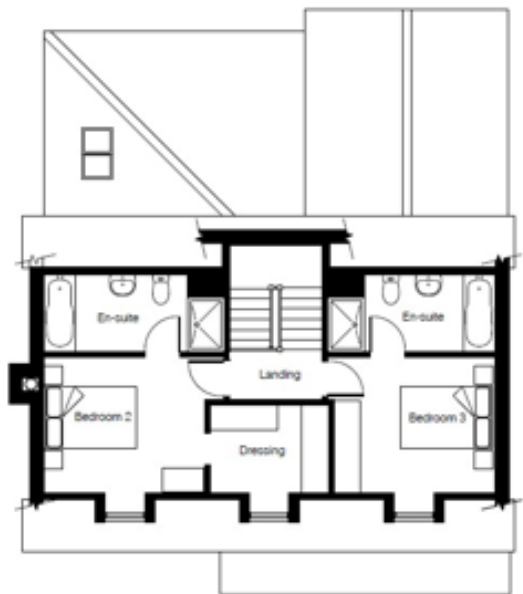
FLOOR PLAN



First Floor



Ground Floor



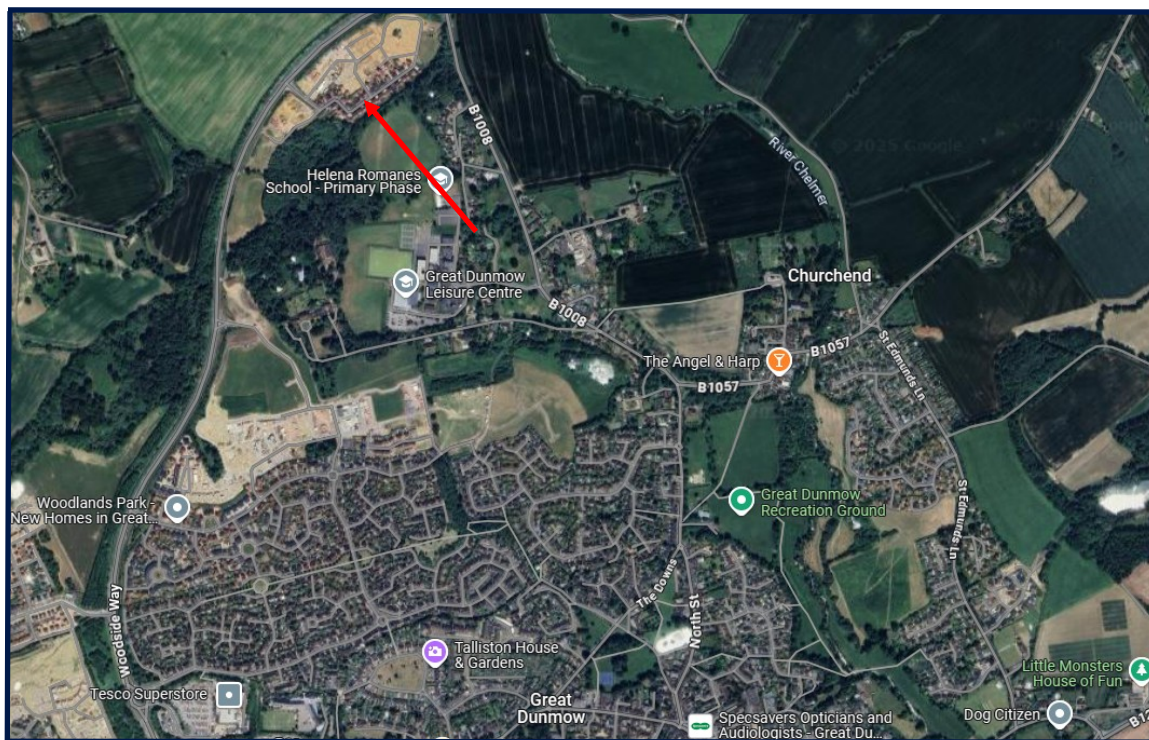
Second Floor



# GENERAL REMARKS & STIPULATIONS

Woodlands Meadow, on the edge of Great Dunmow, offers close access to schooling for both Junior and Senior year groups, boutique shopping and recreational facilities. Woodlands Meadow is a short drive away from the mainline railway station at Bishop's Stortford which serves London Liverpool Street, Cambridge and Stansted Airport, also the M11 and M25 motorways are only a short drive via the A120, giving easy onward access to London and the North.

## DIRECTIONS



## FULL PROPERTY ADDRESS

Plot 119 Balmoral, Brookfield Farm Way,  
Woodlands Meadow, Great Dunmow, Essex,  
CM6 1XZ

## COUNCIL TAX BAND

TBC

## SERVICES

Gas fired central heating, mains drainage and

## LOCAL AUTHORITY

Uttlesford District Council, London Road, Saffron  
Walden, CB11 4ER

**AGENTS NOTE:** We believe that the information supplied in this brochure is accurate as of the date 17/06/2025. The information given in these particulars is intended to help you decide whether you wish to view this property and to avoid wasting your time in viewing unsuitable properties. We have tried to make sure that these particulars are accurate, but to a large extent we have to rely on what the seller tells us about the property. We do not check every single piece of information ourselves as the cost of doing so would be prohibitive and we do not wish to unnecessarily add to the cost of moving house. In accordance with the misrepresentation act, we are required to inform both potential vendors and purchasers, that from time to time both vendors and or purchasers, may be known by our staff, by way of previous customers, friends, neighbours, relatives, etc. Once you find the property you want to buy, you will need to carry out more investigations into the property than it is practical or reasonable for an estate agent to do when preparing sales particulars. For example, we have not carried out any kind of survey of the property to look for structural defects and would advise any homebuyer to obtain a surveyor's report before exchanging contracts. If you do not have your own surveyor, we would be pleased to recommend one. We have not checked whether any equipment in the property (such as central heating) is in working order and would advise homebuyers to check this. You should also instruct a solicitor to investigate all legal matters relating to the property (e.g. title, planning permission etc.), as these are specialist matters in which estate agents are not qualified. Your solicitor will also agree with the seller what items (e.g. carpets, curtains etc.) will be included in the sale.

# PESTELL & Co

ESTABLISHED 1991

ESTABLISHING OURSELVES AS LEADING LOCAL AGENTS FOR OVER 33 YEARS!



WE HAVE IT COVERED, DON'T HESITATE TO CONTACT ONE OF OUR EXPERIENCED TEAM FOR FURTHER INFORMATION!

Would you like a free home valuation?

Want to change agent and get your property sold?

Do you have a property that you would like to rent but uncertain how to go about it?

Interested in Land acquisition?

Do you have a commercial property to sell or let?

Are you a developer looking for an agent to market or value your site?