

HILLIER & WILSON



Bartholomew Court, Bartholomew Street, Newbury, RG14 5HF

Bartholomew Street Newbury

A two bedroom first floor apartment located just a stone's throw from Newbury town centre. The property is ideal for first time or investment buyers and benefits from uPVC double glazing, electric heating and an allocated parking space. The accommodation comprises entrance hall, sitting/dining room with Juliette balcony, kitchen, two double bedrooms (one of which has fitted wardrobes) and a bathroom. Externally there is an allocated parking which is clearly numbered. To the rear of the building is a communal garden. Bartholomew Court is ideally located in Newbury town centre just a short walk from the mainline railway station which provides regular direct links to London Paddington taking less than an hour. NO ONWARD CHAIN





- TWO BEDROOM FIRST FLOOR APARTMENT
- IDEAL FOR FIRST TIME OR INVESTMENT BUYERS
- LOCATED A STONES THROW FROM TOWN CENTRE
- SITTING/DINING ROOM WITH JULIETTE BALCONY
- PRIVATE ENTRANCE & ALLOCATED PARKING
- NO ONWARD CHAIN

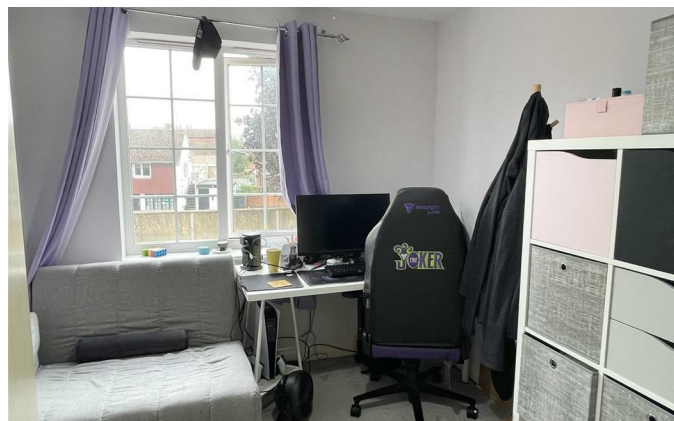
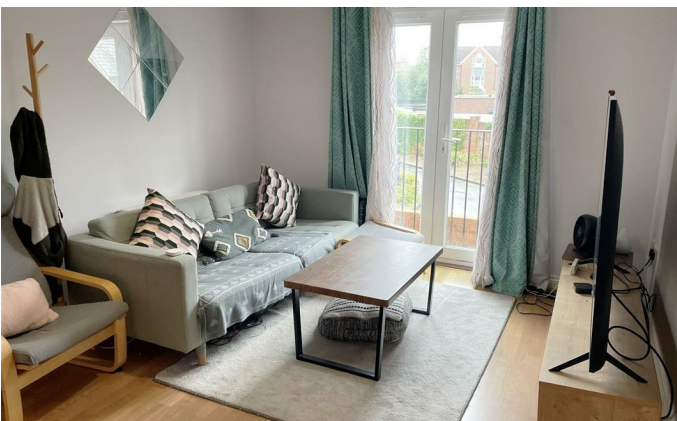
Services:

Mains services are connected
(Except gas) (Service charges apply)

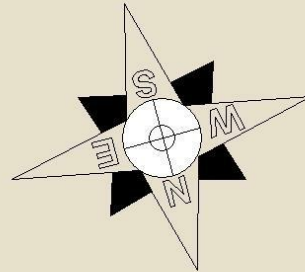
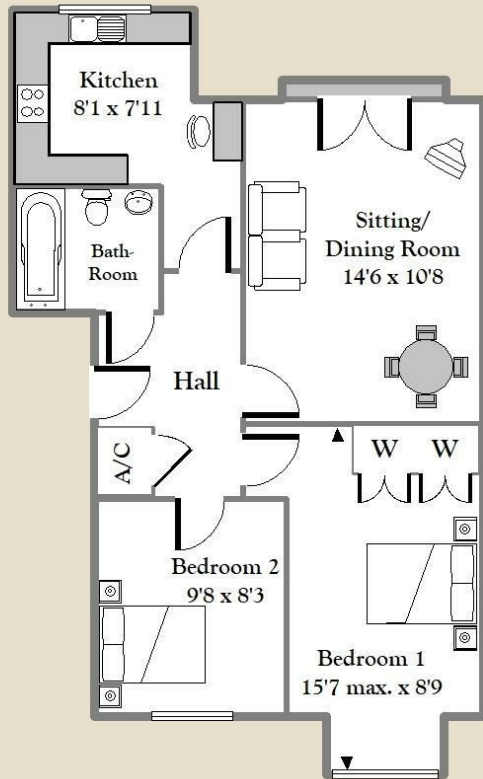
EPC: Rating C

Full results can be sent on request

Council Tax: Band C



Bartholomew Court Bartholomew Street



APPROX. GROSS INTERNAL
FLOOR AREA 586 sq.ft. (54 sq.m)
For identification only Not to scale
Hillier & Wilson LTD



Hillier & Wilson wish to inform prospective purchasers that we have listed the details of this property as a general guide and in good faith. We have not carried out a detailed survey nor tested the services, appliances or specific fittings. Any reference to alterations does not mean that any planning permission, building regulation or other consent has been obtained. Investigations must be made by buyer's solicitor. Room sizes should not be relied upon for carpets and furnishings. Fixtures & fittings are excluded from the property unless stated in the sales particulars.