

## OFFICE HOURS:

Monday to Friday	9 am	to	5 pm
Saturday	9 am	to	2 pm
Sunday and Bank Holidays	12 noon	to	2 pm



## 10 good reasons to choose DMA

- \* *Open 7 days a week.*
- \* *Filey's longest established family run independent estate agency.*
- \* *Prompt efficient friendly service.*
- \* *360° virtual tours and floor plans.*
- \* *Free advertising: no sale - no charge.*
- \* *Free no obligation market valuation.*
- \* *Free accompanied viewing.*
- \* *Dedicated sales progression.*
- \* *Prominent town centre location.*
- \* *Modern walk-round self selection display.*

RESIDENTIAL  
SALES

**DMA** ESTATE  
AGENTS

COMMERCIAL  
SALES

Proprietors: **David Mansfield ATTON** FNAEA.  
**Samantha ADDISON**  
[www.dmaestateagents.co.uk](http://www.dmaestateagents.co.uk)  
ESTABLISHED 1992



These particulars are intended only to give a fair description of the property, as a guide to prospective buyers. Accordingly a) their accuracy is not guaranteed and neither DMA Estate Agents nor the vendor(s) accept any liability in respect of their contents; b) they do not constitute an offer or contract of sale, and c) any prospective purchaser should satisfy themselves by inspection or otherwise as to the correctness of any statement or information in these particulars.

# DMA

ESTATE  
AGENTS



23 WRANGHAM DRIVE, HUNMANBY YO14 0PZ



Freehold £345,000

### FEATURES

- \* **Characterful family home recently built to a very high standard.**
- \* Individual three bedroom detached house.
- \* Located in a cul-de-sac in this popular large village.
- \* Upvc double glazing.
- \* Gas central heating to radiators on the first floor and underfloor heating to the ground floor.
- \* Modern open plan breakfast kitchen.
- \* Ground floor wc.
- \* Ensuite to master bedroom.
- \* Wide drive to garage.
- \* Enclosed rear garden.
- \* **EPC Rating: B.**
- \* Viewing is very highly recommended.

### ACCOMMODATION IN BRIEF

GROUND FLOOR: Front Door to Entrance Hall. Separate WC. Lounge.  
Dining Kitchen.  
FIRST FLOOR: Three bedrooms (one with en-suite). Bathroom.  
OUTSIDE: Drive to garage. Rear garden.

26 Belle Vue Street, FILEY, North Yorks. YO14 9HY. Telephone: 01723 515527  
[www.dmaestateagents.co.uk](http://www.dmaestateagents.co.uk) / [www.rightmove.co.uk](http://www.rightmove.co.uk)



23 WRANGHAM DRIVE, HUNMANBY

**Composite Front Door to:**

**ENTRANCE HALL**

Understairs cupboard. Tiled floor with underfloor heating. Upvc double glazed window with integral blinds.



**SEPARATE WC**

Handbasin and wc. Tiled floor with underfloor heating. Cupboard housing gas combination boiler. Upvc double glazed window.

**LOUNGE**

**4.97m x 4.95m (16'4" x 16'3")**

Feature brick fireplace. Tiled floor with underfloor heating. Exposed beamed ceiling. Three upvc double glazed windows with integral blinds. *Upvc patio doors to garden.*



*/ continued over*



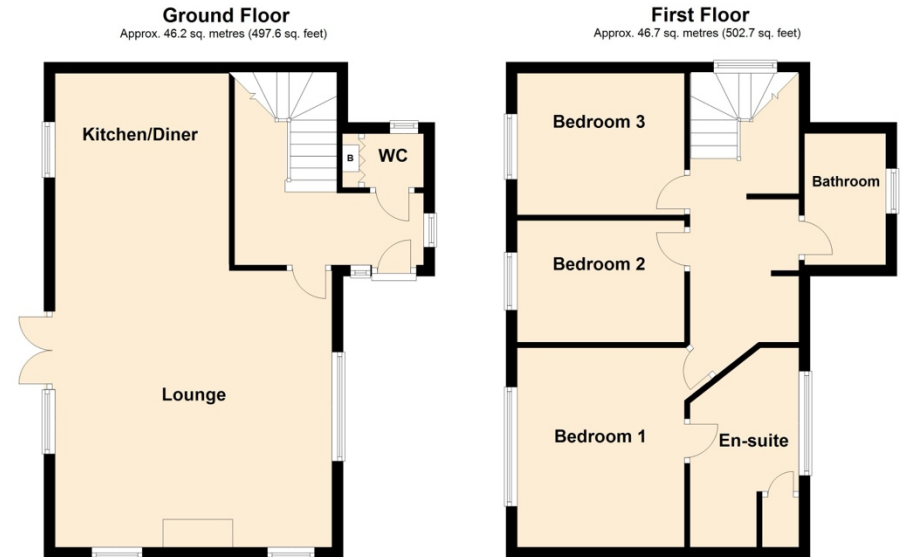
**Open to:**

**BREAKFAST KITCHEN**  
**3.42m x 3.12m (11'3" x 10'3")**

White enamel sink. Good range of modern base cupboards with worktops over. Matching wall cupboards. Gas range oven with extractor hood over. Integrated 'fridge / freezer and dishwasher. Large breakfast bar. Exposed beamed ceiling. Inset spotlights. Tiled floor with underfloor heating. Upvc double glazed window.



**Floor Plan:**



Total area: approx. 92.9 sq. metres (1000.2 sq. feet)

Please note this floorplan is a guide and not to scale.  
Plan produced using PlanUp.

**23 Wrangham Drive, Hunmanby**



**Council Tax Band**      **D.**

**LOCATION:**

Hunmanby is a large village three miles inland from Filey and nine miles from both Scarborough and Bridlington. The village offers a wide range of shops, chemist, doctors' surgery, solicitors' office, dentists, optician, community centre, sub Post Office, Primary School, two churches, a sports and social club together with both bus and train services.

**DIRECTIONS:**

From the DMA office take the Bridlington road out of Filey. After the Royal Oak crossing turn right (signposted Hunmanby). Follow the signs into Hunmanby village itself. As you enter the village take the first turning on the right onto Outgaits Lane and Wrangham Drive is the first turning on the left the fork right at the top. The property is located on the left hand side on the corner.

**FIRST FLOOR:**

**LANDING**

Large storage cupboard. Inset spotlights. Upvc double glazed window on the half landing.



**BATHROOM**

Shower bath with mixer shower and screen. Handbasin in vanity unit and wc with concealed cistern. Chrome ladder radiator. Inset spotlights. Extractor fan. Upvc double glazed window.



**Viewing strictly by appointment only through DMA Estate Agents**

*/ continued over*

### BEDROOM ONE

**3.30m x 2.76m plus wardrobes**  
(10'10" x 9'1" plus wardrobes)

Built-in wardrobes with sliding doors plus further built-in cupboards. Radiator. Upvc double glazed window.



### ENSUITE

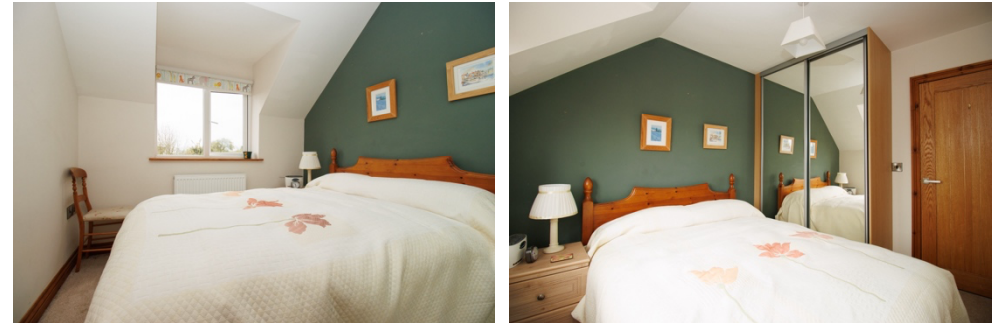
Shower cubicle with mixer shower. Handbasin and wc. Built-in cupboard. Inset spotlights. Chrome ladder radiator. Upvc double glazed window.



### BEDROOM TWO

**3.14m x 2.54m (10'4" x 8'4")**

Fitted wardrobes with sliding mirror doors. Radiator. Upvc double glazed window.



### BEDROOM THREE

**3.12m x 2.18m (10'3" x 7'2")**

Radiator. Upvc double glazed window. ***Loft access to boarded loft.***



### ***OUTSIDE:***

Drive to **GARAGE**. Enclosed rear garden.

*/ continued over*