

## OFFICE HOURS:

Monday to Friday	9 am	to	5 pm
Saturday	9 am	to	2 pm
Sunday and Bank Holidays	12 noon	to	2 pm



## 10 good reasons to choose DMA

- \* *Open 7 days a week.*
- \* *Filey's longest established family run independent estate agency.*
- \* *Prompt efficient friendly service.*
- \* *360° virtual tours and floor plans.*
- \* *Free advertising: no sale - no charge.*
- \* *Free no obligation market valuation.*
- \* *Free accompanied viewing.*
- \* *Dedicated sales progression.*
- \* *Prominent town centre location.*
- \* *Modern walk-round self selection display.*

RESIDENTIAL  
SALES

**DMA** ESTATE  
AGENTS

COMMERCIAL  
SALES

Proprietors: **David Mansfield ATTON FNAEA.**  
**Samantha ADDISON**

[www.dmaestateagents.co.uk](http://www.dmaestateagents.co.uk)

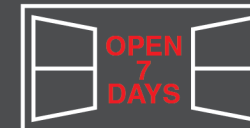
ESTABLISHED 1992



These particulars are intended only to give a fair description of the property, as a guide to prospective buyers. Accordingly a) their accuracy is not guaranteed and neither DMA Estate Agents nor the vendor(s) accept any liability in respect of their contents; b) they do not constitute an offer or contract of sale, and c) any prospective purchaser should satisfy themselves by inspection or otherwise as to the correctness of any statement or information in these particulars.

# DMA

ESTATE  
AGENTS



168 SCARBOROUGH ROAD, FILEY YO14 9NJ



Freehold £395,000

### FEATURES

- \* Stone built four bedroom detached bungalow.
- \* Built in 1976 by 'Adams' a local stonemason.
- \* Gas central heating to radiators.
- \* Upvc double glazed windows and upvc facias.
- \* Separate formal dining room.
- \* Integral garage.
- \* Conservatory.
- \* Extensive gardens front, side and rear.
- \* Viewing is highly recommended.

### ACCOMMODATION IN BRIEF

GROUND FLOOR: Front Door to Entrance Porch. Door to Entrance Hall. Lounge. Inner Hall. Dining Room. Kitchen. Utility Room. Rear Porch. Conservatory. Shower Room. Separate wc. Two Bedrooms.

FIRST FLOOR: Two Bedrooms. Bathroom. Large Loft Room.

OUTSIDE: Gardens front, side and rear. Drive to integrated garage.

26 Belle Vue Street, FILEY, North Yorks. YO14 9HY. Telephone: 01723 515527  
[www.dmaestateagents.co.uk](http://www.dmaestateagents.co.uk) / [www.rightmove.co.uk](http://www.rightmove.co.uk)

168 SCARBOROUGH ROAD, FILEY

**Front Door to:**

**ENTRANCE PORCH**

Radiator. Upvc double glazed windows.



**Door to:**

**ENTRANCE HALL**

Large storage cupboard. Radiator.



**LOUNGE**

**5.41m x 4.52m (17'9" x 14'10")**

Gas fire point. Electric fire in stone surround. Side lights. Radiator. Upvc double glazed bow window. Upvc side window. Porthole stained glass window.



**Floor Plan:**



Total area: approx. 210.1 sq. metres (2261.5 sq. feet)  
Please note this floorplan is a guide and not to scale.  
Plan based on aerial imagery.  
168 Scarborough Road, Filey



168 Scarborough Road, Filey



**Council Tax Band**      **F.**

**DIRECTIONS:**

From the DMA office proceed left along Belle Vue Street. Follow the one-way system round turning left onto Station Avenue. Turn right at the roundabout and follow the road to Scarborough. The property is situated on the right hand side.

**Viewing strictly by appointment only through DMA Estate Agents**

**Stained glass door from hall to:**

**DINING ROOM**

**3.12m x 4.01m (10'3" x 13'2")**

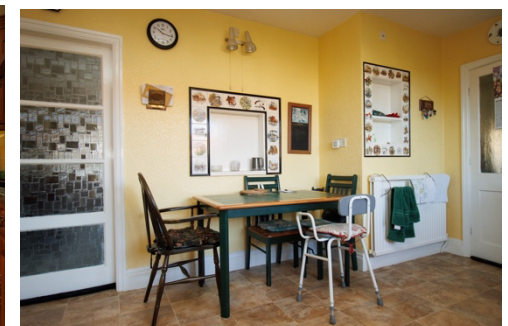
Radiator. Upvc double glazed bow window.



**KITCHEN**

**3.58m x 4.36m (11'9" x 14'4")**

Inset stainless steel sink and drainer. Oak effect base cupboards with worktops over. Matching wall cupboards. Built-in oven. Gas hob with extractor hood over. Tiled floor. Radiator. Upvc double glazed window.



*/ continued over*



168 Scarborough Road, Filey

### UTILITY ROOM

1.85m x 2.79m (6'1" x 9'2")

Inset stainless steel sink and drainer. Base cupboards. Gas boiler. Plumbing for automatic washing machine. Tiled floor. Upvc double glazed window.



**Door to:**



### REAR PORCH

1.34m x 3.55m (4'5" x 11'8")

Tiled floor. Radiator. Upvc double glazed windows. *Upvc rear door.*



### SHOWER ROOM

Shower cubicle with mixer shower. Handbasin. Part tiled walls. Radiator. Upvc double glazed window.



/ continued over



168 Scarborough Road, Filey

**Door to:**

**LOFT ROOM**  
**5.08m long (16'8" long)**

Porthole window.



**SEPARATE WC**

*Loft access.* Upvc double glazed window.



**BEDROOM ONE**

**2.71m x 4.24m (9'11" x 13'11")**

Radiator. Upvc double glazed window.



**BEDROOM TWO / STUDY**

**3.12m x 4.24m (10'3" x 13'11")**

Radiator. Upvc double glazed window. *Upvc double glazed door to:*



*/ continued over*



**OUTSIDE:**

Front garden. Drive to integrated **GARAGE 2.99m x 4.67m (9'10" x 15'4")**. Side and rear garden. **GREENHOUSE. SHED.**





168 Scarborough Road, Filey

**CONSERVATORY**

**3.83m x 3.63m (12'7" x 11'11")**

Upvc double glazed windows.



*Stairs to:*

**FIRST FLOOR:**

**LANDING**

Airing cupboard housing immersion heater. 'Velux' window.



**BEDROOM FOUR**

**5.10m x 3.65m (16'9" x 12'0")**

Radiator. Upvc double glazed window.



**BATHROOM**

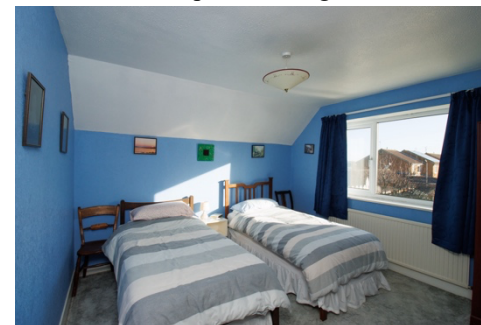
Bath, handbasin and wc. Part tiled walls. Radiator. 'Velux' window.



**BEDROOM THREE**

**3.42m x 3.65m (11'3" x 12'0")**

Radiator. Upvc double glazed window.



*/ continued over*