



18 Coppicewood Court

Balby, Doncaster, DN4 8SF

Asking Price **£365,000**

Located at the head of the close, on a good sized, secluded plot, a larger style detached family home, with double garage and ample further parking. The extensive accommodation briefly comprises of; reception hall, cloaks / WC, utility room, 3 reception rooms, 'L' shaped breakfast kitchen with a range of integrated appliances. First floor; 2 generous en suite bedrooms, 2 further bedrooms and house bathroom.

Outside; to the rear is a substantial summer house, currently used as a 'man cave' with power and lighting.

Low maintenance rear plot, with private seating and patio areas.

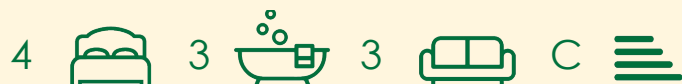
Extensive block paved area to the front, providing parking for numerous vehicles. Detached, brick built, double garage.

A fine family home, on a great plot, where viewing is advised.

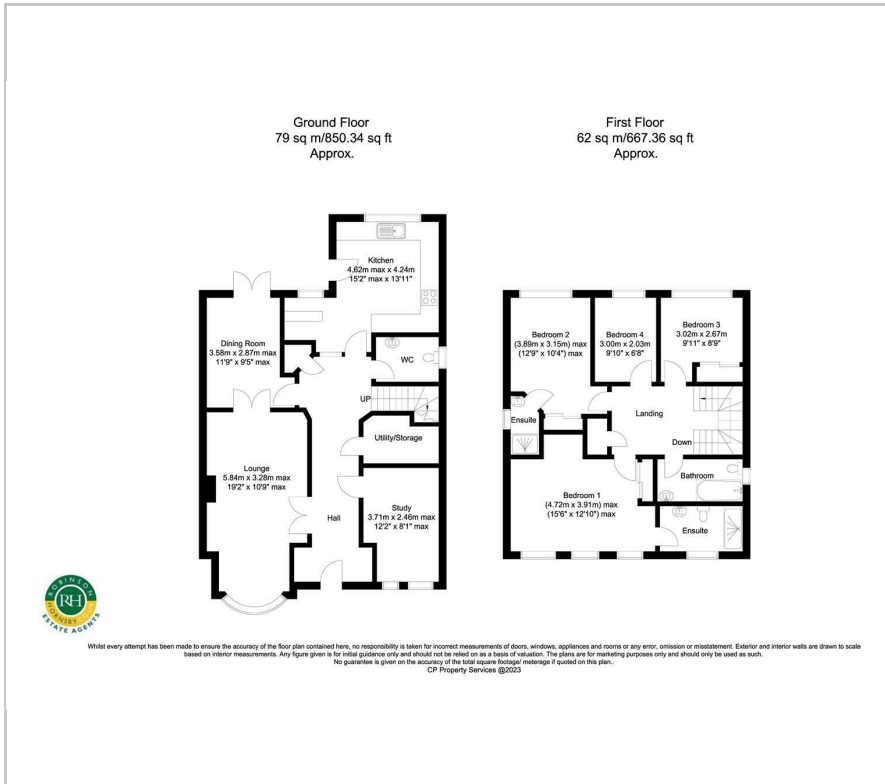
- large family home on secluded plot
- ever popular residential development
- close to a host of amenities including major supermarkets
- easy motorway access
- 4 bedrooms / 3 bath - shower rooms
- 3 generous reception rooms
- EV charging point, extensive parking, double garage
- low maintenance, private plot
- large summer house
- viewing advised

Viewing

Please contact our Office on 01302 751616 if you wish to arrange a viewing appointment for this property or require further information.



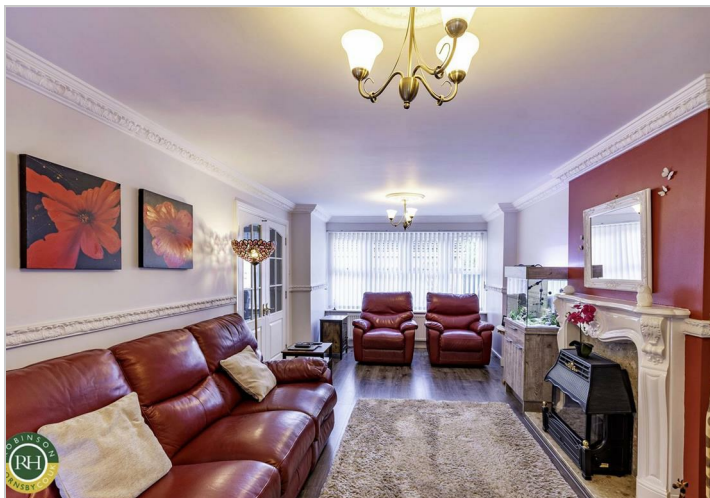
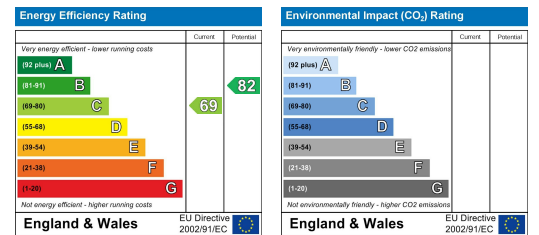
Floor Plan



Area Map



Energy Efficiency Graph



These particulars, whilst believed to be accurate are set out as a general outline only for guidance and do not constitute any part of an offer or contract. Intending purchasers should not rely on them as statements of representation of fact, but must satisfy themselves by inspection or otherwise as to their accuracy. No person in this firm's employment has the authority to make or give any representation or warranty in respect of the property.