



## 55 Hesley Road

Harworth, Doncaster, DN11 8JU

### Asking Price £185,000

Enjoying a most popular and convenient location, whilst offering excellent accommodation for a young family or first time buyer, this 3 bedroom semi detached house is offered for sale with 'no chain' and is well presented throughout. Briefly comprises; hall with access to WC. Lounge, fitted rear dining kitchen with access to the gardens. First floor provides 3 bedrooms and contemporary styled bathroom. Outside; enclosed rear gardens, with private patio area and off road parking. Well positioned for accessing local supermarkets (within walking distance) as well as the A1 motorway at Blyth.

- Semi Detached House
- 3 Bedrooms two doubles and one single
- Bathroom with shower over bath , WC and basin
- Large living room
- Modern kitchen diner
- Two off road parking spaces
- Private rear garden
- Easy access to local shops and supermarkets

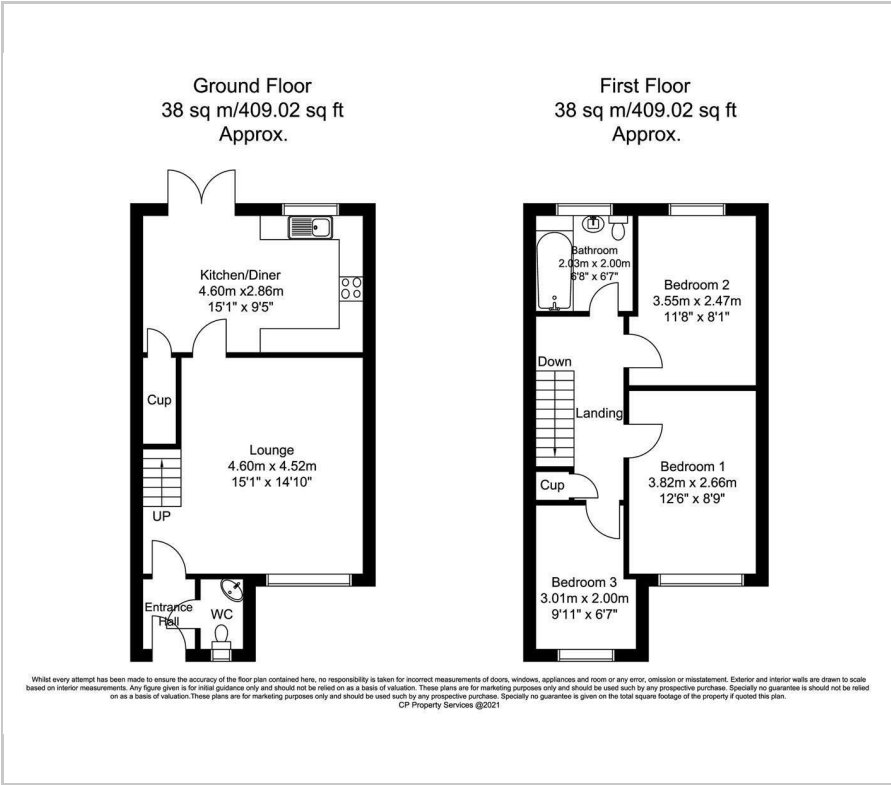
### Viewing

Please contact our Office on 01302 751616 if you wish to arrange a viewing appointment for this property or require further information.





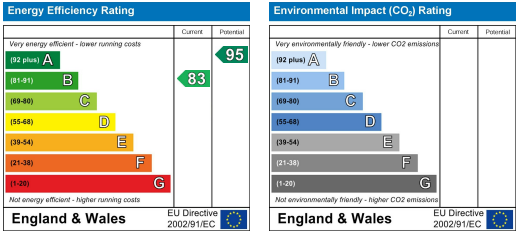
Floor Plan



Area Map



Energy Efficiency Graph



These particulars, whilst believed to be accurate are set out as a general outline only for guidance and do not constitute any part of an offer or contract. Intending purchasers should not rely on them as statements of representation of fact, but must satisfy themselves by inspection or otherwise as to their accuracy. No person in this firms employment has the authority to make or give any representation or warranty in respect of the property.