



## 10 Croft Drive.

Tickhill, Doncaster, DN11 9UL

Asking Price £575,000

Ideally located on a small, select cul de sac, close to central Tickhill, a particularly well presented detached family home, with double garage and plenty of further parking.

Briefly comprises; reception hall, cloaks / WC, formal lounge with open plan access to the dining room. Separate sitting room / study off which is the rear conservatory. Fitted breakfast kitchen having 'Range' style cooker, and integrated dishwasher. Separate utility room.

The first floor provides 4 bedrooms, each with built in wardrobes, the Master having en suite shower room and walk in wardrobe.

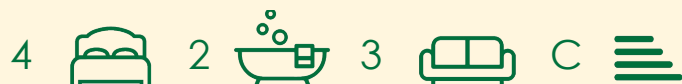
Outside; most attractive, well enclosed rear gardens, enjoying a high degree of privacy, private patio area. Large, secluded front garden with further seating area.

Driveway leads to double garage, featuring twin remote doors.

- well presented family home in highly sought after setting
- comfortable walk into central Tickhill, with its wide range of amenities
- 4 bedrooms, 3 reception rooms and conservatory
- built in wardrobes to all bedrooms, en suite shower room to master
- positioned on a select cul de sac
- delightful, private gardens extend to both front and rear
- double garage with twin remote doors
- an early viewing is advised

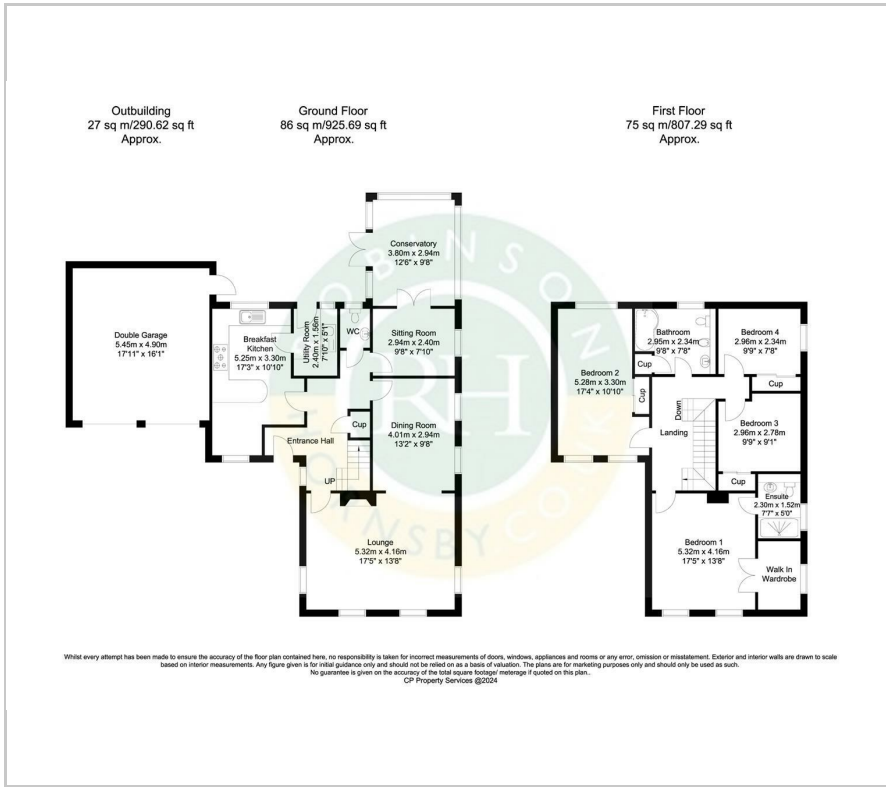
### Viewing

Please contact our Office on 01302 751616 if you wish to arrange a viewing appointment for this property or require further information.





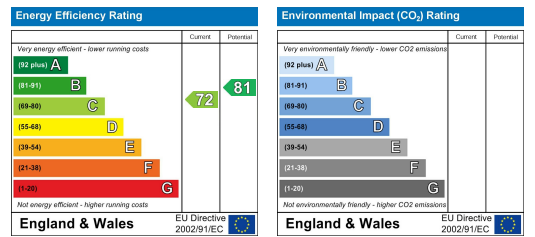
# Floor Plan



# Area Map



# Energy Efficiency Graph



These particulars, whilst believed to be accurate are set out as a general outline only for guidance and do not constitute any part of an offer or contract. Intending purchasers should not rely on them as statements of representation of fact, but must satisfy themselves by inspection or otherwise as to their accuracy. No person in this firm's employment has the authority to make or give any representation or warranty in respect of the property.