



10 Malton Road

Scawsby, Doncaster, DN5 8SG

Offers Around £140,000

Offered for sale with NO ONWARD CHAIN and occupying an enviable corner plot is this three bedroom, semi-detached property in popular village of Scawsby. The surrounding location will provide you with a wealth of amenities including nearby schooling, shops, supermarkets and also sits on great commuting links in and out of Doncaster. The property in brief comprises; entrance hallway, lounge, kitchen/dining room, three bedrooms and family bathroom with white suite. Outside; front, side and rear gardens and off road parking for several vehicles. The property is priced to allow for further modernisation and offers plenty of scope for extension (subject to planning consent). An ideal property for the first time or investment buyer and must be viewed.

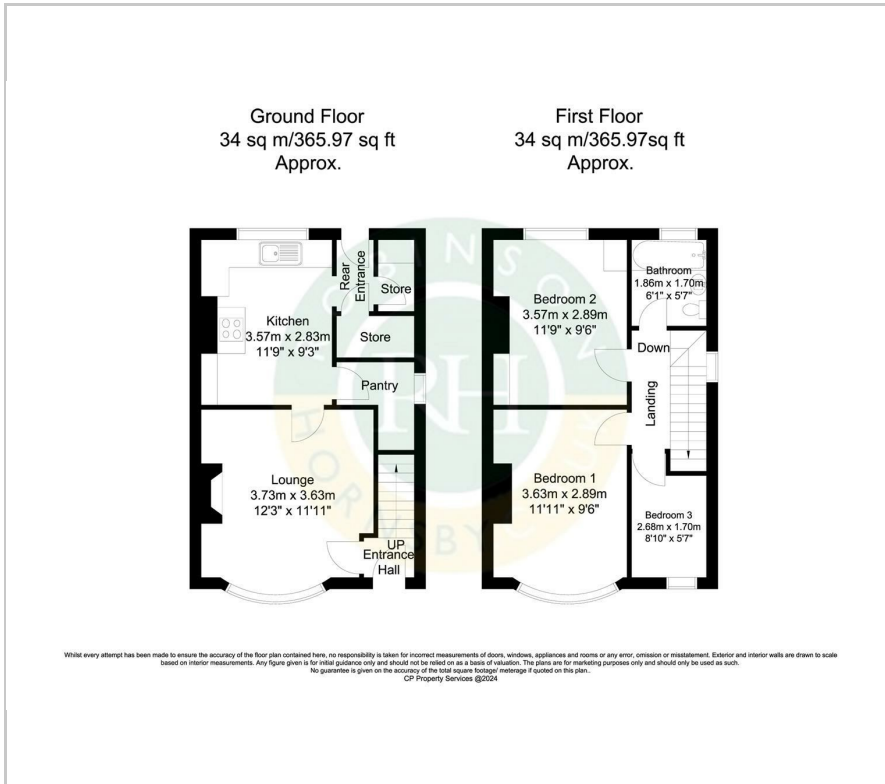
- Traditional semi detached house
- Three Bedrooms
- Enviably corner plot
- Kitchen/breakfast room
- Family bathroom with white suite
- Priced to allow for further modernisation
- Close to local amenities and reputable schools
- No onward chain
- Scope for extension (subject to planning)
- Must be viewed

Viewing

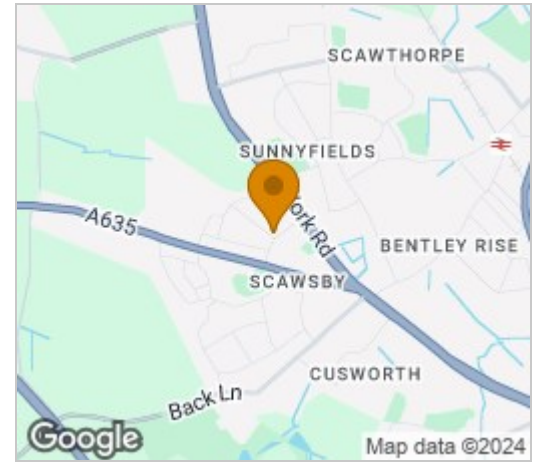
Please contact our Office on 01302 751616 if you wish to arrange a viewing appointment for this property or require further information.



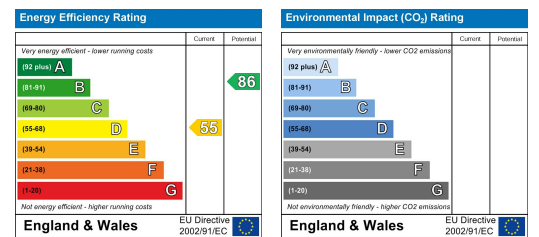
Floor Plan



Area Map



Energy Efficiency Graph



These particulars, whilst believed to be accurate are set out as a general outline only for guidance and do not constitute any part of an offer or contract. Intending purchasers should not rely on them as statements of representation of fact, but must satisfy themselves by inspection or otherwise as to their accuracy. No person in this firm's employment has the authority to make or give any representation or warranty in respect of the property.