



65 Fiddlers Drive

Armthorpe, Doncaster, DN3 3TS

Price Guide £210,000

GUIDE PRICE £210,000 - £220,000

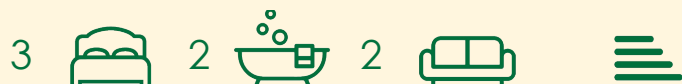
Situated in a peaceful cul-de-sac, this charming semi-detached house located on Fiddlers Drive in the desirable area of Armthorpe, Doncaster. This property has been tastefully decorated to a high standard and boasts a spacious open plan kitchen diner, living room, master bedroom with en suite, a further two bedrooms and family bathroom. To the outside; driveway and low maintenance garden to the front, with side access leading to a landscaped, well maintained rear garden.

Located in a highly sought after estate, the property gives easy access to the town centre, motorway links and excellent local amenities.

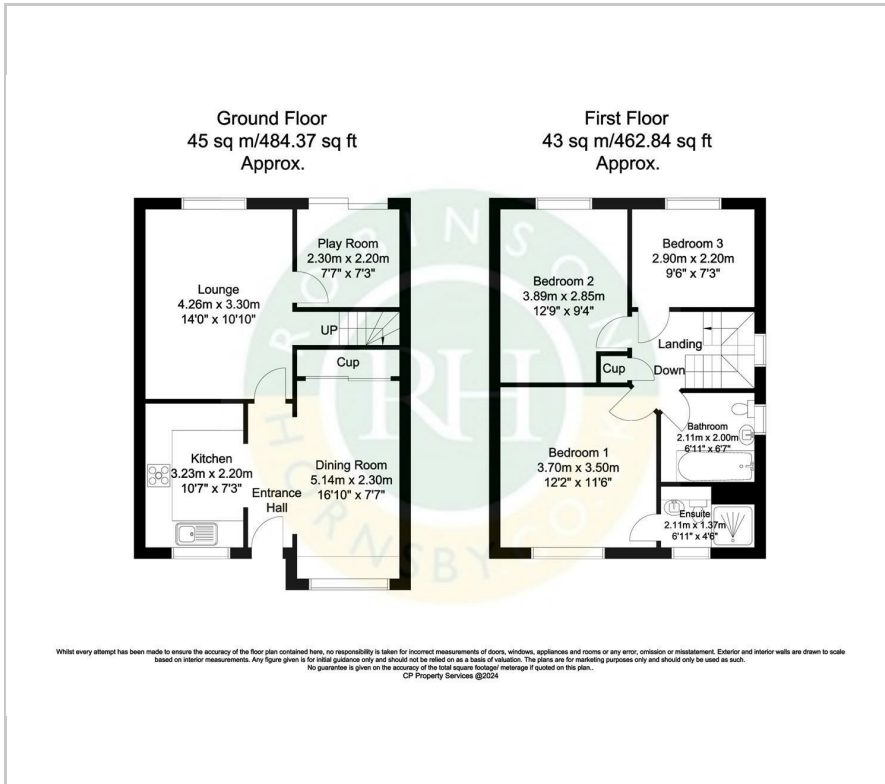
- Semi Detached
- Three Bedrooms
- Open plan kitchen diner
- En Suite
- Gas central heating
- Double Glazing
- Driveway
- Council Tax Band B
- Cul-de-sac location
- Freehold

Viewing

Please contact our Office on 01302 751616 if you wish to arrange a viewing appointment for this property or require further information.



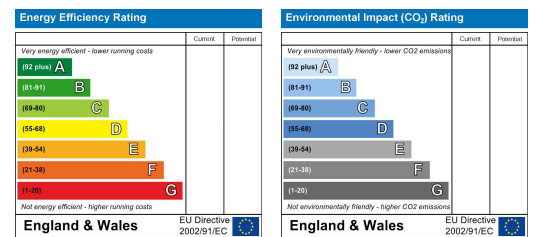
Floor Plan



Area Map



Energy Efficiency Graph



These particulars, whilst believed to be accurate are set out as a general outline only for guidance and do not constitute any part of an offer or contract. Intending purchasers should not rely on them as statements of representation of fact, but must satisfy themselves by inspection or otherwise as to their accuracy. No person in this firm's employment has the authority to make or give any representation or warranty in respect of the property.