



## 3a Old Green Close

Whitwell, Worksop, S80 4GN

Offers Around £380,000

Situated within this popular rural village, affording easy access to the M1 (Junction 30) a rare opportunity to acquire a very well proportioned detached bungalow, enjoying an elevated location close to the village centre. Whitwell offers a variety of local facilities including primary school, supermarket, doctors surgery / pharmacy and 2 pubs.

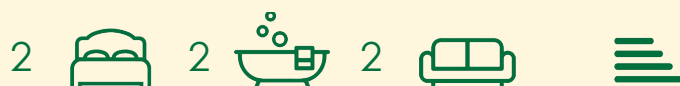
This substantial detached bungalow features 2 large reception areas, living / dining kitchen, en suite master bedroom, bedroom 2, main bathroom. Planning granted to further extend to create utility room, further bedroom (first floor) and double garage. Raised front garden area, rear gardens. This property has been largely refurbished, although in need of completion.

Extensive surrounding grounds.

- substantial detached bungalow enjoying far reaching views to the front
- extensively renovated although in need of completion
- large surrounding plot, permission to further extend
- attractive rural village with great transport links
- local facilities within walking distance
- Easy access to North Notts, South Yorks and North Derbys M1 (Junction 30) 3.5 miles

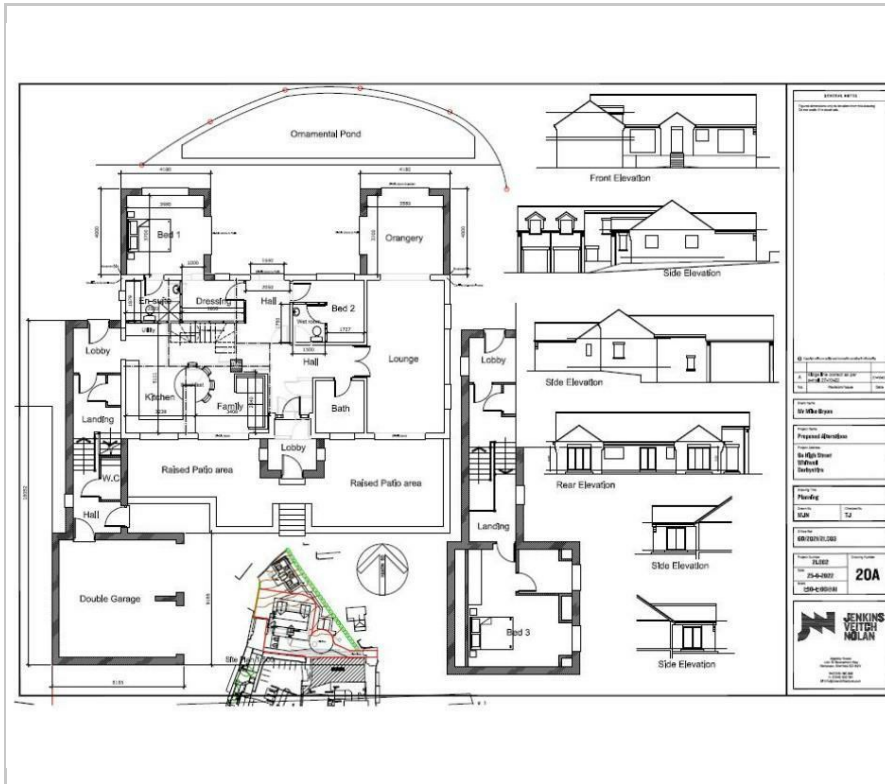
### Viewing

Please contact our Office on 01302 751616 if you wish to arrange a viewing appointment for this property or require further information.





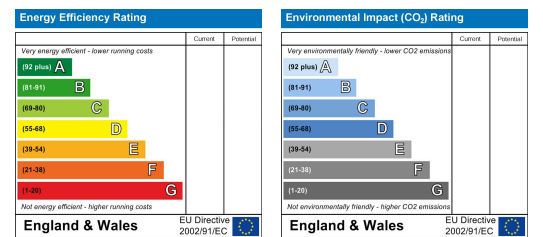
## Floor Plan



## Area Map



## Energy Efficiency Graph



These particulars, whilst believed to be accurate are set out as a general outline only for guidance and do not constitute any part of an offer or contract. Intending purchasers should not rely on them as statements of representation of fact, but must satisfy themselves by inspection or otherwise as to their accuracy. No person in this firm's employment has the authority to make or give any representation or warranty in respect of the property.