



## 33 Rockingham Road

Wheatley, Doncaster, DN2 4BN

Offers Around £135,000

A fantastic opportunity to purchase a well presented and deceptively spacious three bedroom mid terrace house on a sought after roadway within Wheatley. The property in brief comprises; entrance porch, hallway, lounge with feature fireplace, dining room, modern kitchen, cellar with two rooms, three good sized bedrooms and family shower room with white suite. Outside; gated access to a front courtyard and larger than average landscaped rear enclosed garden with attractive flower borders. Ideally located close to town centre, Doncaster Royal Infirmary and transport links this lovely family home must be viewed to be appreciated.

- Terrace House
- Three bedrooms
- Two reception rooms
- Modern fitted kitchen
- Cellar ideal for storage
- Shower room with white suite
- Landscaped rear enclosed garden
- Located close to town, DRI and transport links
- Well presented throughout
- Must be viewed

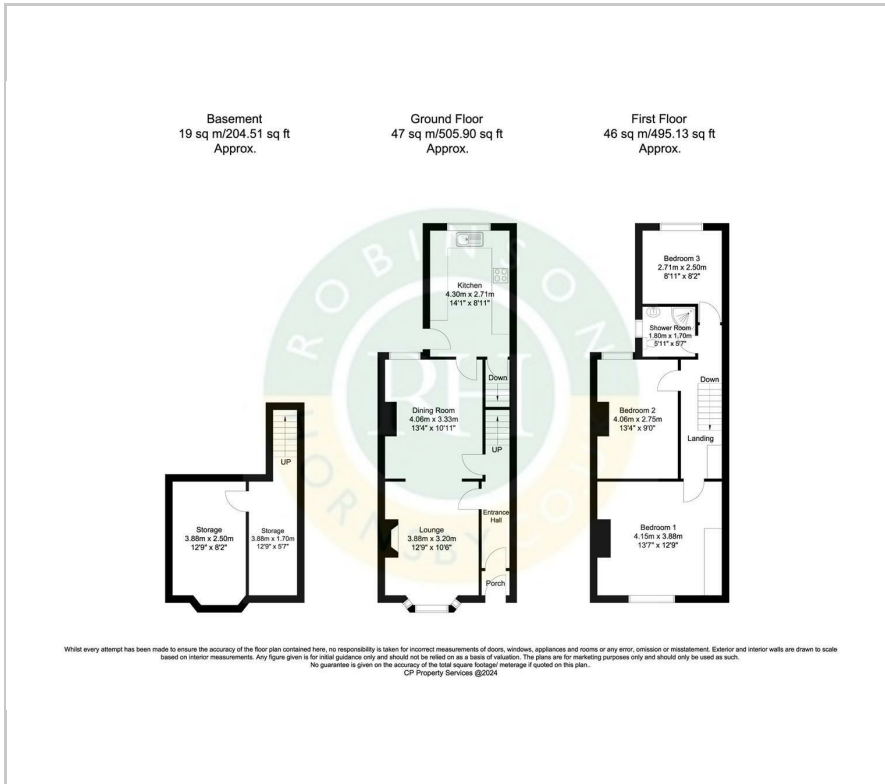
### Viewing

Please contact our Office on 01302 751616 if you wish to arrange a viewing appointment for this property or require further information.





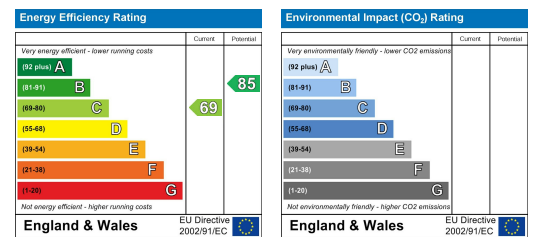
# Floor Plan



# Area Map



# Energy Efficiency Graph



These particulars, whilst believed to be accurate are set out as a general outline only for guidance and do not constitute any part of an offer or contract. Intending purchasers should not rely on them as statements of representation of fact, but must satisfy themselves by inspection or otherwise as to their accuracy. No person in this firm's employment has the authority to make or give any representation or warranty in respect of the property.