



# Woodhouse, 18 Park Drive

Sprotbrough, Doncaster, DN5 7LA

## Asking Price £385,000

A fantastic opportunity to purchase a beautifully appointed, substantially extended three bedroom semi detached house offering deceptively spacious, versatile accommodation on a prestigious roadway within Sprotbrough village. The property in brief comprises; entrance hallway, lounge with feature fireplace, sitting room, fitted kitchen/breakfast room, study, garden room/dining room and bedroom with en suite shower room to the ground floor. To the first floor are two good sized bedrooms, family bathroom and balcony overlooking the private rear garden. Outside; double gates to the front provide access to a large driveway. To the rear is an attractive landscaped garden with paved patio seating area and outbuilding which provides storage, gym and utility room. Ideally located close to reputable schools and motorway connections this fantastic family property must be viewed to be appreciated.

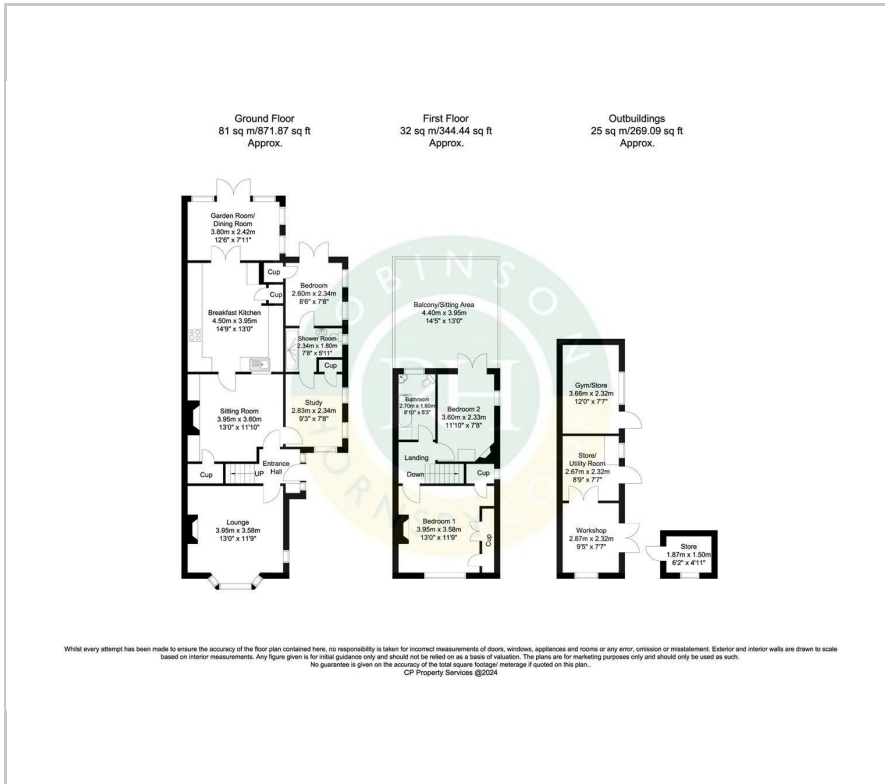
- Semi detached house
- Three good sized bedrooms
- Beautifully appointed versatile accommodation
- Fitted kitchen/breakfast room
- Lounge, sitting room, garden room and office
- Downstairs bedroom and shower room
- large landscaped rear garden
- Outbuilding which provides, storage, gym and utility
- Double gates to the front with ample off road parking
- Must be viewed

### Viewing

Please contact our Office on 01302 751616 if you wish to arrange a viewing appointment for this property or require further information.



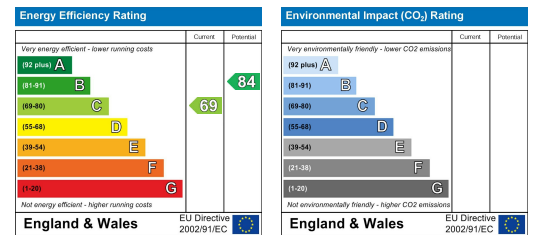
# Floor Plan



# Area Map



# Energy Efficiency Graph



These particulars, whilst believed to be accurate are set out as a general outline only for guidance and do not constitute any part of an offer or contract. Intending purchasers should not rely on them as statements of representation of fact, but must satisfy themselves by inspection or otherwise as to their accuracy. No person in this firm's employment has the authority to make or give any representation or warranty in respect of the property.