



## The Byre Sunderland Farm Close

Tickhill, Doncaster, DN11 9GB

Offers Around £225,000

Offering well presented, single storey accommodation, this attractively refurbished barn conversion appointed to a high standard is well worthy of inspection. Ideally located within easy reach of the excellent local facilities, the property comprises of a large open plan living, dining kitchen, utility, bathroom with stylish rolled top bath, bedroom with en suite shower room, dressing room / occasional 2nd bedroom. Outside is off road parking and patio / courtyard area. Tickhill offers a wide range of local shops, bars and restaurants, as well as being within easy reach of the motorway network (A1 / M18)

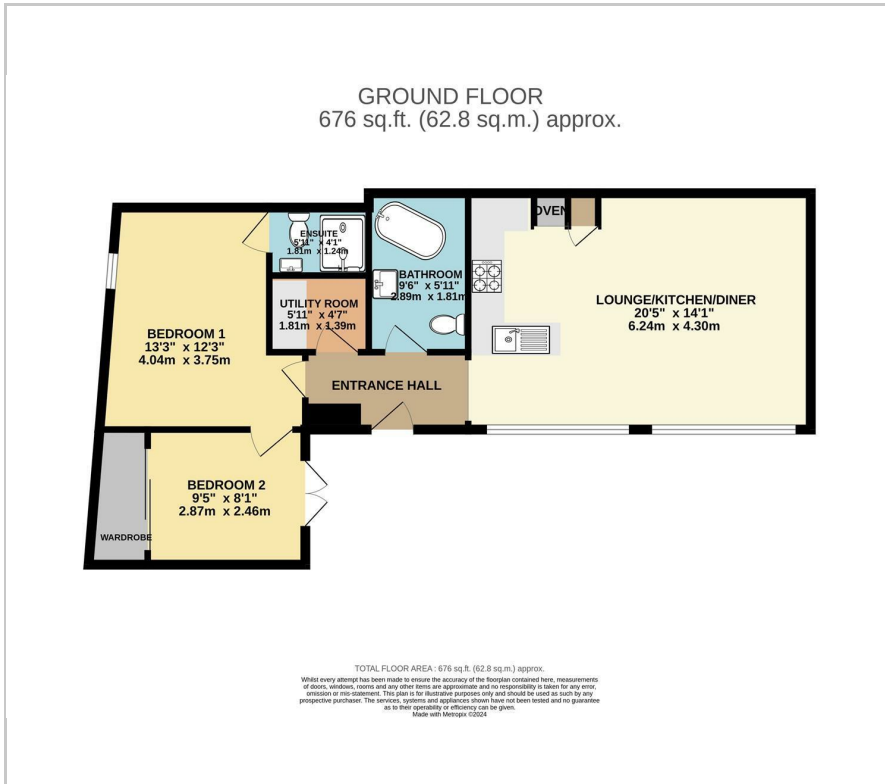
- Single storey barn Conversion
- Master bedroom and 2nd occasional bedroom
- Open plan kitchen/living area
- Ensuite to master bedroom
- Family bathroom with roll top bath
- Gated courtyard setting
- Off road parking for 2 vehicles
- Recently installed double glazed windows and doors
- Ideally located close to Tickhill centre
- Must be viewed

### Viewing

Please contact our Office on 01302 751616 if you wish to arrange a viewing appointment for this property or require further information.



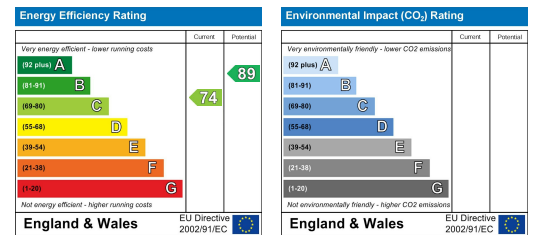
## Floor Plan



## Area Map



## Energy Efficiency Graph



These particulars, whilst believed to be accurate are set out as a general outline only for guidance and do not constitute any part of an offer or contract. Intending purchasers should not rely on them as statements of representation of fact, but must satisfy themselves by inspection or otherwise as to their accuracy. No person in this firm's employment has the authority to make or give any representation or warranty in respect of the property.