



4 Apostle Close

Warmsworth, Doncaster, DN4 9JQ

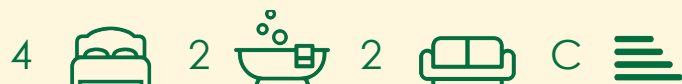
Asking Price **£269,000**

A rare opportunity to purchase a well presented four bedroom detached house occupying a larger than average plot on a sought after cul de sac within Warmsworth. The property in brief comprises; entrance hallway, cloaks/WC, lounge with feature fireplace, separate dining room, modern fitted kitchen, conservatory extension, master bedroom with en suite shower room, three further good sized bedrooms and contemporary family bathroom. Outside; ample off road parking to the front, detached garage and large private rear enclosed garden with summer house/bar. Ideally located close to local amenities, reputable schools and motorway connections this fantastic family home must be viewed to be appreciated.

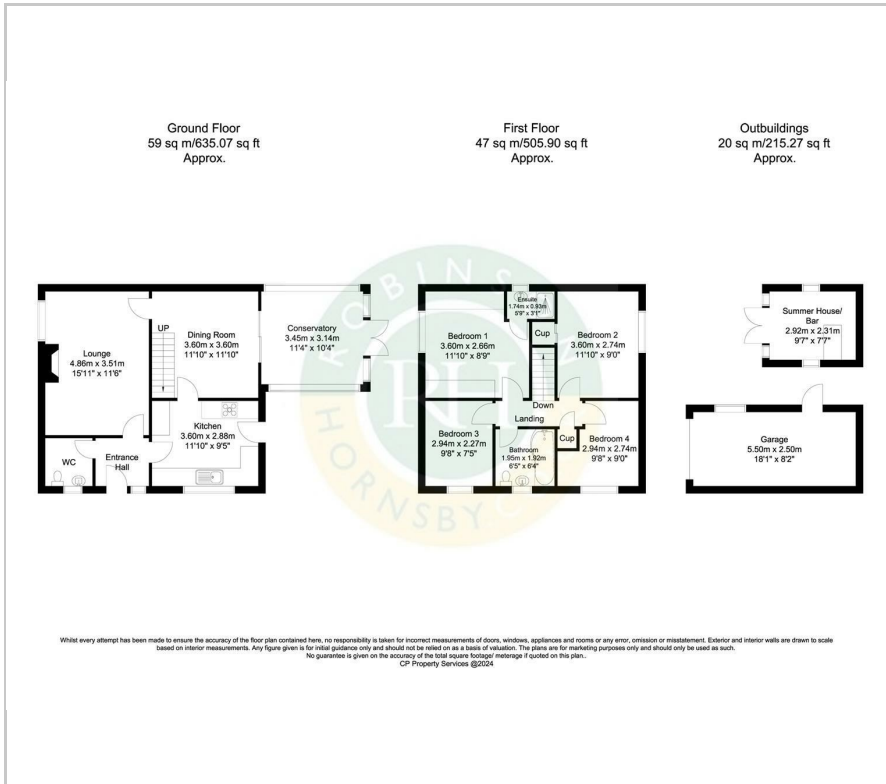
- Detached house
- Four good sized bedrooms
- Lounge, dining room and conservatory extension
- Modern fitted kitchen/breakfast room
- Ensuite to master bedroom
- Recently fitted contemporary bathroom suite
- Ample off road parking and detached garage
- Large enclosed rear garden with summer house/bar
- Quiet cul de sac location
- Close to amenities, reputable schools and motorway connections

Viewing

Please contact our Office on 01302 751616 if you wish to arrange a viewing appointment for this property or require further information.



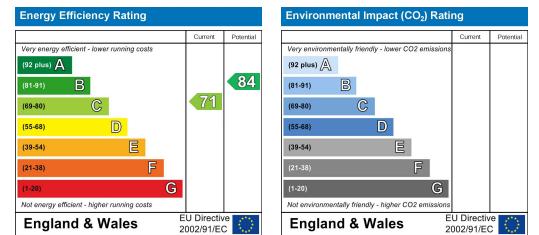
Floor Plan



Area Map



Energy Efficiency Graph



These particulars, whilst believed to be accurate are set out as a general outline only for guidance and do not constitute any part of an offer or contract. Intending purchasers should not rely on them as statements of representation of fact, but must satisfy themselves by inspection or otherwise as to their accuracy. No person in this firm's employment has the authority to make or give any representation or warranty in respect of the property.