



Shetland House Station Road

Walkeringham, Doncaster, DN10 4JL

Asking Price £375,000

A well presented and deceptively spacious 4 bedroom detached family home. Situated within the semi rural village of Walkeringham this property must be viewed. Accommodation comprises; hall, lounge to front, open plan kitchen living area with modern facilities and access to rear decking. The ground floor also comprises Bedroom 3, Family Bathroom and Utility. Stairs lead to the first floor and the Spacious Master Bedroom with En-suite, additional Shower Room and further generous size Bedrooms. Larger than average rear garden with sheds.

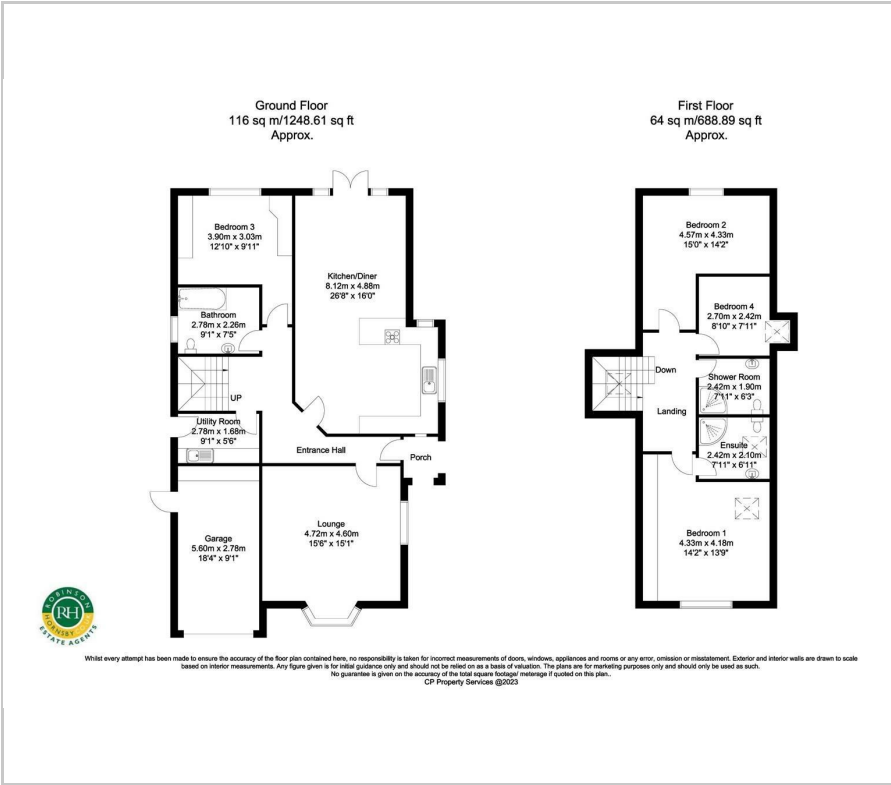
- around 2,000 sq ft of living space
- attractive semi rural village
- 4 beds , 3 bath / shower rooms
- modern open plan, kitchen / diner
- good sized rear gardens
- garage and parking
- range of large timber outbuildings
- worthy of inspection
- FREEHOLD
- COUNCIL TAX BAND C

Viewing

Please contact our Office on 01302 751616 if you wish to arrange a viewing appointment for this property or require further information.



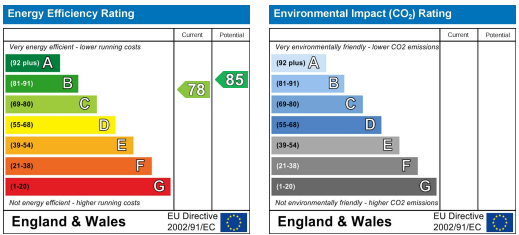
Floor Plan



Area Map



Energy Efficiency Graph



These particulars, whilst believed to be accurate are set out as a general outline only for guidance and do not constitute any part of an offer or contract. Intending purchasers should not rely on them as statements of representation of fact, but must satisfy themselves by inspection or otherwise as to their accuracy. No person in this firms employment has the authority to make or give any representation or warranty in respect of the property.