



Blacksmith's House Nutwell Lane

Old Cantley Village, Doncaster, DN3 3QL

Reduced To £265,000

Located in the heart of this popular rural village, bordering open countryside, a very well proportioned detached home, offering extensive and characterful family accommodation, Briefly comprises; 2 generous reception rooms, breakfast kitchen with cream units, utility room, bar / study, WC. 1st floor provides master bedroom with en suite shower room, 2 further bedrooms and house bathroom. Outside; secluded garden, providing private seating areas, and facility for off road parking, well screened with mature trees. Further parking on a separate plot to the side of the property. Front garden.

Full re decoration throughout.

A fine property of great charm, and well worthy of inspection.

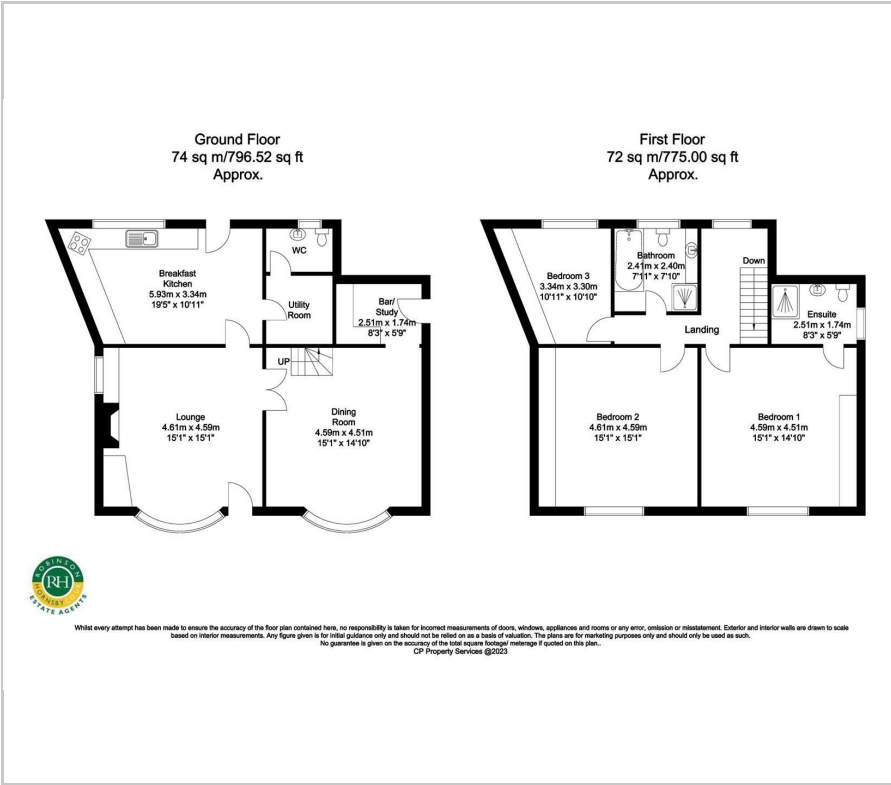
- characterful period property in village setting
- close to open countryside
- well proportioned family accommodation
- 3 bedrooms with en suite to master
- off road parking
- private secluded garden
- full re decoration
- easy access to Doncaster and motorway links
- well worth a visit!

Viewing

Please contact our Office on 01302 751616 if you wish to arrange a viewing appointment for this property or require further information.



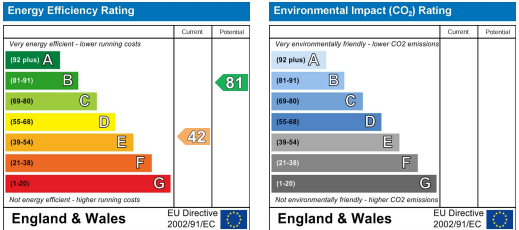
Floor Plan



Area Map



Energy Efficiency Graph



These particulars, whilst believed to be accurate are set out as a general outline only for guidance and do not constitute any part of an offer or contract. Intending purchasers should not rely on them as statements of representation of fact, but must satisfy themselves by inspection or otherwise as to their accuracy. No person in this firms employment has the authority to make or give any representation or warranty in respect of the property.