



Interior and Exterior Design Catalogue

NEW WORLD ENERGY

Warning Tongue Lane Development

Contents Page:

– Exterior Design

- Solar Roof Tiles
- Flexi-Solar Panels
- HVAC System
- Power Factor Correction Unit
- Hybrid System

– Interior Design

- Heating Film
- Internal and External Doors
- Wardrobes
- Kitchens
- Ornate Ceilings
- Marble Walls
- Marble Flooring
- Ornate Flooring
- Jacuzzis
- Swim Spas
- Showers, Saunas Steam room
- Toilets
- Sinks
- Taps



Exterior Design Catalogue

Solar Roof Tiles



Roof solar tile series

Double-Glass Roof solar tile series

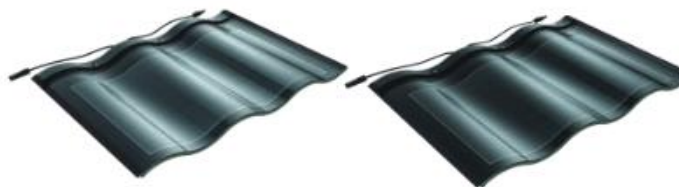
It is gleaming and with graceful curve, inheriting the beauty of glaze. Thin-film solar core technology will lead the fashion.



Double-Glass Triple-Arch Tile Standard Edition

30W

It suits to small architecture's roof, satisfying your aesthetic sense. For example: Villas, houses, special-feature towns, etc.



gray

black

solar cell efficiency: 18.7% solar tile efficiency: 17.44%

Physical parameters

product model: BSM-30D
length: 500mm
width: 718mm
arch height: 41mm
weight: 10KG
color: black, gray
junction box: 39*46*16.6 (mm) IP67
cable type: 2.5mm solar cable 450 (+10/-0) mm
cable connector: MC4

Electrical parameters

chip type: CIGS
power: 30W
short-circuit current: 4A
open-circuit voltage: 10.6V
current at PMPP: 3.5A
voltage at PMPP: 8.6V

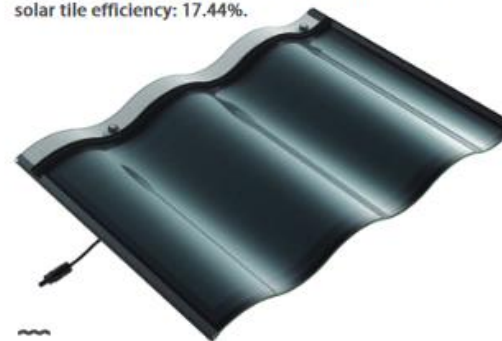
Function grade

loading grade: 2400Pa
waterproof grade: IP67
fire-proof grade: A
hail-proof grade: level 4 (ANSI FM 4473)
working temperature: -40° C to +85° C



Single-Glass Roof solar tile series

With innovative single-glass structure, light and beautiful, it can be widely used in load-bearing; made from toughened glass, it is firm and tenacious, showing the dynamic architectural aesthetics with great fashion. solar cell efficiency: 18.7%, solar tile efficiency: 17.44%.



Single-Glass Triple-Arch Tile Standard Edition

30W

It suits for the High-end commercial buildings, with gleaming appearance, combining aesthetics and environment-protection.



Tile has passed the TUV Certification of security and function in Germany.



Tile has met the security requirements of the Canadian and American markets at the same time, and has passed the UL Certification of fire-proof in the US.



Tile has passed the CE Certification

Physical parameters

product model: BSM-30S
length: 700mm
width: 500mm
arch height: 35mm
weight: 5.2KG
color: black
junction box: 68*68*19.7(mm)IP67
cable type: 2.5mm solar cable 450 (+10/-0) mm
cable connector: MC4

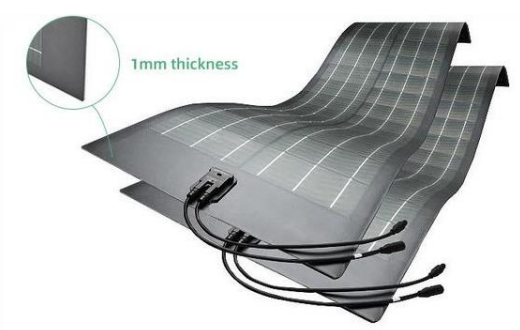
Electrical parameters

chip type: CIGS
power: 30W
short-circuit current: 4.45A
open-circuit voltage: 10.16V
current at PMPP: 3.87A
voltage at PMPP: 7.79V

Function grade

loading grade: 2400Pa
waterproof grade: IP67
fire-proof grade: B1
hail-proof grade: level 4 (ANSI FM 4473)
working temperature: -40° C to +85° C

Flexi-Solar Panels



Generates electricity even at low light levels
Second generation solar technology
Aesthetics to suit the application

Custom Designed Semi-Transparent, Multi-coloured Solar Panels

Available in transparencies up to 50%
Efficiency of up to 12%

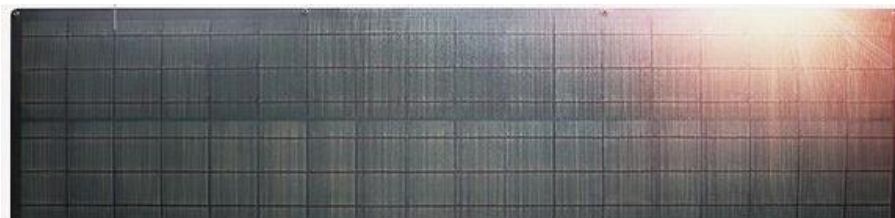


Works down to ambient light levels
Highly aesthetic finish

Less position sensitive
Bespoke sizing available
Single or double glazed panels available



Specially designed Waterproof, Rollable Bird Deterrent Solar Panels



ETFE coating

Waterproof, fire-resistant, anti-corrosion.



ETFE



Waterproof



Fire-resistant

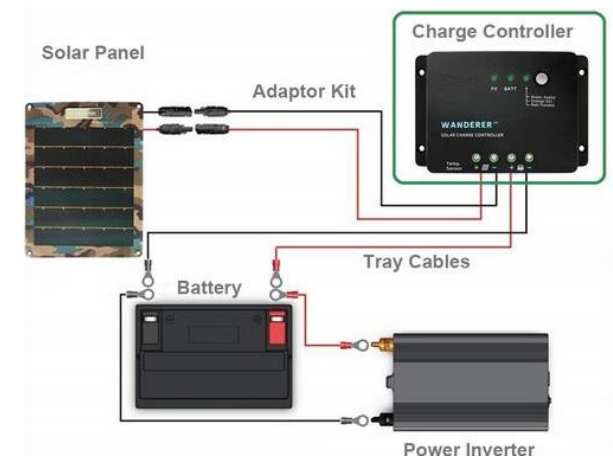
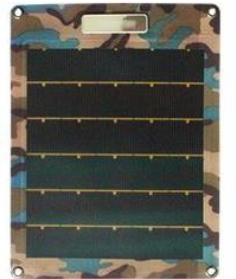
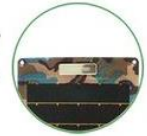


Anti-corrosion

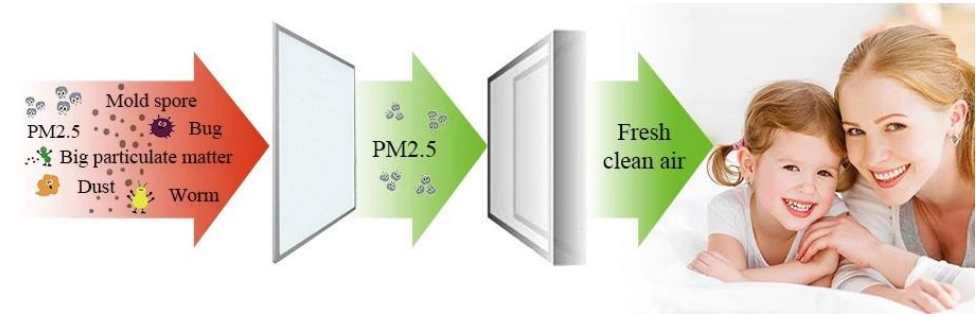
Junction box IP67
is placed on front and back side

Weather, water, and corrosion resistance

Excellent rollable



House Ventilation Air Cleaning (HVAC) System



The TVOC emission period generated after the renovation is up to 10 years. Besides, second-hand smoke, soot, mildew, odor, dust, etc., if not discharged in time, will threaten the health of the family.

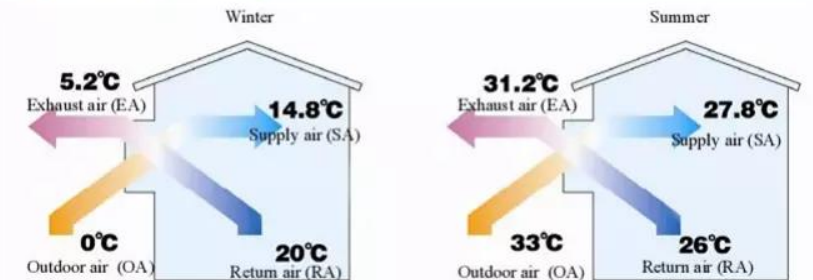
This system removes harmful particles within 30 minutes.

Energy Recovery Ventilation (ERV) is the energy process of exchanging the energy contained in normally exhausted buildings or spaces, and using it to treat (precondition) the incoming outdoor ventilation air in residential and commercial HVAC systems.

During the warmer seasons, the system pre-cools and dehumidifies, and visa versa in the cooler seasons. The benefit of using energy recovery is the ability to meet the ASHRAE ventilation and energy standards, whilst also improving indoor air quality reducing the total HVAC equipment capacity.



Energy saving principle

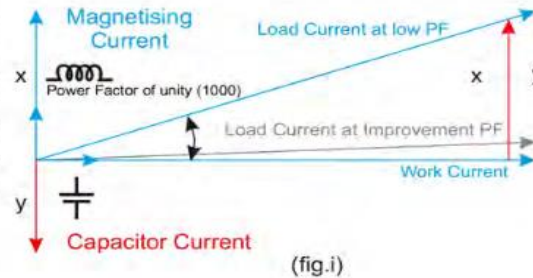


Power Factor Correction Unit



What Is Power Factor ?

Power Factor is the ratio between KW and KVA drawn by an electrical load where the KW is the actual power and KVA is the apparent power. It is a measure of how effectively the current is being converted into useful work output and more particularly power factor is a good indicator of the effect of the current on the efficiency of the power system. A load with results in the most efficient loading of the supply. Low PF is generally the result of an inductive load such as an induction motor, Power transformer, lighting ballasts, welder or induction furnace. A low power factor due to an inductive load can be improved by the addition of power factor correction panel.



Order Code	ES-1	ES-9
Applicable max load	10 KW / 40 Amp.	25 KW / 100 Amp.
Power Rating	2.8 kVAr	9.2 kVAr
Rated Voltage	240 / 220V AC 50 Hz	
Phase Type	Single	
Full Load Current	11.6 Amp.	38.3 Amp.
No. of Channels	6 Per Phase	9 Per Phase
Channel kVAr	0.09, 0.18, 0.36, 0.72, 0.72, 0.72	6 x 0.45, 3 x 2.16
Accuracy	0.9 kVAr	0.45 kVAr
Size	12" x 8" (5" depth)	16" x 20" (5" Depth)



Technical Explanation

Total power (KVA) consist of real power KW (Power consumed in Phase) and Reactive Power kVAr (Power consumed out of Phase). The Power Factor is ratio between real power and total power, If load is running for H hours.
Then Total Power = kVAr, Real Power + Kwh, Power Factor = Kwh / kVA.
This is the method used by energy meter.

How to Improve Power Factor?

Capacitive Power Factor correction provides capacitive current to the circuit due to which magnetizing component of load current is cancelled (as shown in fig. 1) and thereby the power factor is improved.

Benefits of Improved Power Factor

- * Removal of Low power factor penalties.
- * Reduction in Demand Charges and core losses.
- * Decrease I^2R Losses 4 times.
- * Reduction in electrical breakdown.
- * Saving on electric bills.
- * Reduced CARBON Emission.
- * Improvement of line voltage.
- * Surge Suppression.

Hybrid System



Equipment for Hybrid Solar Systems
Typical hybrid solar systems are based on the following additional components:

1. Solar Panels
2. Hybrid Inverter
3. Powerwall
4. DC Disconnect (additional)



✓ Intelligent

Each battery with independent BMS system manages power output smartly and effectively.

✓ Modularization

Modular design gives the end customers the power of choice of capacity Deliver up to 140KW with single max module (10.24KWh) at 14pcs parallel connection.

✓ Easy to install and use

Just plug and play to minimize the installation time and cost. Compact and fashionable design fits in your sweet home environment.

✓ Compatibility

Compatible with most of the available Hybrid inverters.

✓ Safety Cert

UL1642, IEC62619, CE, UN38.3, MSDS.

✓ Long life and safety

Vertical industry integration ensures more than 6000 cycles with 80% DoD.

Safe Lithium iron phosphate battery cell.

As the leading vertically integrated manufacturer of lithium iron phosphate battery systems, GSL ENERGY has provided various battery solutions for nearly all kinds of ESS applications. Thanks to our self-developed core technology in cells/BMS /system design, GSL ENERGY has delivered more than 20+ countries serving 100,000+ users.

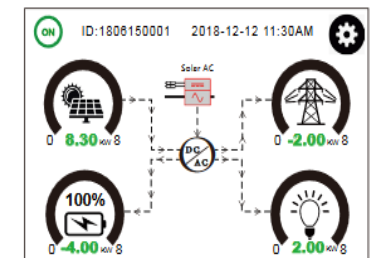


Inverter Features

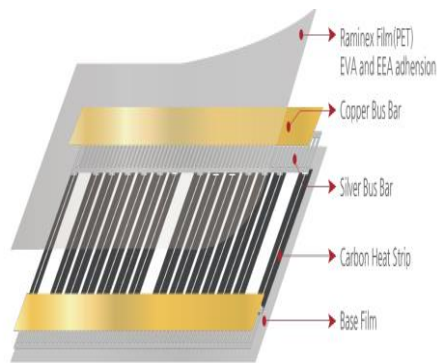
- ◆ AC Coupled
Update existed solar on-grid system to hybrid
- ◆ Smart Load
Use Gen input as crucial load output
- ◆ BMS
Compatible with PYLONTECH, LG, BYD etc brand battery
- ◆ Multiple Output
120V/240V Split phase, 230V Single phase, 120V/208V Two-thirds phase
- ◆ Protections
PV rapid shutdown control, PV Arc Fault detection, PV input lightning protection, Multiple inverters in parallel
- ◆ Multiple Working Modes
Grid Tied, Hybrid or OFF Grid. Simultaneously manages power to/from Solar, Battery, Grid, Load and Generator
- ◆ Additional Feature
UPS time less than 5ms. Six stages time of use setting. Charge and discharge up to 190A 7.6/8KW (120A 5KW)
Load or home power first with zero export to grid.
- ◆ Support multiple parallel

Colour Touchscreen Display

Touchscreen interface as easy to understand as your phone. Simultaneously manages power to/from Solar Panels, Batteries, Grid, Load, and Generator.



Interior Design Catalogue



Excel Heating Film



1. OKondol Product Information

Born from a high temp curing process, OKondol is a film unlike the normal line type film. OKondol has now been perfected. OKondol can be used in its full 100cm or in 50cm width form.

Different from the line type film, OKondol uses carbon paste cured at 140°C, perfecting nanotechnology to its ultimate form. Nine complete layers are used to complete a heating film like no other. OKondol is coated with a sturdy layer of PE to ensure a long life span.

The edges of OKondol is also completely sealed off with a flexible layer for easy fitting during installation.

Nanotechnology used in OKondol evenly disperses heat that can reach up to 50°C. Nanotechnology provides a healthy alternative to conventional heating.

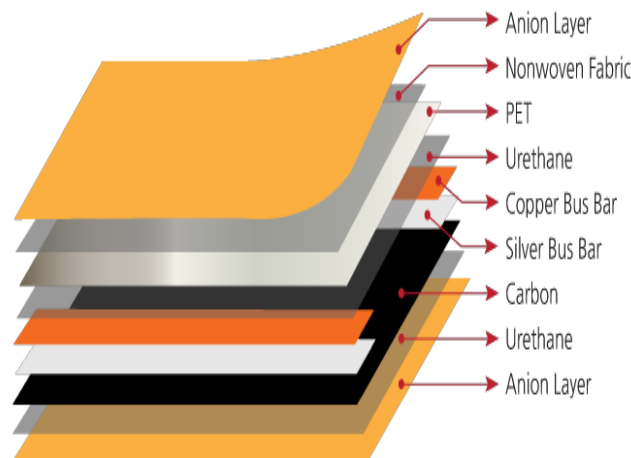
OKondol is quickly becoming a favorite amongst our current buyers as well as new buyers across the globe.

2. OKondol Product Specifications

Model	OKondol
Type	Heating Film
Width(mm)	1000mm (500+500)
Wattage(w/m)	220 ~ 260w/m
Thickness	0.72mm
Packaging	75m/Box
Temperature	40 ~ 50 °C
Weight	56.4kg
Max. Component Temp	PET : 80 °C, Adhesive : 120 °C



OKondol Composition

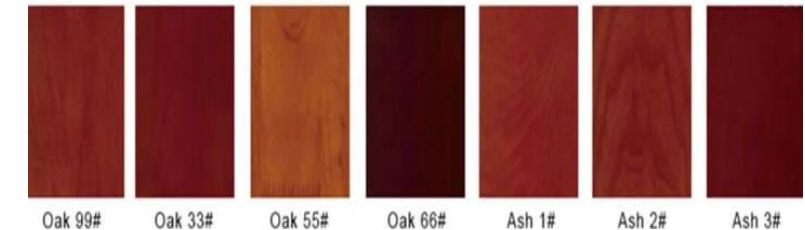


Electric Consumption		Thickness (mm)	Package (m/Box)	Weight (Box/kg)	Temp(°C)
w/m	w/m2				
110	220	0.4	100	31.50	60
180	220	0.4	100	46.50	60
220	220	0.4	75	46.50	60
350	350	0.4	75	46.50	80

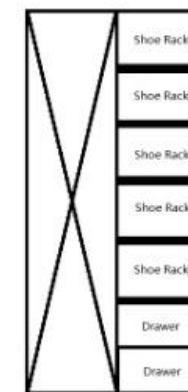
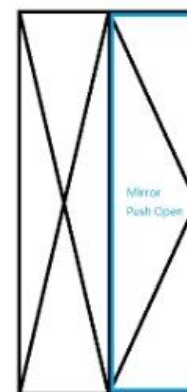
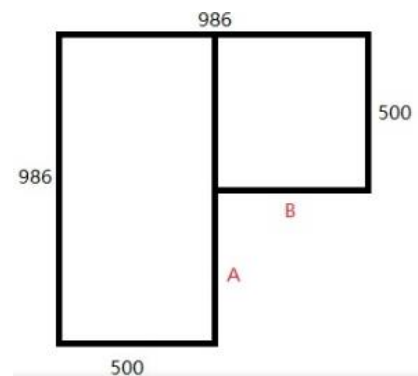
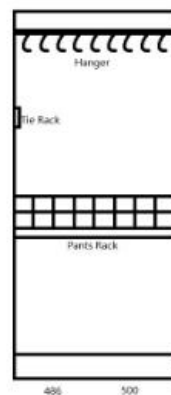
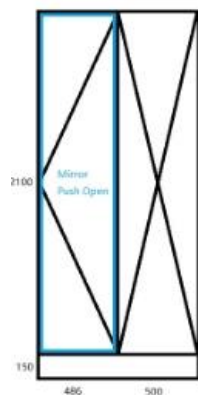
Aptly named, EXCEL, our brand of film uses the best carbon found on the market today. A secret mixture of carbon paste allows for the proper amount of heat to be reduced from the applied voltage. Pure copper with levels at 99.92% and silver compound at levels of 99.99% allow for even distribution of electricity throughout our film. Safe transfer of power reduces internal static electricity and removes the worry of uneven heat distribution.

When all the things are considered, the materials used in manufacturing, research, design, safety and price. Our excel brand is the most trusted in the industry.

Internal and External Doors



Wardrobes



Kitchens



High Gloss Lacquer Standard Kitchen



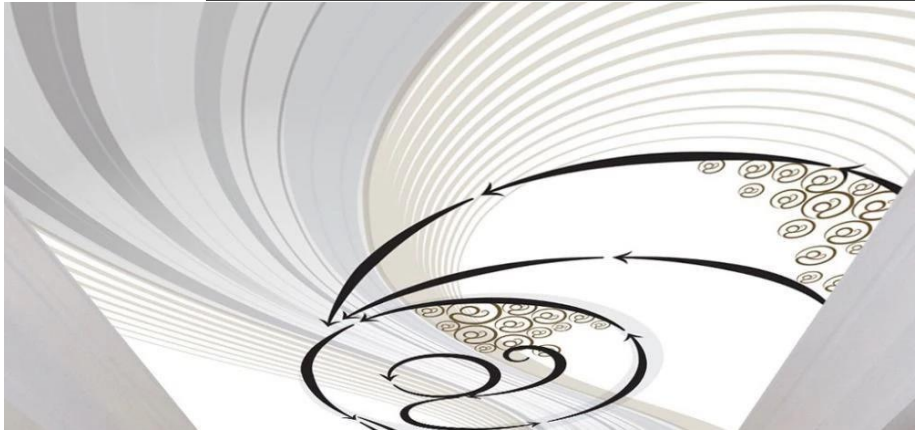
Lacquer Curved Design Kitchen Cabinet



Matt Lacquer Shaker Door Kitchen Cabinet



Ornate Ceilings



Marble Walls



BLUE AGATE



DELICATUS WHITE GRANITE



SMOKEY QUARTZ



TITANIUM GRANITE



ARABESCATO VAGLI



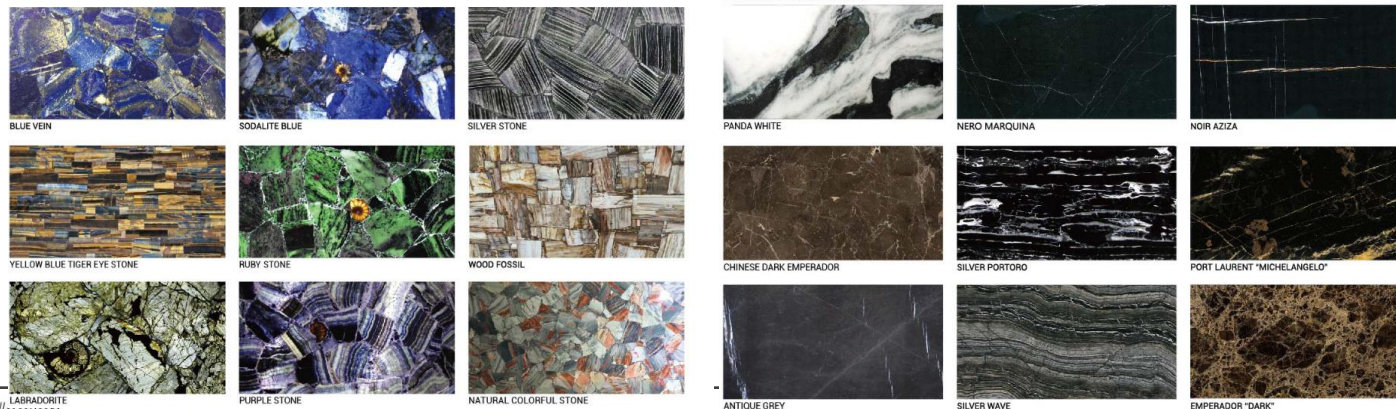
NERO MARQUINA



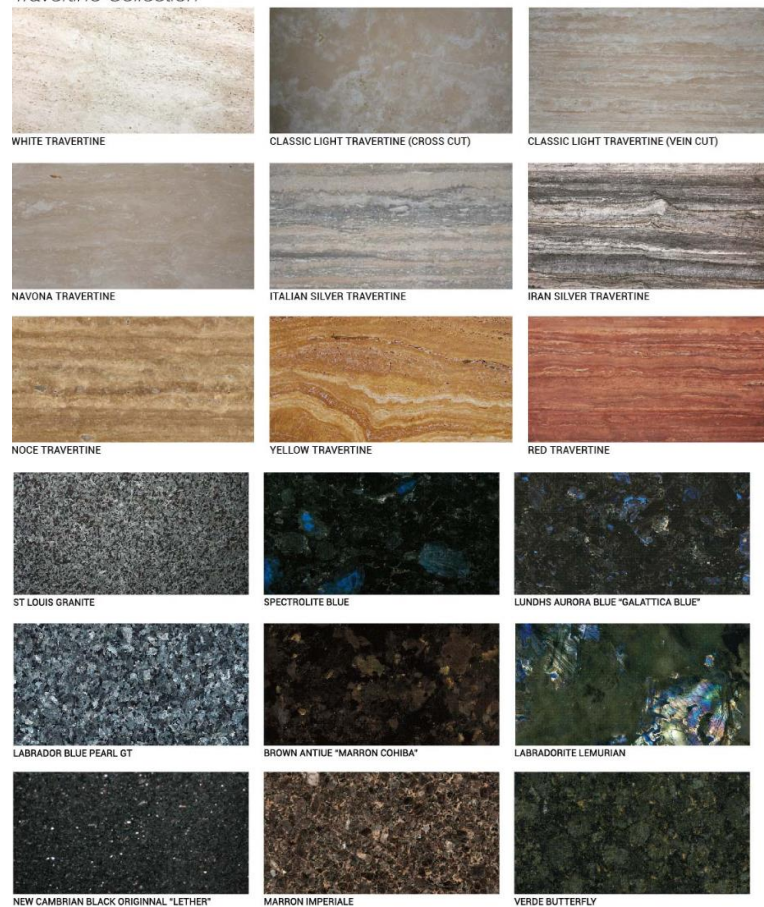
BLACK OBSIDIAN



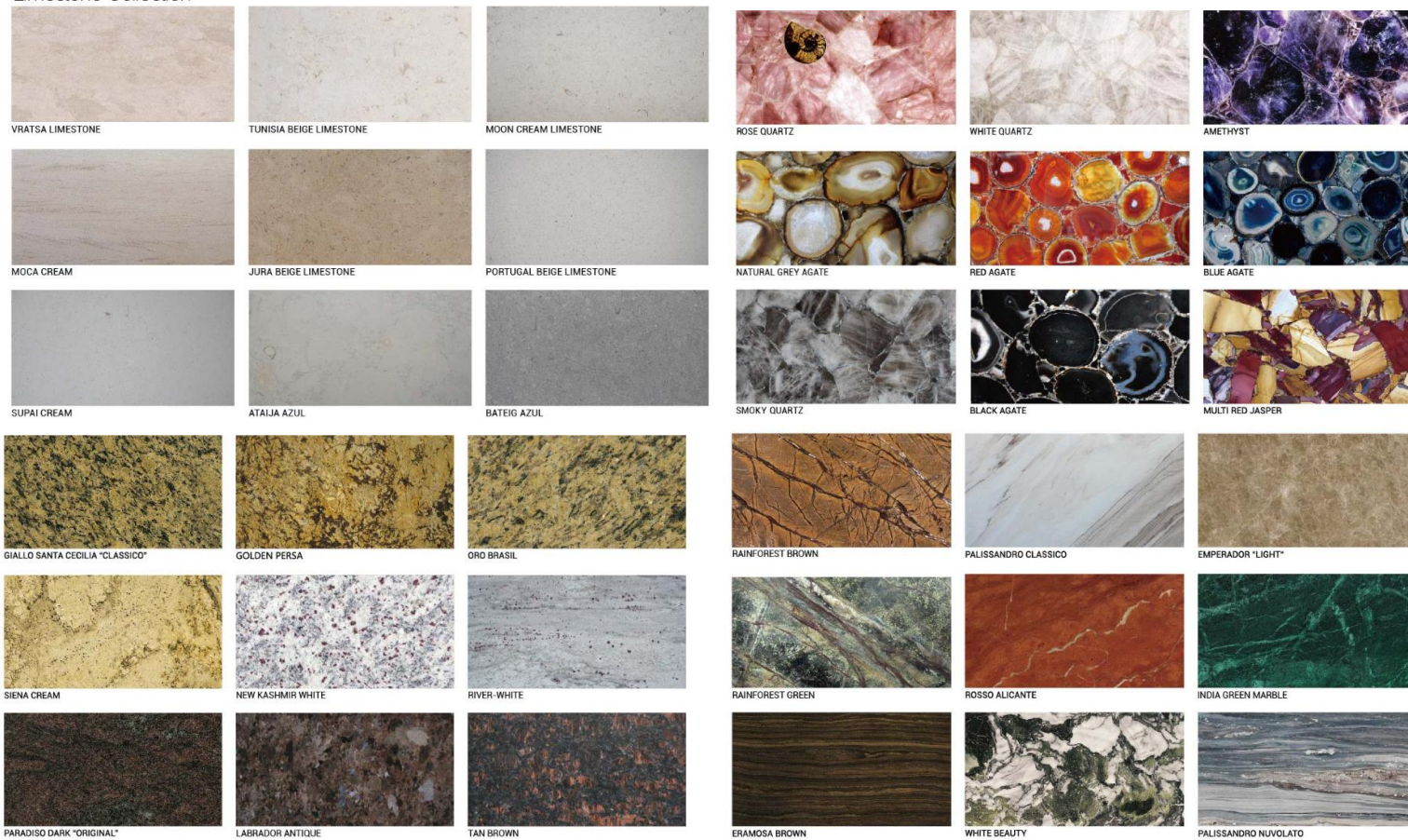
Individual Floors and Walls



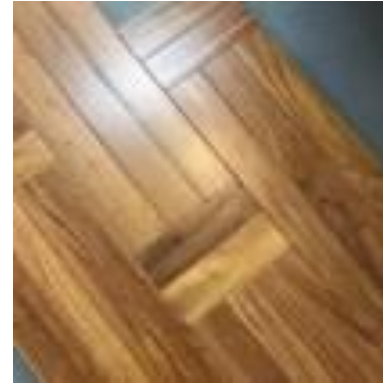
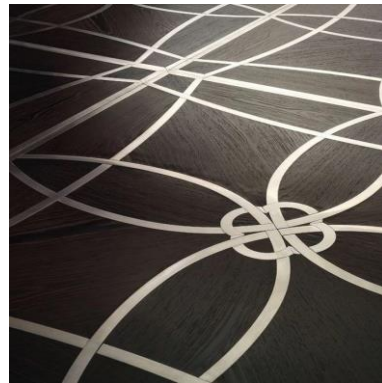
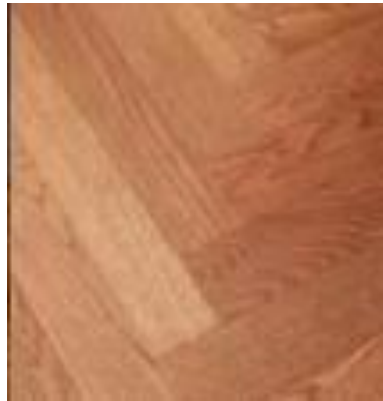
Travertine Collection



Limestone Collection



Ornate Flooring



Jacuzzis



HS-693
Size: 2150x2150x900mm



Control system:	1set	控制系统:	1套
Water pump:	2pcs	水泵:	2套
Jet total:	60pcs	喷嘴总数:	60个
Filter pump:	1pc	过滤器:	1套
Led:	1pc	泡池灯:	1个
Small led:	10set	灯珠:	10套
Total power:	6.95kW	总功率:	6.95kW



HS-694
Size: 2200x2200x900mm



Control system:	1set	控制系统:	1套
Water pump:	2pcs	水泵:	2套
Jet total:	34pcs	喷嘴总数:	34个
Filter pump:	1pc	过滤器:	1套
Led:	1pc	泡池灯:	1个
Small led:	10set	灯珠:	10套
Total power:	6.95kW	总功率:	6.95kW



Swim Spa's



Acrylic Color	White
Water Pump	Yes,Included
Drainer	Yes,Included
Trademark	HANSE
Specification	5890x2260x1110mm

Acrylic Color	White
Water Pump	Yes,Included
Drainer	Yes,Included
Trademark	HANSE
Specification	7800x2200x1460mm



Acrylic Color	Blue
Water Pump	Yes,Included
Drainer	Yes,Included
Specification	8020x2260x1280mm



Showers, Saunas, Steam Rooms

Glass Thickness	6mm
Computer Control Panel	Computer Control Panel
Product Name	Steam Shower Room
Glass Material	Tempered Glass



Product Name	Shower Room
Glass Color	Transparent

Product Name	Shower Room
Glass Material	Tempered Glass



Model NO.	HS-SR930AZX
Product Name	Sauna Steam Room
Specification	1600x1200x2200mm

Toilets



HS-7029
Washdown Two-piece Toilet
Size: 675x360x760mm
S-trap: 250mm Roughing-in
P-trap: 180mm Roughing-in



HS-7030
Washdown Two-piece Toilet
Size: 700x385x765mm
S-trap: 250mm Roughing-in
P-trap: 180mm Roughing-in



HS-7031
Washdown Two-piece Toilet
Size: 700x390x760mm
S-trap: 180/250mm Roughing-in



HS-7032
Washdown Two-piece Toilet
Size: 650x370x785mm
S-trap: 225mm Roughing-in
P-trap: 180mm Roughing-in



HS-7033
Washdown Two-piece Toilet
Size: 650x385x760mm
S-trap: 150/250mm Roughing-in
P-trap: 180mm Roughing-in



HS-7034
Washdown Two-piece Toilet
Size: 670x380x790mm
S-trap: 150/250mm Roughing-in



HS-7035
Washdown Two-piece Toilet
Size: 670x350x790mm
S-trap: 150mm Roughing-in
P-trap: 180mm Roughing-in



HS-7036
Washdown Two-piece Toilet
Size: 670x400x770mm
S-trap: 150mm Roughing-in
P-trap: 180mm Roughing-in



HS-6192 Washdown Wall-hung toilet
Size: 585x415x410mm
P-trap: 180mm Roughing-in



HS-6103 Washdown Wall-hung toilet
Size: 550x370x370mm
P-trap: 180mm Roughing-in



HS-6104 Washdown Wall-hung toilet
Size: 640x360x390mm
P-trap: 180mm Roughing-in



HS-6105 Washdown Wall-hung toilet
Size: 540x360x370mm
P-trap: 180mm Roughing-in



HS-7025
Washdown Two-piece Toilet
Size: 685x395x820mm
S-trap: 250mm Roughing-in
P-trap: 180mm Roughing-in



HS-7026
Washdown Two-piece Toilet
Size: 665x370x725mm
S-trap: 250mm Roughing-in
P-trap: 180mm Roughing-in



HS-7037
Washdown Two-piece Toilet
Size: 660x370x880mm
S-trap: 150mm Roughing-in
P-trap: 180mm Roughing-in



HS-7038
Washdown Two-piece Toilet
Size: 650x360x840mm
S-trap: 150mm Roughing-in
P-trap: 180mm Roughing-in



HS-7039
Washdown Two-piece Toilet
Size: 650x370x790mm
S-trap: 150mm Roughing-in
P-trap: 180mm Roughing-in



HS-7040
Washdown Two-piece Toilet
Size: 640x375x780mm
S-trap: 110/150mm Roughing-in
P-trap: 180mm Roughing-in



HS-6106 Washdown Wall-hung toilet
Size: 530x360x365mm
P-trap: 180mm Roughing-in



HS-6107 Washdown Wall-hung toilet
Size: 565x355x390mm
P-trap: 180mm Roughing-in



HS-6108 Washdown Wall-hung toilet
Size: 520x355x375mm
P-trap: 180mm Roughing-in



HS-6109 Washdown Wall-hung toilet
Size: 550x360x360mm
P-trap: 180mm Roughing-in



HS-7027
Washdown Two-piece Toilet
Size: 705x365x805mm
S-trap: 250mm Roughing-in
P-trap: 180mm Roughing-in



HS-7028
Washdown Two-piece Toilet
Size: 740x475x765mm
S-trap: 300mm Roughing-in



HS-7041
Washdown Two-piece Toilet
Size: 680x385x820mm
S-trap: 110/150mm Roughing-in
P-trap: 180mm Roughing-in



HS-7042
Washdown Two-piece Toilet
Size: 690x385x815mm
S-trap: 110/150mm Roughing-in
P-trap: 180mm Roughing-in



HS-7043
Washdown Two-piece Toilet
Size: 675x380x755mm
P-trap: 130mm Roughing-in



HS-7044
Washdown Two-piece Toilet
Size: 690x370x730mm
S-trap: 300mm Roughing-in



HS-6110 Washdown Wall-hung toilet
Size: 530x360x345mm
P-trap: 180mm Roughing-in



HS-6111 Washdown Wall-hung toilet
Size: 535x350x365mm
P-trap: 180mm Roughing-in



HS-6112 Washdown Wall-hung toilet
Size: 540x370x360mm
P-trap: 180mm Roughing-in



HS-6113 Washdown Wall-hung toilet
Size: 540x370x360mm
P-trap: 180mm Roughing-in



HS-7029
Washdown Two-piece Toilet
Size: 675x360x760mm
S-trap: 250mm Roughing-in
P-trap: 180mm Roughing-in



HS-7030
Washdown Two-piece Toilet
Size: 700x385x765mm
S-trap: 250mm Roughing-in
P-trap: 180mm Roughing-in

Sinks



HS-5103 Pedestal basin
Size: 550x430x845mm
Fixing to wall with back



HS-5104 Pedestal basin
Size: 520x445x900mm
Fixing to wall with back



HS-5105 Pedestal basin
Size: 615x485x850mm
Fixing to wall with back



HS-5106 Pedestal basin
Size: 670x525x870mm
Fixing to wall with back



HS-5001 Art basin
Size: 500x390x210mm
Above counter mounting



HS-5002/5002A Art basin
Size: 460x460x155mm
410x410x145mm



HS-5003 Art basin
Size: 500x500x165mm
Above counter mounting



HS-5004 Art basin
Size: 430x430x170mm
Above counter mounting



HS-5013 Art basin
Size: 500x500x170mm
Above counter mounting



HS-5014 Art basin
Size: 460x460x110mm
Above counter mounting



HS-5015 Art basin
Size: 465x465x170mm
Above counter mounting



HS-5016 Art basin
Size: 615x360x150mm
Above counter mounting



HS-5005 Art basin
Size: 535x440x160mm
Above counter mounting



HS-5006 Art basin
Size: 380x380x135mm
Above counter mounting



HS-5007A Art basin
Size: 490x380x130mm
Above counter mounting



HS-5008/5008A Art basin
Size: 610x410x125mm
640x410x125mm



HS-5017 Art basin
Size: 600x450x170mm
Above counter mounting



HS-5018 Art basin
Size: 475x465x180mm
Above counter mounting



HS-5019 Art basin
Size: 520x500x160mm
Above counter mounting



HS-5020 Art basin
Size: 600x360x135mm
Above counter mounting



HS-5107 Pedestal basin
Size: 665x495x860mm
Fixing to wall with back



HS-5117 Connected column Basin
Size: 510x510x865mm



HS-5108 Pedestal basin
Size: 570x480x940mm
Fixing to wall with back



HS-5115 Connected column Basin
Size: 550x515x860mm
Fixing to wall with back



HS-5009 Art basin
Size: 435x435x120mm
Above counter mounting



HS-5010 Art basin
Size: 460x460x160mm
Above counter mounting



HS-5011/5011A Art basin
Size: 480x370x130mm
455x340x130mm



HS-5012 Art basin
Size: 420x420x120mm
Above counter mounting



HS-5029 Art basin
Size: 400x400x120mm
Above counter mounting



HS-5030 Art basin
Size: 515x460x155mm
Above counter mounting



HS-5101 Pedestal basin
Size: 595x480x830mm
Fixing to wall with back



HS-5102 Pedestal basin
Size: 560x430x855mm
Fixing to wall with back



HS-5109A/5109B Pedestal basin
Size: 560x480x830mm
480x410x800mm



HS-5116 Connected column Basin
Size: 510x460x850mm
Fixing to wall with back



HS-5021 Art basin
Size: 500x405x150mm
Above counter mounting



HS-5022 Art basin
Size: 460x350x150mm
Above counter mounting



HS-5023 Art basin
Size: 540x540x175mm
Above counter mounting



HS-5024 Art basin
Size: 480x480x190mm
Above counter mounting



HS-5111 Pedestal basin
Size: 680x510x830mm
Fixing to wall with back



HS-5112 Pedestal basin
Size: 680x500x800mm
Fixing to wall with back



HS-5113 Pedestal basin
Size: 560x435x820mm
Fixing to wall with back



HS-5114 Pedestal basin
Size: 570x450x820mm
Fixing to wall with back



HS-5110 Pedestal basin
Size: 600x510x820mm
Fixing to wall with back

Taps



