



Tayberry Close

Newport

Monthly Rental Of £700



Lancasters

- Available Now
- Unfurnished
- Long Let
- No HB / No Pets
- EPC B
- Council Tax B
- Application Fee - £120
- Referencing Fee - £60 Per Person



2 Bedroom Apartment

Lounge/Diner 19' 4'' x 10' 8'' (5.9m x 3.25m)

Beautiful bright living space with plenty of room for comfy sofas, TV, and dining table. Open to...

Kitchen 6' 0'' x 10' 8'' (1.83m x 3.25m)

Gorgeous fitted kitchen with range of cupboards and integrated appliances.

Master Bedroom 11' 0'' x 9' 2'' (3.36m x 2.80m)

Fantastic master bedroom with built in wardrobes and access to an en-suite bathroom.

En-Suite

Full sized bathroom with stylish design. Bath with shower over, w/c and basin.

Bedroom 2 10' 9'' x 7' 2'' (3.27m x 2.18m) Max 'L' shape

Fitted with built in wardrobes

Bathroom

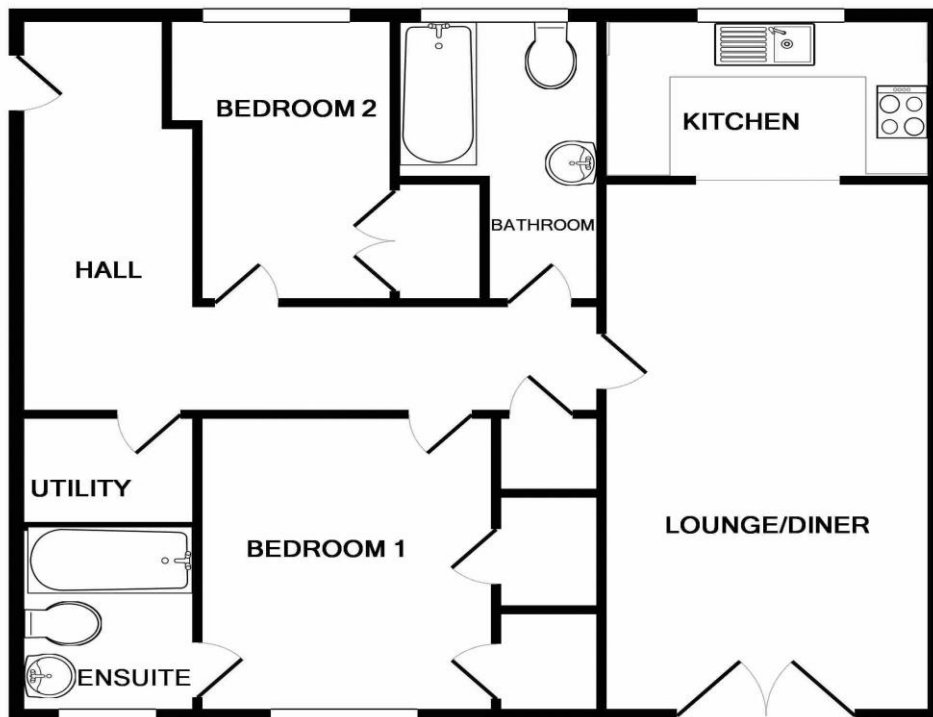
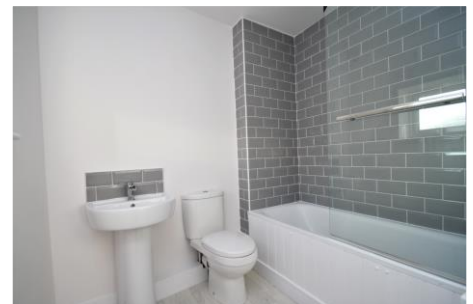
Family bathroom fitted bath and shower over, w/c & basin.

Utility

A fantastic additional space with plumbing for appliances.

Outside

Private PARKING to all apartments. Apartments 1&2 also benefit from bijou private gardens.



TOTAL APPROX. FLOOR AREA 748 SQ.FT. (69.4 SQ.M.)

Whilst every attempt has been made to ensure the accuracy of the floor plan contained here, measurements of doors, windows, rooms and any other items are approximate and no responsibility is taken for any error, omission, or mis-statement. This plan is for illustrative purposes only and should be used as such by any prospective purchaser. The services, systems and appliances shown have not been tested and no guarantee as to their operability or efficiency can be given

Made with Metropix ©2016

Cowes 01983 209020
homes@lancasters.org

Ryde 01983 614313
east@lancasters.org

Shanklin 01983 868685
south@lancasters.org