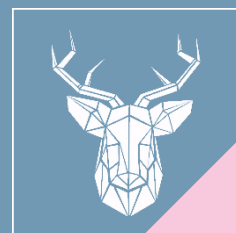




John Street

Ryde

Monthly Rental Of £675.00



Single Person accommodation for the OVER 55's - WATER AND HEATING INCLUDED WITHIN THE RENT * ONE BEDROOM APARTMENT * LONG LET * SEA VIEW * GAS CENTRALLY HEATED * STROLL TO TOWN CENTRE * SHORT WALK TO BEACH & MAINLAND LINKS * ON BUS ROUTE

- AVAILABLE NOW
- LONG LET
- GROUND FLOOR
- RENT INCLUDES WATER BILL
- DEPOSIT £775
- EPC - D / COUNCIL TAX - A



1 Bedroom Ground Floor Apartment

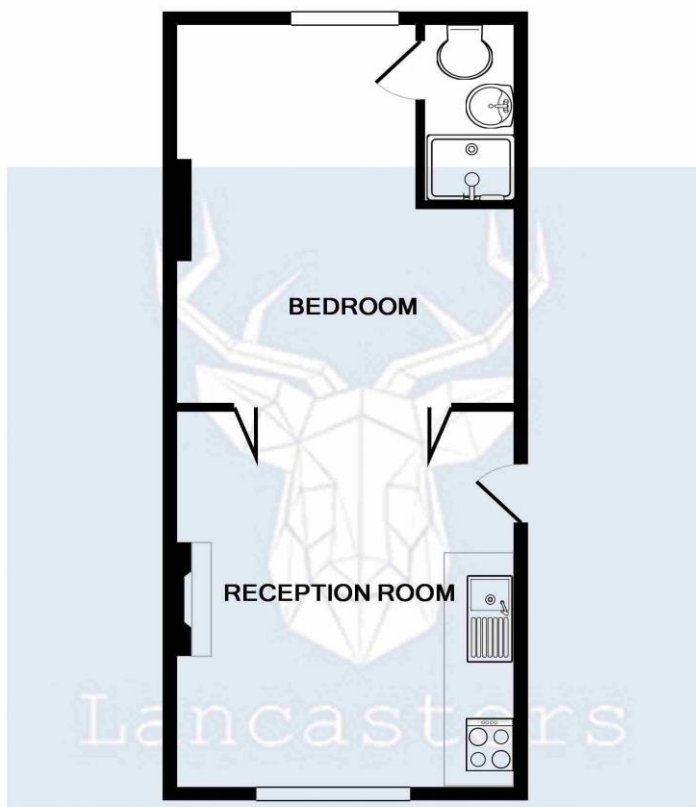
Reception/Kitchen/Diner 14' 1" x 11' 10" (4.3m x 3.6m)
Large reception room with Kitchenette - integrated hob and cooker, storage cupboards and work top. Bi-folding doors to...

Bedroom 14' 2" x 11' 10" (4.33m x 3.6m)
Large double bedroom with a rear aspect. access to....

Ensuite
Fitted with shower cubicle, basin and w/c.

Please Read

Prospective tenants are required to have a combined income of at least 2.5x the rent to pass affordability checks. If tenant income does not meet this threshold and/or they have poor credit history they may be required to provide a Guarantor. Guarantors are required to have an income of at least 3x the rent to pass affordability checks, plus no negative credit history. Based on the advertised rent of: £675pcm, the income thresholds are: Tenant(s): £20250 per year or Guarantor: £24300 per year We do not discriminate on where income comes from - earnings, benefits, pensions, investments etc are all treated equally.



TOTAL APPROX. FLOOR AREA 335 SQ.FT. (31.1 SQ.M.)

Whilst every attempt has been made to ensure the accuracy of the floor plan contained here, measurements of doors, windows, rooms and any other items are approximate and no responsibility is taken for any error, omission, or mis-statement. This plan is for illustrative purposes only and should be used as such by any prospective purchaser. The services, systems and appliances shown have not been tested and no guarantee as to their operability or efficiency can be given
Made with Metropix ©2018



Like it? Apply Here:



Don't have a QR Code reader?
How 2019 are you!

Go to: Lancasters.org
Select the 'Links' tab
Press: 'Tenant Application Form'

Isle of Wight 01983 209020
Osborne Court | The Parade | Cowes | Isle of Wight | PO31 7QS

We need one form completed for EACH adult
Thank you