



# Lansdown Gardens

Chillerton  
£265,000



Situated in a quiet cul de sac within the rural village of Chillerton - Surrounded by acres of rolling countryside. A cherished home for the last 40 years, this 3 bedroom mid terrace house has views from every window. Complete with private parking and manageable front and rear gardens.





### 3 Bedroom Terraced House

**Entrance**

Hall with stairs to the first floor.

**Sitting Room** 14' 7" x 10' 6" (4.45m x 3.19m) max

A front aspect reception with large picture window. Understairs Cupboard storage. Open plan to...

**Dining area** 10' 6" x 8' 2" (3.19m x 2.49m)

Rear aspect additional reception space for dining table and chairs.

**Kitchen** 10' 5" x 7' 1" (3.18m x 2.16m)

A well appointed kitchen with plenty of floor and wall mounted storage units. Integrated fridge/freezer, electric cooker and hob.

**Lean To** 7' 1" x 5' 10" (2.16m x 1.77m)

uPVC constructed addition, useful garden room - complete with power, counter top and built in storage.

**First Floor Landing**

Loft access. Airing cupboard and immersion tank.

**Bedroom 1** 12' 6" x 8' 2" (3.8m x 2.5m)

A front aspect double bedroom with stunning countryside views. built in double wardrobes.

**Bedroom 2** 9' 6" x 7' 10" (2.9m x 2.4m)

A rear aspect double bedroom with built in wardrobes. Fabulous views across the paddock and hills behind the property.

**Bedroom 3** 9' 1" x 7' 1" (2.78m x 2.15m)

Front aspect bedroom, again with great countryside views.

**Bathroom**

Remodelled to now provide a corner shower cubicle, w/c and vanity basin with storage.

**Outside**

The property enjoys front and rear gardens. At the rear is a low maintenance space with patio - a wonderful place to sit and enjoy the view and neighbouring horses.

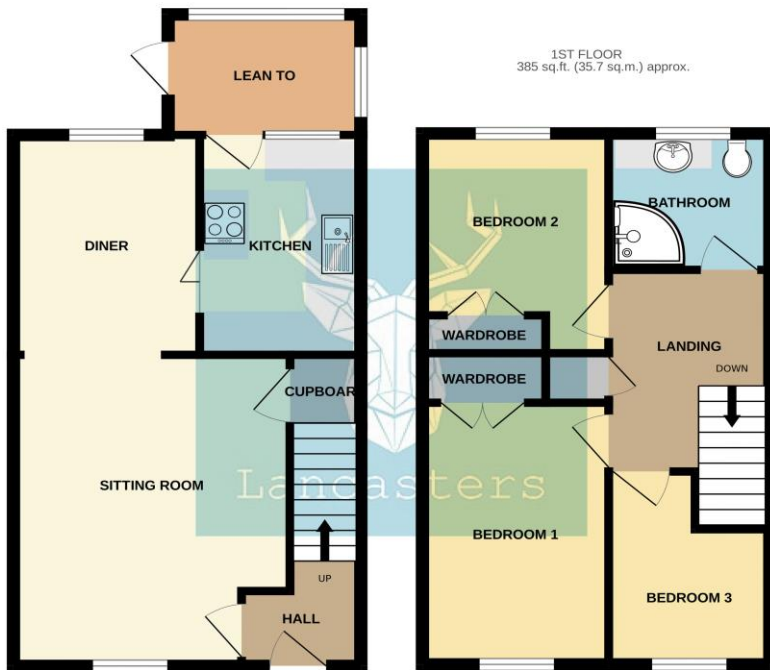
**Parking**

The property has private parking separate to the house across the close. Large enough currently to have a timber shed as well.



GROUND FLOOR  
433 sq.ft. (40.2 sq.m.) approx.

1ST FLOOR  
385 sq.ft. (35.7 sq.m.) approx.



TOTAL FLOOR AREA : 818 sq.ft. (76.0 sq.m.) approx.

Whilst every attempt has been made to ensure the accuracy of the floorplan contained here, measurements of doors, windows, rooms and any other items are approximate and no responsibility is taken for any error, omission or mis-statement. This plan is for illustrative purposes only and should be used as such by any prospective purchaser. The services, systems and appliances shown have not been tested and no guarantee as to their operability or efficiency can be given.

Made with Metropix ©2024

Want more photos and a video? Scan here



Lancasters Estate Agents  
65 High Street | Cowes | Isle of Wight | PO31 7RL  
01983 209020 Homes@Lancasters.org

Tenure:  
Council:  
EPC:

These sales particulars do not form part of any contract. The agent has not undertaken any form of survey on the property and has not checked any services. If you decide to purchase this, or any other property, we advise you undertake your own enquiries via your separately appointed solicitor and surveyor.