



Princess Beatrice Court

Cowes

£200,000



Lancasters

Beautiful 2 Bedroom Garden Apartment with Parking in the heart of town. Ideally suited to a professional single/couple, second homeowners, or retirees. Princess Beatrice Court is an exclusive development of high quality apartments with double glazing, gas central heating, and well insulated throughout.



2 Bedroom Ground Floor Apartment

Courtyard

To the front of the property is an enclosed courtyard area, communally maintained, and giving a sunny spot for sitting out.

Open Plan Living Area 19' 0" x 12' 2" (5.8m x 3.7m)

Double glazed front door into large Living/Dining Room. Open plan to kitchen.

Kitchen Area 8' 1" x 5' 1" (2.46m x 1.56m)

Modern white gloss kitchen. Integrated fridge freezer. Space and plumbing for washing machine.

Bedroom 1 15' 0" x 7' 3" (4.56m x 2.2m)

Double Bedroom with window to the rear.

Bedroom 2 14' 9" x 6' 11" (4.5m x 2.1m)

Twin room with window to the front.

Shower Room

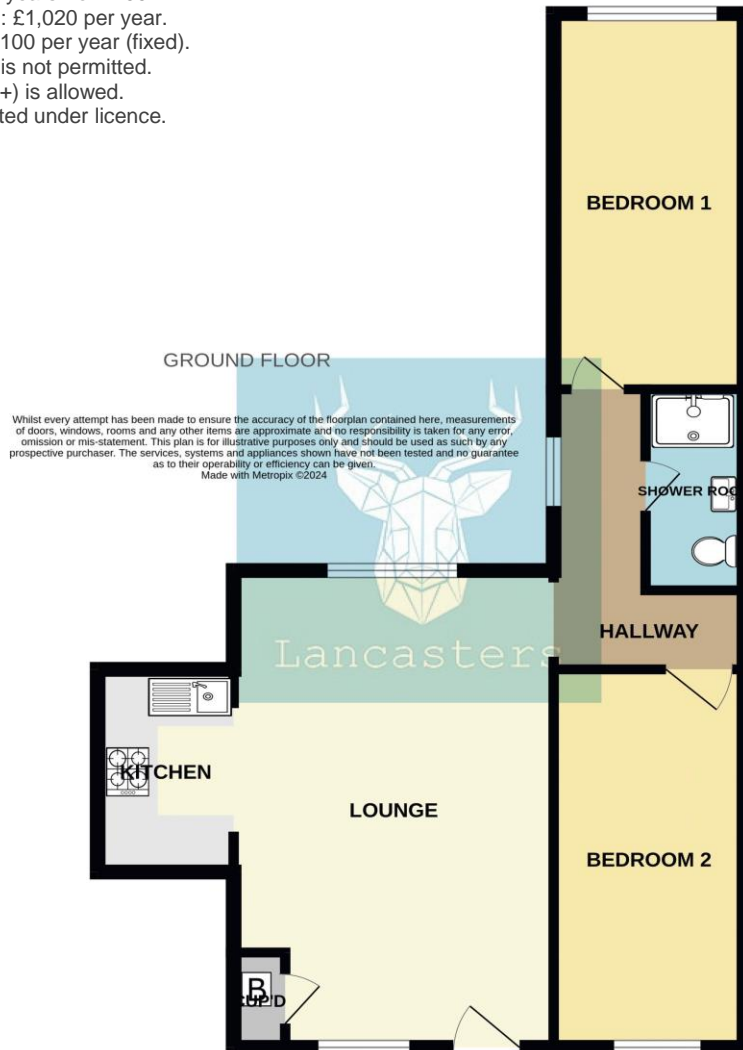
Large shower room with extractor.

Parking

Private allocated parking space within gated and covered carpark.

Tenure

Leasehold: 125 years from 2007.
Service Charge: £1,020 per year.
Ground Rent: £100 per year (fixed).
Holiday Letting is not permitted.
Long Term (6m+) is allowed.
Pets are permitted under licence.



Want more photos and a video? Scan here

Lancasters Estate Agents
65 High Street | Cowes | Isle of Wight | PO31 7RL
01983 209020 Homes@Lancasters.org

Tenure: Leasehold
Council: C
EPC: C



These sales particulars do not form part of any contract. The agent has not undertaken any form of survey on the property and has not checked any services. If you decide to purchase this, or any other property, we advise you undertake your own enquiries via your separately appointed solicitor and surveyor.