



Mill Hill Road
Cowes
£300,000



Lancasters

A large characterful Victorian semi detached villa. In need of some modernisation Massive, but with POTENTIAL - this property offers fabulous accommodation and plenty period features throughout. Offered CHAIN FREE this home would make an excellent family residence or second home by the sea.



3 Bedroom Semi Detached House

Entrance

A traditional storm porch covers a upvc front - which in turns open to a long hall with accommodation off.

Drawing Room 16' 5" x 11' 10" (5.0m x 3.6m) into bay

A large main - front aspect reception, with gas fire.

Sitting Room 15' 4" x 11' 6" (4.67m x 3.5m)

A large rear aspect reception with French style doors out to the rear garden.

Dining Room 12' 2" x 9' 10" (3.7m x 3.0m)

Additional reception off the kitchen - Side aspect.

Kitchen 13' 9" x 9' 6" (4.2m x 2.9m) max

Door out to the side return. Fitted with a basic series of cupboards and integrated steel sink. There is also a door to W/C and Shower.

First Floor

Spacious landing - Access to a boarded loft and velux window - via built in ladder.

Bedroom 1 16' 5" x 15' 1" (5.0m x 4.6m) into bay

A large front aspect double bedroom - with bay window - side door onto a balcony with wooden balustrade.

Bedroom 2 15' 4" x 11' 4" (4.67m x 3.46m)

A large rear aspect double bedroom.

Bedroom 3 11' 10" x 9' 10" (3.6m x 3.0m)

Side aspect bedroom.

Bathroom

Fitted with a part suite to include, panelled bath and basin.

W/C

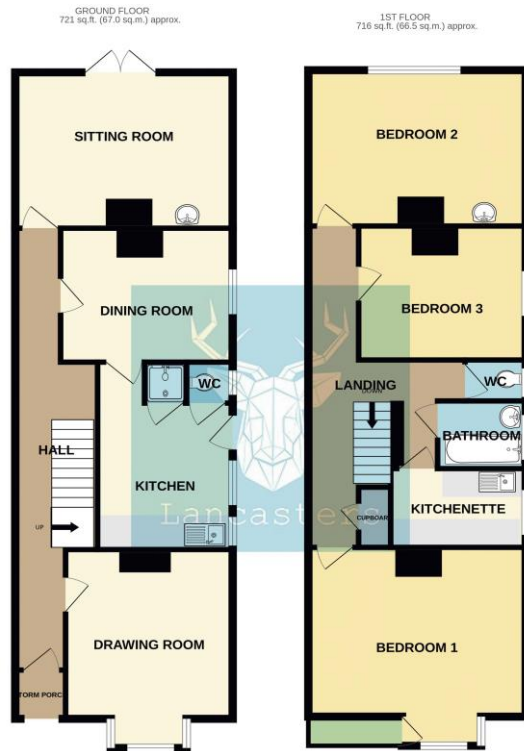
Separate W/C.

Kitchenette 9' 9" x 5' 9" (2.96m x 1.76m)

additional kitchen space on the first floor. Storage and work tops, with integrated steel sink. - Side aspect.

Outside

From the street there are steps up to the front door. walled garden and side access to the rear. The back garden is mainly laid to patio, with fenced and walled boundaries.



GROUND FLOOR
721 sq.ft. (67.0 sq.m.) approx.

1ST FLOOR
716 sq.ft. (66.5 sq.m.) approx.

TOTAL FLOOR AREA - 1437 sq.ft. (133.5 sq.m.) approx.

While every attempt has been made to ensure the accuracy of the floorplan contained here, measurements of doors, windows, rooms and any other items are approximate and no responsibility is taken for any omission or mis-statement. This plan is for illustrative purposes only and should be used as such by any prospective purchaser. The services, systems and appliances shown have not been tested and no guarantee as to their operability or efficiency can be given.
Made with hertogen ©2024

Want more photos and a video? Scan here

Lancasters Estate Agents
65 High Street | Cowes | Isle of Wight | PO31 7RL
01983 209020 Homes@Lancasters.org

Tenure: Freehold
Council: C
EPC: TBC



These sales particulars do not form part of any contract. The agent has not undertaken any form of survey on the property and has not checked any services. If you decide to purchase this, or any other property, we advise you undertake your own enquiries via your separately appointed solicitor and surveyor.