



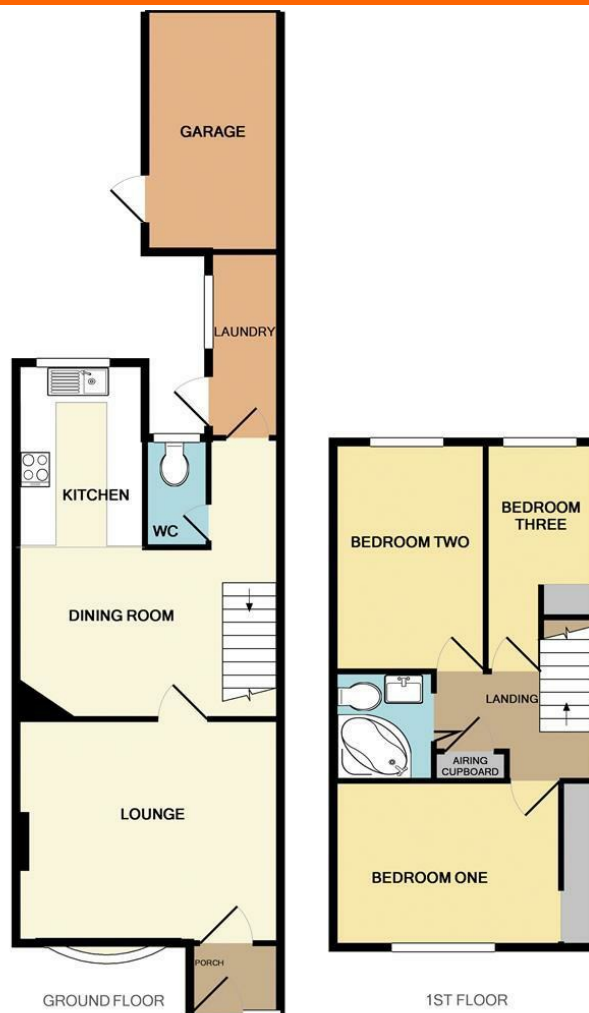
Somerfield Road, Bloxwich

Walsall, West Midlands, WS3 2EG

£650 Per Month

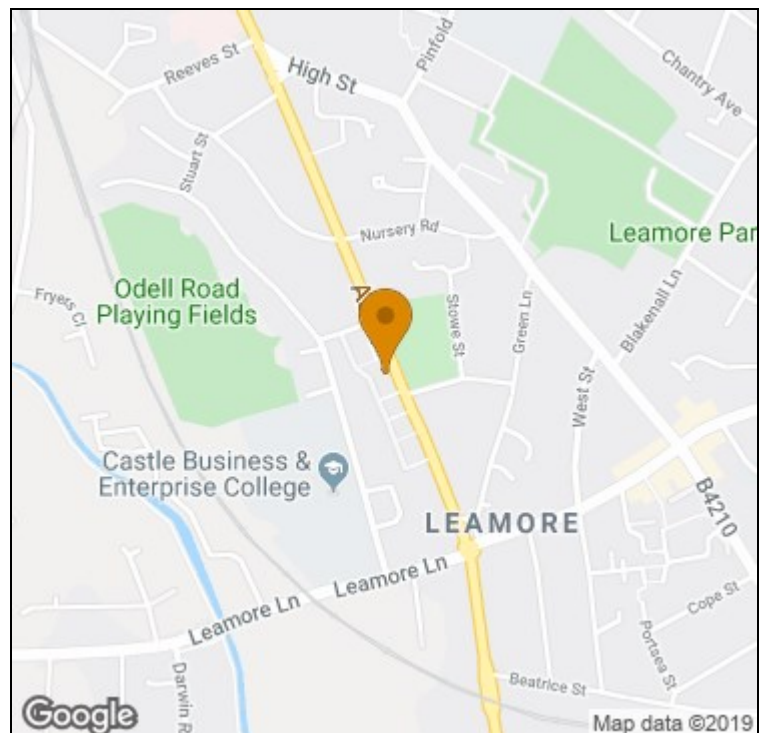
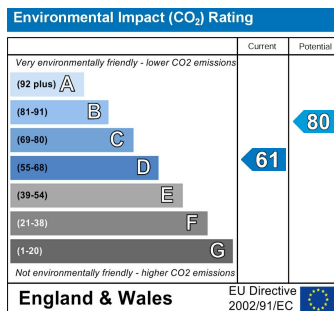
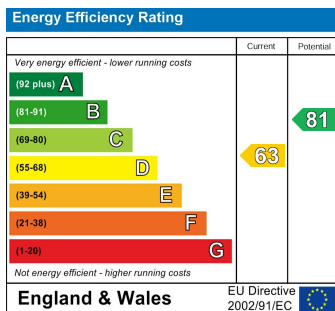


****WITHIN WALKING DISTANCE OF BLOXWICH HIGH STREET**** A Well Presented Mid Terrace in a poplar location close to local amenities and transport links. Spacious family accommodation briefly comprising: Entrance Porch, Lounge, Dining Room, Kitchen, Three Bedrooms, Bathroom, Front & Rear Garden and Garage to Rear. Sorry No Pets or Smokers.



Whilst every attempt has been made to ensure the accuracy of the floor plan contained here, measurements of doors, windows, rooms and any other items are approximate and no responsibility is taken for any error, omission, or mis-statement. This plan is for illustrative purposes only and should be used as such by any prospective purchaser. The services, systems and appliances shown have not been tested and no guarantee as to their operability or efficiency can be given

Made with Metropix ©2018



t: 01922711444 e: bloxwich@goodchilds-uk.com

www.goodchilds-uk.com