



Guide Price
£325,000

Freehold

2x  1x  1x 

**Nightingale Grove,
Basildon, Essex, SS14**

OVER 60?

Secure this property
for up to **59% less!**

 **DOUGLAS
ALLEN**
Helping you move forwards



Main features

- 2 bedroom terraced house
- Driveway parking
- Conservatory
- Ground floor cloakroom
- Close to Basildon town centre and mainline train station

Accommodation

GROUND FLOOR

Entrance Hallway

Lounge: 13'0 x 12'0 (3.97m x 3.66m)

Garden Room : 11'7 x 9'7 (3.53m x 2.92m)

Kitchen: 13'5 x 5'3 (4.09m x 1.60m)

Cloakroom

FIRST FLOOR

Landing

Bedroom 1: 12'9 x 11'4 (3.89m x 3.46m)

Bedroom 2: 12'9 x 10'6 (3.89m x 3.20m)

Bathroom

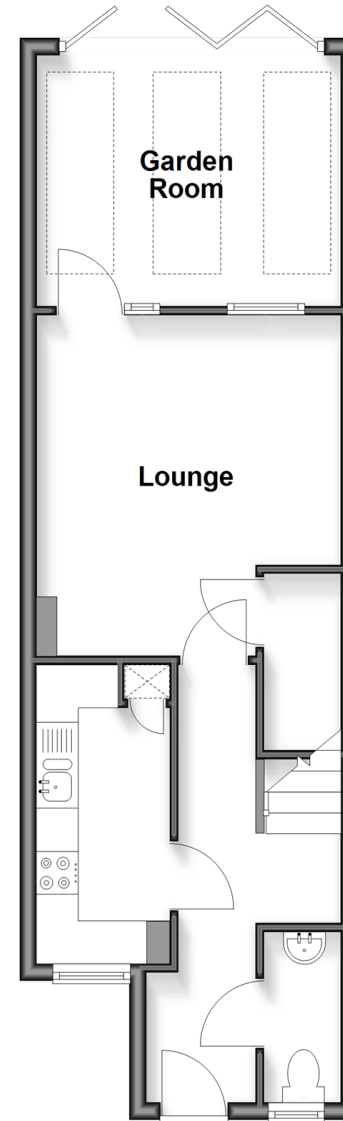
OUTSIDE

Rear Garden

Driveway Parking

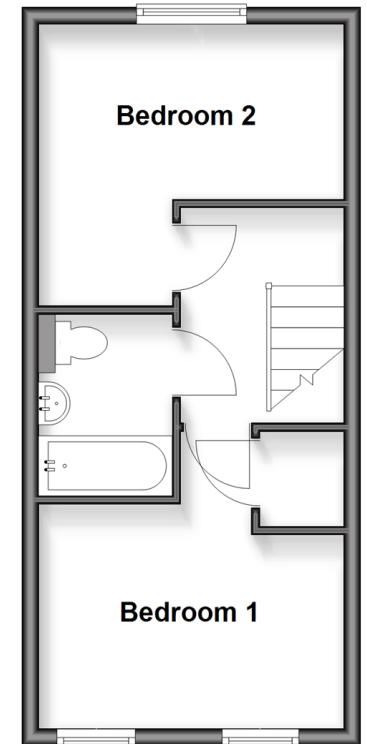
Ground Floor

Approx. 42.6 sq. metres (458.9 sq. feet)



First Floor

Approx. 30.0 sq. metres (323.4 sq. feet)



Call Basildon - 01268 293993 ■ douglasallen.co.uk

- The seller is a person connected with Douglas Allen as defined in the Estate Agents Act 1979
- A private rental licensing scheme applies to some properties in this area, please contact us before proceeding
- Legal advice should be taken to verify fixtures/fittings, planning, alterations and/or lease details
- Appliances & services are untested, dimensions are approximate and floor plans are not to scale
- Through a Homewise Home For Life Plan people aged 60+ can secure this property for up to 50% less, by purchasing a Lifetime Lease.



50509534/20251129/MB/GW