



Guide Price
£190,000

Leasehold

1x  1x  1x 

**Church Mews, Claremont
Road, Basildon, Essex,
SS15**

OVER 60?

Secure this property
for up to **59% less!**

 **DOUGLAS
ALLEN**
Helping you move forwards



Main features

- Garage and allocated parking space
- Well maintained throughout
- Balcony space
- Located on a private road offering peace and privacy
- Close to local amenities

Accommodation

FIRST FLOOR

Hall

Kitchen: 9'8 x 8'6 (2.95m x 2.59m)

Living Room: 13'4 x 11'5 (4.07m x 3.48m)

Bedroom: 13'3 x 8'8 (4.04m x 2.64m)

Shower Room

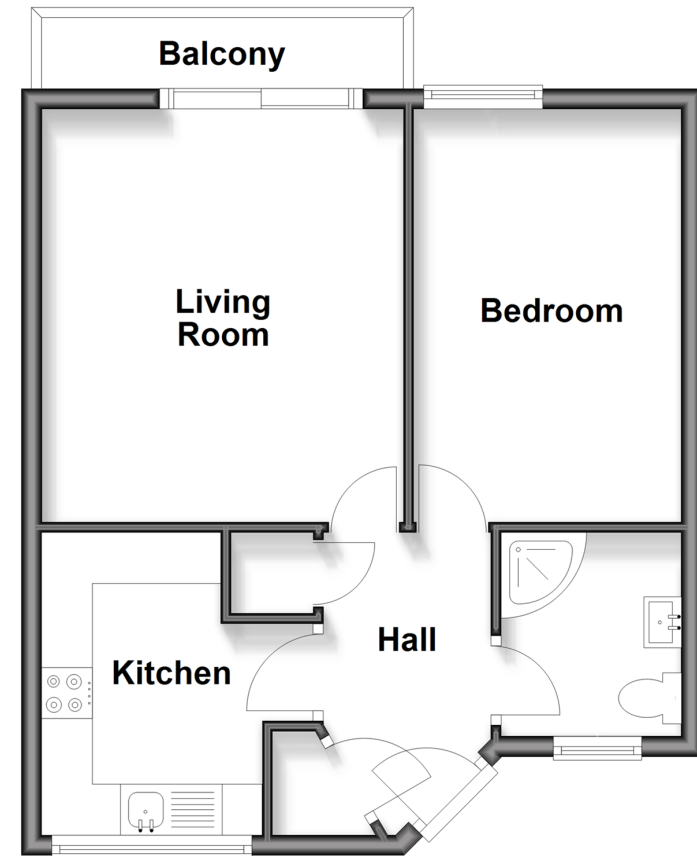
OUTSIDE

Allocated Parking Space

Garage

First Floor

Approx. 42.6 sq. metres (458.3 sq. feet)



Call Basildon - 01268 293993 ■ douglasallen.co.uk

- A private rental licensing scheme applies to some properties in this area, please contact us before proceeding
- Legal advice should be taken to verify fixtures/fittings, planning, alterations and/or lease details
- Appliances & services are untested, dimensions are approximate and floor plans are not to scale
- Through a Homewise Home For Life Plan people aged 60+ can secure this property for up to 50% less, by purchasing a Lifetime Lease.

