



**Guide Price**  
**£350,000**

**Freehold**

3x  1x  2x 

**Broomfields Mews,  
Basildon, Essex, SS13**

**OVER 60?**

Secure this property  
for up to **59% less!**

 **DOUGLAS  
ALLEN**  
Helping you move forwards





## Main features

- Close to transport links and local amenities
- In catchment area for local desirable schools
- Extended and recently renovated
- Open plan living area
- Quiet location within walking distance to station
- Ground floor cloakroom
- Solar panels and storage battery

## Accommodation

### GROUND FLOOR

Entrance Hallway  
Lounge: 17'7 x 13'7 (5.36m x 4.14m)  
Dining Area: 11'8 x 11'3 (3.56m x 3.43m)  
Kitchen: 11'8 x 10'1 (3.56m x 3.08m)  
Cloakroom

### FIRST FLOOR

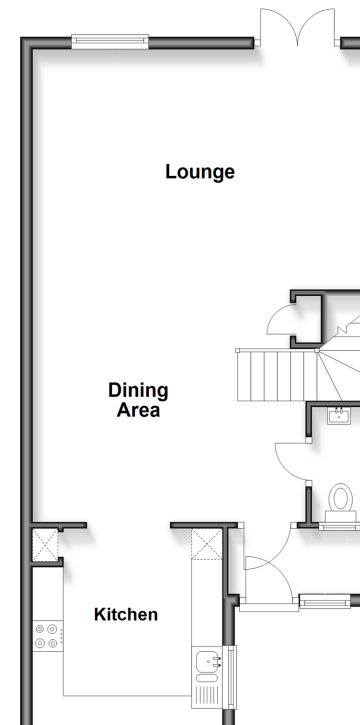
Landing  
Bedroom 1: 13'1 x 9'2 (3.99m x 2.80m)  
Bedroom 2: 13'8 x 8'3 (4.17m x 2.52m)  
Bedroom 3: 12'8 x 8'6 (3.86m x 2.59m)  
Bathroom

### OUTSIDE

Rear Garden  
Front Garden

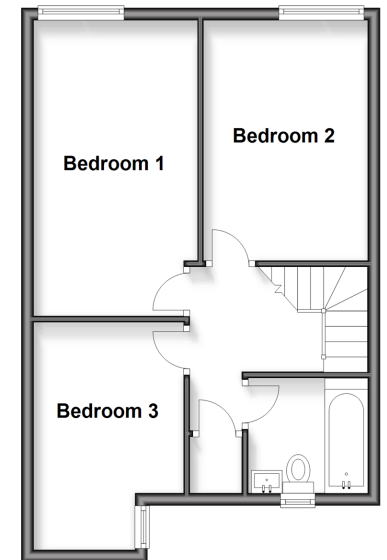
### Ground Floor

Approx. 54.4 sq. metres (586.0 sq. feet)



### First Floor

Approx. 43.0 sq. metres (463.1 sq. feet)



**Call Basildon - 01268 293993 ■ [douglasallen.co.uk](http://douglasallen.co.uk)**

- A private rental licensing scheme applies to some properties in this area, please contact us before proceeding
- Appliances & services are untested, dimensions are approximate and floor plans are not to scale

- Legal advice should be taken to verify fixtures/fittings, planning, alterations and/or lease details
- Through a Homewise Home For Life Plan people aged 60+ can secure this property for up to 50% less, by purchasing a Lifetime Lease.