



OVER 60?

Secure this property
for up to **59% less!**

Price

£325,000

Freehold

3x  1x  1x 

**Cleveland Road,
Basildon, Essex, SS14**



**DOUGLAS
ALLEN**

Helping you move forwards



Main features

- Open plan living
- Front and rear gardens
- Walking distance to town centre and station
- Close to transport links and local amenities
- In catchment area for local desirable schools

Accommodation

GROUND FLOOR

Entrance Hallway
Lounge/Diner: 26'2 x 15'9 (7.98m x 4.80m)
Kitchen: 9'9 x 9'0 (2.97m x 2.75m)
Cloakroom

FIRST FLOOR

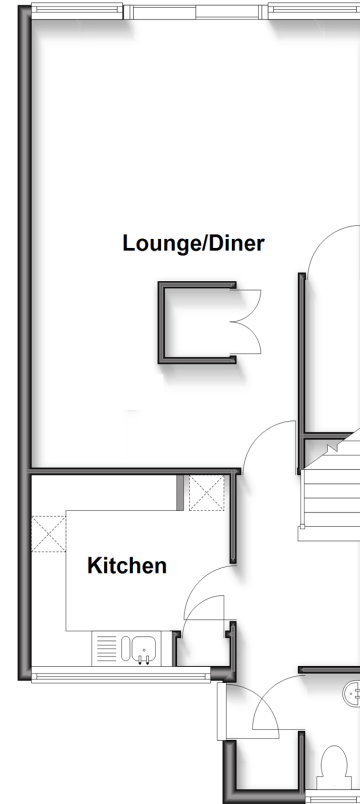
Landing
Bedroom 1: 8'8 x 7'5 (2.64m x 2.26m)
Bedroom 2: 15'1 x 10'3 (4.60m x 3.13m)
Bedroom 3: 13'7 x 9'4 (4.14m x 2.85m)
Bathroom

OUTSIDE

Front Garden
Rear Garden

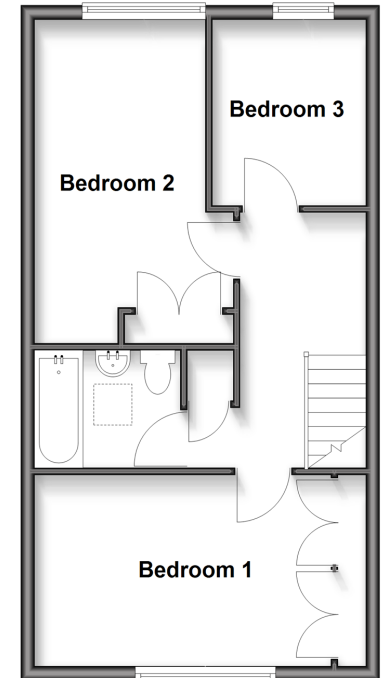
Ground Floor

Approx. 46.9 sq. metres (504.5 sq. feet)



First Floor

Approx. 43.5 sq. metres (468.4 sq. feet)



Call Basildon - 01268 293993 ■ douglasallen.co.uk

- Legal advice should be taken to verify fixtures/fittings, planning, alterations and/or lease details
- Appliances & services are untested, dimensions are approximate and floor plans are not to scale
- Through a Homewise Home For Life Plan people aged 60+ can secure this property for up to 59% less, by purchasing a Lifetime Lease.



50509245/20250426/MB/AA