



**Price**  
**£170,000**

**Leasehold**

1x  1x  1x 

**Brundish, Basildon,  
Essex, SS13**





## Main features

- Ground floor maisonette
- Private secluded garden
- Close to transport links and amenities
- In catchment area for local desirable schools
- Perfect for first time buyers

## Accommodation

### GROUND FLOOR

Entrance Hallway

Lounge/Diner: 16'9 x 10'6 (5.11m x 3.20m)

Kitchen: 7'4 x 5'9 (2.24m x 1.75m)

Bathroom: 11'2 x 7'4 (3.41m x 2.24m)

Bedroom : 11'4 x 11'0 (3.46m x 3.36m)

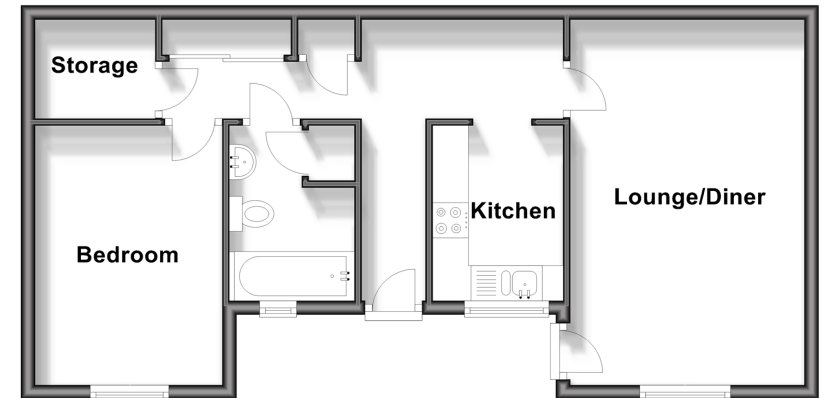
### OUTSIDE

Rear Garden

Front Garden

### Ground Floor

Approx. 50.2 sq. metres (540.3 sq. feet)



**Call Basildon - 01268 293993 ■ [douglasallen.co.uk](http://douglasallen.co.uk)**

- Legal advice should be taken to verify fixtures/fittings, planning, alterations and/or lease details
- Appliances & services are untested, dimensions are approximate and floor plans are not to scale



50509282/20250419/PM/AA