



**Modern  
Auction**

**£120,000  
Leasehold**

2x  1x  1x 

**Fairfax Avenue,  
Basildon, Essex, SS13**





## Main features

- Ideal first time purchase or buy to let investment
- 2 bedroom first floor flat being offered with no onward chain
- For Sale by Modern Auction - T&C's apply
- Subject to an undisclosed Reserve Price, Buyer's fees apply

## Accommodation

### FIRST FLOOR

Entrance

Hallway

Kitchen: 10'0 x 9'5 (3.05m x 2.87m)

Lounge/Dining Area: 12'8 x 10'6 (3.86m x 3.20m)

Bedroom 1: 9'5 x 8'5 (2.87m x 2.57m)

Bedroom 2: 9'5 x 6'3 (2.87m x 1.91m)

Bathroom

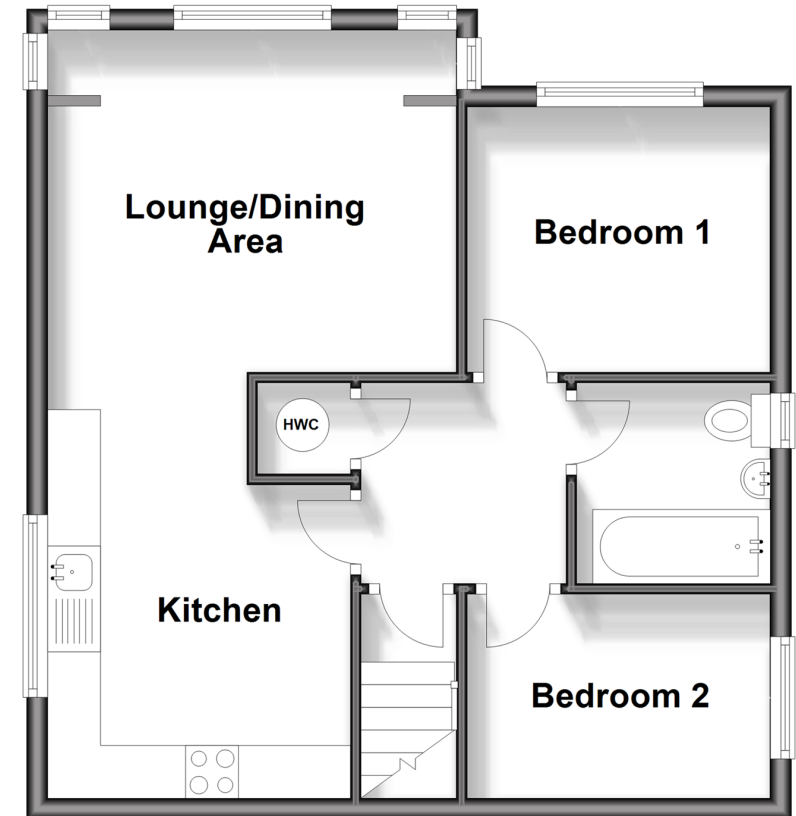
### OUTSIDE

Communal Garden

Communal Parking

## First Floor

Approx. 47.5 sq. metres (510.8 sq. feet)



**Call Basildon - 01268 293993 ■ [douglasallen.co.uk](http://douglasallen.co.uk)**

- Legal advice should be taken to verify fixtures/fittings, planning, alterations and/or lease details
- Appliances & services are untested, dimensions are approximate and floor plans are not to scale



50508918/20250403/RW/GW