



Guide Price
£360,000

Freehold

3x  1x  2x 

**Takely End, Basildon,
Essex, SS16**

OVER 60?

Secure this property
for up to **59% less!**

 **DOUGLAS
ALLEN**
Helping you move forwards



Main features

- **Very well presented 3 bedroom terraced house**
- **Located in the sought after area of Kingswood**
- **Permit parking**
- **Short walk to Basildon mainline station and town centre**
- **Outbuilding to the rear of the garden with power and light**

Accommodation

GROUND FLOOR

Entrance Hallway

Lounge: 17'1 x 11'3 (5.21m x 3.43m)

Kitchen/Dining Room : 14'5 x 11'9 (4.40m x 3.58m)

Utility Room : 7'1 x 4'1 (2.16m x 1.25m)

Store Room

FIRST FLOOR

Landing

Bedroom 1: 12'7 x 11'8 (3.84m x 3.56m)

Bedroom 2: 12'7 x 8'8 (3.84m x 2.64m)

Bedroom 3: 12'7 x 10'5 (3.84m x 3.18m)

Bathroom

OUTSIDE

Rear Garden

Front Garden

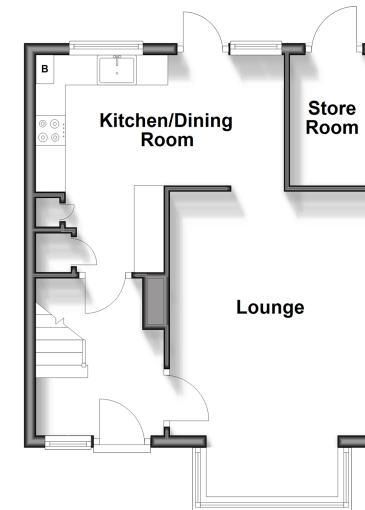
Out building

Permit Parking

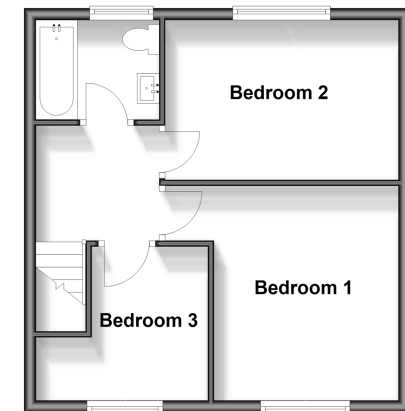
Call Basildon - 01268 293993 ■ douglasallen.co.uk

- Legal advice should be taken to verify fixtures/fittings, planning, alterations and/or lease details
- Appliances & services are untested, dimensions are approximate and floor plans are not to scale
- Through a Homewise Home For Life Plan people aged 60+ can secure this property for up to 59% less, by purchasing a Lifetime Lease.

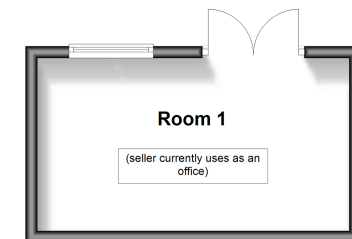
Ground Floor
Approx. 37.5 sq. metres (403.3 sq. feet)



First Floor
Approx. 38.8 sq. metres (418.1 sq. feet)



Outbuilding
Approx. 15.2 sq. metres (163.7 sq. feet)



50508500/20250412/MB/GW